

# EASEBOURNE

## Magazine

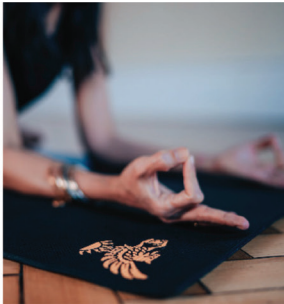
July/August Vol 22 No.2



Now on  
Instagram  
[@easebourne  
magazine](https://www.instagram.com/easebourne_magazine)

The Community Magazine for the Easebourne Parish

£1.00



## COWDRAY WELLBEING

Wellbeing is an important part of the Estate's ethos. Cowdray Hall and Therapy Rooms provide a focal point for self-development, a place where you can come to step aside from the challenges of daily life. Cowdray Hall offers a broad variety of emotional and spiritual workshops, retreats, events and weekly classes.

The tranquil Therapy Rooms sit alongside the Hall and are used by a range of practitioners creating a centre of dedicated therapies including osteopathy, nutrition and acupuncture.

t: 01730 812423

Cowdray Hall Email: [hall@cowdray.co.uk](mailto:hall@cowdray.co.uk) Therapy Rooms Email: [therapy-rooms@cowdray.co.uk](mailto:therapy-rooms@cowdray.co.uk)

[www.cowdray.co.uk/wellbeing](http://www.cowdray.co.uk/wellbeing)

---

# Rusty, but Ready!

**I've been editing and designing magazines since I was at school and so, it was a natural progression for me to move into the publishing world after I qualified in graphic design at Leeds University.**

In my thirty year career I worked mainly on business to business magazines, but finally hung up my keyboard in 2012 to change direction and become a writer.

Little did I know that, more than a decade later I'd be back, rusty but ready, to give it another go. I found the idea of the village magazine 'folding' very difficult to countenance so I stepped in, but I repeatedly said that if anyone else came along they really could take my place.

Yet, here I am. With the support of Derek, our lovely vicar, I am proposing to take the magazine forward, giving it a new design, new content and linking it to Instagram.

Please bear with me whilst I learn about you, the parish and the local area.

As for me, I moved into Midhurst during times of Covid and the first two years here felt very isolated, but I'm making up it for it now!



However, I am still feeling very new to the area and when people mention villages and 'well-known' pubs I can look a bit bemused.

All help is welcome so please do introduce yourselves to me if you see me out and about, let me know what you are doing and make me aware of your events and special occasions. I love beautiful photographs and I'd like to fill our instagram page (@easebournemagazine) with the delights of Easebourne.

I'm very approachable (most of the time) and if you get me talking about art, books, jazz, Liverpool Football Club or horses you'll have a friend for life.

■ [easebourneditor@btinternet.com](mailto:easebourneditor@btinternet.com)

Thank you  
Gavin and Tina



**Putting together a magazine takes skill, time, patience, ingenuity and a very diplomatic frame of mind. There is so much to organise, collate, check, double check and chase up. This Gavin and Tina Litchfield have done with great skill and unwavering determination.**

Curate, Liz Yonge says: 'It's easy to underestimate how much time and sheer dedication Gavin and Tina put into the magazine. They have been incredibly proactive and we should all be very grateful for their hardwork.'

However, after eight long years of working on United Easebourne they have decided to step down from their roles as magazine editor, designer and advertising manager and enjoy some long deserved extra time to pursue their long list of hobbies. As a couple Tina and Gavin have many interests and one thing is certain, their time will be well spent. Everyone wishes them the very best.

## Moving Forward

Looking to the future, the magazine needs support from the community to continue and, in particular, we need two roles filled by new team members.

Firstly, a **Subscriptions Manager**, someone who can take enquiries, send out our bank details and maintain a database of subscribers. It would be no more than an hour a month for someone who is computer literate, but absolutely vital for the magazine's survival.

Secondly, we need a **Proof-reader** with a sharp eye! Ideally, you'd be someone who knows the area well and can spot a misspelt village name in a trice.

If you can help please do get in touch. You will be part of a small, but vital, community team.

● Jan Harvey

■ [easebourneditor@btinternet.com](mailto:easebourneditor@btinternet.com)



## The New Look Easebourne Community Magazine....

- Local News and Information
- Bringing the Community Together
- Promoting our Small Businesses

@easebournemagazine

## Moving Forward....

**Now on sale at Easebourne Village Store**

# Madhurst

## Needing To Be Madder Than Ever This Year

By Phillippa Frankland

### **MADhurst stands for the Music, Arts and Drama Festival in Midhurst.**

The aims of the founding members were to promote and celebrate music, arts and drama and the local community.



This year the committee is looking forward to bringing a wonderful range of music from opera to pop with a Classical Opera Tenor Duo, Folk Music with Anna Tabbush, All That Malarkey with the unique combination of music and comedy, Boogie Bumpers will get our feet tapping and dancing to jazz, swing and jive numbers and the festival rounds off with Mainly Madness a Madness and Ska Tribute band.

For drama we have two forty minute Shakespeare plays with 440 Theatre and Murder Mystery with Midhurst Players. Epic Comedy will entertain us with a selection of great comedians from the comedy club circuit and Dawn Gracie is returning with her fabulous Burlesque Cabaret show.

Over the years the festival has grown and includes events organised by the MADhurst committee, but also promotes any music, arts, drama and community events put on by local organisations and venues around Midhurst and the surrounding area.

We also promote and share details of events that may be on throughout the year, but the specific MADhurst Festival is for the whole month of August.

There are a selection of different art classes available and everyone will be able to enjoy a stroll around town and view the talent of amazing local artists as part of The Art Trail.

There are also guided walks around historic Midhurst, the beautiful South Downs National Park and this year a special walk and talk by Phil Stringer as part of the Commonwealth War Graves Commission. We also have an Insect Discovery Day

with the South Pond Group. Langhams is delighting us with two events this year - the ever popular Live at Langhams and a Dog event in associations with Canine Partners.

MADhurst is a not-for-profit organisation and some of the money raised is used to fund the festival for the following year. Any additional funds available are used to support local organisations and charities. After a very successful year in 2022 we were able to give donations to: The



Food Bank, Rother Valley Together, Tandem, The Green Volunteers, Community Vox, St Mary's Church Easebourne Spire Appeal, Bep-ton Parish Council, South Downs National Trust ReNature Project and Easebourne Park.

For full details of what is available in this year's MADhurst please check our website

■ [madhurst.co.uk](https://madhurst.co.uk)

**“MADhurst really is Midhurst's month long pop-up arts centre! It brings in great acts from outside the area but, most importantly, it's also a wonderful opportunity for the many outstanding artists, musicians, dancers and actors who live in and around Midhurst to be seen by a wider audience. This year MADhurst is more important than ever as its popularity draws people back into Midhurst and, after the road closure, that's vital for all the businesses in the town.”**

**Julia, HOOLI Design**

**#loveMidhurst**  
**#loveMADhurst**  
**#talktoHOOLI.**

Get in touch with Julia and Rachel:

HOOLI. Design | Marketing | Words | Web

01730 816484 | [hello@hooli.co.uk](mailto:hello@hooli.co.uk) | [hooli.co.uk](https://hooli.co.uk) | @

Nº1 West Street, Midhurst, West Sussex GU29 9NF

# What's On

## RHS

### Flower Show Tatton Park

Apart from the beautiful gardens and gorgeous blooms on display there will be a wide variety of talks and demonstrations this year. There will be gardening, floral and culinary advice from a range of experts together with dedicated workshops and demonstrations.

**19 – 23 July 2023**

**Wednesday - Sunday**



## Old Skool Ibiza Night

### 90's and 00's Classic House

Mark Hobbs and Simon Horn DJ:

Dance the night away.

**22 July 2023, 5.30pm – 11.00pm**

**Lawns Polo Grounds**

■ [cowdraypolo.co.uk/ibiza-night](http://cowdraypolo.co.uk/ibiza-night)

## Summer Concert

### Midhurst Community Choir

Come and hear a wide variety of well-loved songs from classical pieces to musical theatre, performed by Midhurst's own community choir. Always a wonderful night out.

**29 July 2023**

**SDNPA Memorial Hall, North Street, Midhurst**

**Doors open 7.00pm**

**Admission £12/£6 under six**



**Send your events to:**

■ [easebourneditor@btinternet.com](mailto:easebourneditor@btinternet.com)

**MERRITT'S** *OF* **MIDHURST**  
FUNERAL SERVICE LTD.

## Small, Independent bespoke Funeral Directors Thoughtful, Gentle and Professional

- Funerals tailored to suit every family's requirements
  - Various vehicle options available
  - 24 hour service

01730 816245 - 07704 530921

**[Enquiries@merrittsofmidhurst.co.uk](mailto:Enquiries@merrittsofmidhurst.co.uk)**

**Weald and Downland Living  
Museum  
Family Workshop  
Clay Green Man or  
Lady of the Woods**

Looking for something different to do during the summer holiday? This fun family workshop will teach you how to bring clay to life by sculpting a face and making beautiful leaves by impressing foliage into clay. Your piece can be airdried at home or fired.

**4 August 2023**

**10:00am–1:00pm**

£65 (including kiln firing), or £55 (not including kiln firing) per pair/adult and child combination to include tuition and refreshments.

[www.wealddown.co.uk](http://www.wealddown.co.uk)



**Petworth Late: The House of Art and JMW Turner**

Experience a magical evening atmosphere of art and culture at the National Trust's Petworth House during this late opening. The highlight talks this evening will be themed on JMW Turner, a frequent visitor to Petworth.

**Friday 7 July,  
6.30pm–8.30pm,  
£15**

[www.nationaltrust.org.uk](http://www.nationaltrust.org.uk)



**Archaeology in the Park Guided Walk**

From medieval farmsteads and a Tudor hunting lodge to World War II remnants, learn about some of the archaeological findings the team at Petworth have uncovered.

**Wednesday 26 July, 10.30am–12.30pm**

**Friday 28 July 2.30pm–4.30pm**

**Saturday 29 July 10.30am–12.30pm**

# Out and About



**Award-winning  
chocolates handcrafted  
in Easebourne**

Available for collection from our village studio. Order online or request a shopping appointment. Exclusive chocolate masterclasses also now available.

[www.nobleandstace.co.uk](http://www.nobleandstace.co.uk)

**07779 880 459**

Formerly on sale in Cowdray, now exclusively from us.



# From Small Acorns...



Two ladies looking to grow a business in the forest tell Jan Harvey all about their plans

**Forest schools have become very popular in recent years because they offer children the opportunity to explore, learn and play in a natural environment.**

The idea came from Denmark, where skovbørnehave, “forest kindergarten” has been part of life for school children since the eighties.

Both Lucy Wall-Palmer and Megan Davis have trained as Forest School leaders and decided that the time was right to start a new project using Lucy’s eight acre small holding in Elsted Marsh.

‘I have the perfect venue and the qualifications, so now the time is right to create something that will provide an outdoor space for children and their families to learn, be creative and push personal bound-

aries. There is nothing like watching people build a den or make a bug house, but it can also be as simple as sitting on a log listening to a woodland story.’

## Adults Too

The new business is called Forest Frith. The word Frith means hospitality, peace and freedom and the ladies are not just looking to cater for children. Megan, a former nurse, is keen to branch out to help adults too.

‘Midhurst means “middle of the forest”’ she told me, ‘and we live in such a beautiful environment, a rich, living resource. We are so lucky, we need to be delving deeper into the forest not just whizzing through it on the A272.’ Megan worked for many years in Easebourne as a lymphatic drainage therapist and she still treats many clients in the village.

'It was my work treating people recovering from cancer that led me to think about how nature can heal, the power of fresh air and space to think,' she tells me. 'There are many ways forest activities can benefit people, whether it is helping to coppice hazel or sitting round a camp-fire cooking food and having a relaxed conversation. We are open to all ideas and have the facilities to make it happen.'

Lucy is also keen to work with people who have been bereaved, but also those who are having to face bereavement.

'From my own experience, I know how hard it is to deal with someone who has a life limiting illness and there is so little support out there, resources have never been more stretched. It would be lovely to offer a forest space for those who might need time away from the daily challenges of life to prepare them-

selves to cope with what is to come.'

The idea of Forest Frith is that it can be flexible, creative or caring, adventurous or laid back. It will develop organically and one day will become a place of hospitality, peace and freedom, in the very heart of the South Downs.

**For more information contact**

■ [Lucy@forest-frith.com](mailto:Lucy@forest-frith.com)

■ [Megan@forest-frith.com](mailto:Megan@forest-frith.com)

*Learning  
how to  
whittle  
wood at  
Forest  
Frith*



## BESPOKE CARPENTRY & JOINERY

FITTED OR FREESTANDING CABINETRY, FURNITURE,  
WARDROBES, BOOKCASES, HOME OFFICES,  
SHELVING & DRAWERS

RENOVATION & STORAGE SOLUTIONS

CALL ED FOR A FREE QUOTE OR DESIGN  
CONSULTATION

Instagram [stanton\\_and\\_willis](https://www.instagram.com/stanton_and_willis)

Facebook [Stanton & Willis](https://www.facebook.com/stanton.and.willis)

Email [edywillis@hotmail.com](mailto:edywillis@hotmail.com)

Phone 07775 764354

LOCAL BUSINESS - REFERENCES AVAILABLE



# Food Bank Update

**Midhurst Foodbank only works because it is made up of a wonderful team of volunteers. We respond to those in need of food parcels by working together.**

A team of volunteers collect food twice a week from donation points around the town. This is brought to our warehouse where it is weighed by a different team and sorted before being stored on the shelves. All food dates have to be checked and then it sorted into categories to enable easy accessibility.

Each week, a volunteer mans the phone as well as monitoring the computer for vouchers raised request-ing food deliveries. Each request is

processed by them and passed on to a packing team who put together what is needed ready for the next team of volunteers. A two man team will then collect the food from the warehouse and deliver it to the door of the person in need. It is a massive team effort.

During the school holidays we shall, once again, be sending out holiday lunch packs to children in low income households. This is an extensive operation, involving at least sixty volunteers, but every family in need of support will receive their food parcel because of an amazing group of volunteers.

**If you would like to become one of our team of volunteers email:**

■ [midhurstcoordinator@chichesterdistrict.foodbank.org.uk](mailto:midhurstcoordinator@chichesterdistrict.foodbank.org.uk)

## RYARSH CARS

**Good quality used cars  
at really great prices**

**All cars mechanically  
checked and tested  
Full warranty on all cars  
Excellent personal  
'no nonsense' service**

**Browse our online database  
of cars or visit our showroom  
on the A286 in Easebourne**

**[sales@ryarshcars.co.uk](mailto:sales@ryarshcars.co.uk)  
[www.ryarshcars.co.uk](http://www.ryarshcars.co.uk)**

**Dodsley Lane, Easebourne,  
Midhurst GU29 9BB  
T: 01730 813790**

## SMART CARS

(OF GRAFFHAM)

**PRIVATE HIRE/TAXI SERVICE**

**Executive Saloon and Six Seater Cars  
Chauffeur Service**

**Professional, Personal and Reliable  
Accounts and Corporate  
Business Welcome**

**Airport, Docks and London Runs Same  
Day Courier Parcel Service**

**"Any Time ♦ Any Place ♦ Anywhere"**

**For quotes and bookings call Dominic:**

**0800 4488030 or 07823559099**

**email: [smartcars@tiscali.co.uk](mailto:smartcars@tiscali.co.uk)**

# Friends of Easebourne Parish

As nesting birds have curtailed hedge trimming, FrEP have been concentrating on other areas requiring attention.

This month we have continued with litter-picking and in addition we have cleared footpaths, maintained fruit trees in 'Carbon Corner' and strimmed around the village planters.

## Increasing need

There is an ever-increasing need for volunteers to carry out the tasks we perform due to stretched Council budgets so please consider joining us to help with this work.

The more volunteers the greater the difference we will make to the fabric of our Parish. You will be surprised how much a small work party can achieve.

**Frank Davies**

■ [FRPESec@btinternet.com](mailto:FRPESec@btinternet.com)



**While we have all the equipment we require we do need more volunteers.**

**If you would like to help  
please email:**

**[FRPESec@btinternet.com](mailto:FRPESec@btinternet.com)**



## MOLE CATCHING

"NO MOLE, NO FEE"

## WASPS / HORNETS

CONTACT ANGUS ON 07828 134086

[WWW.ASCOUNTRYSIDESERVICES.CO.UK](http://WWW.ASCOUNTRYSIDESERVICES.CO.UK)



THE BRITISH MOLE  
CATCHERS REGISTER  
SUPPORTING TRADITIONAL EXPERTISE AND SKILLS



Easebourne Primary School

# Summer Fair

Epic Magic Show + Live  
Music and Dancing

Saturday  
15th July  
12:00-  
3pm

PLUS

BBQ, Bar, Games, Stalls,  
Inflatables,  
Pole Joust, Archery, Raffles and  
Tombola's Galore!

Plus a dog show that Easebourne  
Primary School pupils can enter in  
advance of the event.

**Midhurst Community Hub is a one-stop-shop advice centre based in the Library of the Grange Community Centre to provide help to people with complex problems.**

Unfortunately, in recent years virtually all the face-to-face local authority services have been withdrawn from this rural part of West Sussex and so people in need are obliged to travel further afield.

The Chair of Trustees of the Hub, Chrissie Abbott said that: 'We held a first ever Midhurst Community Forum in May bringing together people serving the Midhurst area from local authorities, the health sector, schools, and voluntary sector organisations, We were very pleased to have welcomed over fifty guests to discuss local issues from thirty different organisations.'

## Enabling Independence Building Community

The Hub fills this gap. Like a bicycle wheel, the "spokes" of the Hub engage with other organisations to whom, and from whom referrals of clients are made. With these wide-ranging links a 'joined-up' service can be provided.

Since its launch at the end of last year the Hub has already assisted over forty clients. It's value derives from every person who has been assisted with issues about debt, benefits, deterioration in social housing, eviction, problems linked to social care and, for older people, health-care, wellbeing and loneliness.

The Hub is a first port of call for clients, for whom it then acts as an advocate in securing detailed help from specialists, or in pursuing an issue on behalf of a client.

Some of the key issues that arose



at the Forum, aside from the impact of the closure of North Street in Midhurst, were:

- ◆ Loneliness of older people and the isolation of younger people
- ◆ Lack of communication and awareness of what services are available locally
- ◆ Lack of affordable housing and access to higher paid jobs
- ◆ Transport and access difficulties
- ◆ Poor services for carers, the disabled and those with mental health problems

Anyone interested in knowing more should contact the Hub at:

■ 01730 770403

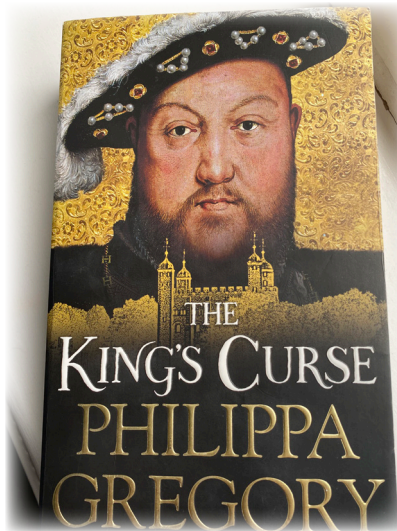
■ [info@midhurstcommunityhub.co.uk](mailto:info@midhurstcommunityhub.co.uk)

# BOOK CLUB

There is nothing quite like a book that deeply immerses the reader into a particular era in history and I know I can always rely on author, Philippa Gregory, to whisk me off to Tudor England and the court of Henry the Eighth. She has the ability to give life and colour to characters who live long in the memory and one of my personal favourites appears in her 2014 novel, *'The King's Curse.'*

Lady Margaret Pole is the heir to the Plantagenets and a rival claimant to the throne. However, she is trusted by the King and becomes the guardian of his son, Prince Arthur and his young bride, Katherine of Aragon.

The twists and turns of Margaret's life see her rise to become the confidante of the King, until on his whim she is cast aside. Her life is complicated, intense, heart-breaking and triumphant and her story deeply moving.

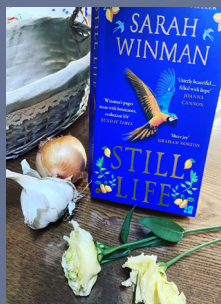


No spoilers here, but the final chapters bring her to Cowdray House which come to life under Gregory's practised hand. It is a book that I highly recommend with the bonus that you can take a walk from Easebourne to visit one of the settings.

● Jan Harvey

Do you have books that feature the local area to recommend? Send your suggestions to [easebourneeditor@btinternet.com](mailto:easebourneeditor@btinternet.com)

## TWO SUMMER BOOKS



**STILL LIFE**  
Sarah Winman

A heart-warming book of deep love, mutual respect and pure happiness. Set in Florence, once read, never forgotten



**LIMONI**  
Genaro Cantaldo

Perfect summer recipes from the Italian master chef. When life gives you lemons buy this book, every recipe requires them.

1 How many minutes are there in a full week?

2 What country drinks the most coffee per capita?

3 What is the 4th letter of the Greek alphabet?

4 Name the fermented milk drink that originated in the Caucasus region and is now popular in many countries around the world?

5 Which insects are called 'one-day insects' because of their short life span?

6 Which animal is the symbol of Italian sports car manufacturer Ferrari?

7 What is the title of the memoir by Prince Harry which was published in January this year?

8 Which fruit is often referred to as the 'Alligator Pear'?

9 The motto of which organisation is 'Blood and Fire'?

10 Ribbon, Harp, Elephant and Leopard are all types of what animal?

11 In which English county is the television drama series 'Doc Martin' set?

12 Electric power is typically measured in what units?

13 What was William Wilberforce influential in ending?

14 What art form is described as 'decorative hand-writing or hand-written lettering'?

15 Aureolin is a shade of what colour?

16 In what country would you find Mount Kilimanjaro?

17 Which is the only body part that is fully grown from birth?

18 Which celebration of arts and culture takes place over three weeks from 4 - 28 August 2023?

19 What type of plant grows from seed, flowers and dies in a year?

20 Who is headlining at Glastonbury on Sunday this year?



# The Coffee Time Quiz

By  
Carole  
Sawyer

Answers  
on page  
28



## Can you help?

### We need someone to handle the advertising for Easebourne Magazine

You will need to make a few calls every month to renew bookings and maintain a record of advertisers. You will also be able to spot opportunities to bring new advertisers on board. If you can help with this very necessary voluntary role please call Jan Harvey on 07540 331757 or, email: [easebournemagazine@btinternet.com](mailto:easebournemagazine@btinternet.com)

## From the Listed Buildings File



## Challen's Yard

**This nine roomed dwelling was, in the early 1900's, the address of three notable residents. Chris Deadman reveals who they were**

### George Pirie

The 1905 Kelly's Directory cites George Pirie, the Scottish born artist living at Challen's Yard. The Royal Scottish Academy of Art and Architecture, of which he became President in 1933 states in his obituary that after returning from a visit to the USA, he 'spent some years at the village of Midhurst'. Knighted in 1937 his artistic subject matter was almost entirely animals and birds.

## Colonel Willoughby Brooking Mullins

The 1911 Census Schedule, which was completed by the Enumerator, entered Colonel Mullins as the Head of the Household. However, he was not present on census night. At home were his wife Mabel, his one-year-old daughter Mona and three female servants (a domestic nurse, a parlour maid, and a cook).

Colonel Willoughby Brooking Mullins was born in Tamil Nadu, India in 1859. At the age of 21 he was a 2nd Lieutenant in the British Army, he served with the Indian Army in the Bengal Staff Corp in the 1880s, and the 15th Punjab Regiment in the 1890's. He and Mabel married in 1898 and their son Willoughby Montgomerie Mullins was born in Muree India in July 1899.

### Indian Army

In 1900 Colonel Mullins was a Major in the Indian Army (Staff Corps) and at census time in 1901 the family were staying at Midhurst Common with his parents (John and Emily Mullins). Serving as Lieutenant Colonel 29th Punjabis in the Indian Army in the early 1900's he was discharged in January 1912. Willoughby re-joined the British Army in 1914 as Colonel Commander 12th Batt. Northumberland Fusiliers and served in Egypt between 1915 and 1918 with

the Sherwood Forresters. The 1915 Kelly's Directory notes that Colonel Mullins was living at Ambersham House. He died in October 1938.

## Edward Giles

Edward Giles, Companion, Order of the Indian Empire (C.I.E.) is listed in the 1915 Kelly's Directory as residing at Challens Yard. Born in Grimsthorpe Lincolnshire in 1849, he went to Oxford University where he rowed in the 1871 boat race against Cambridge and was awarded a first-class degree the following year in Modern History.

### Professor

Edward went to India in 1873, where his first role was as a Professor of History and Political Economy, becoming the Director of Public Instruction in 1897. He then acted as Director General of Education between 1906 and 1908.

Edwards' older brother Robert Giles also worked in India in the Civil Service and was also appointed C.I.E. in the 1899 Birthday Honours. On his retirement in 1902 Robert returned to live in Midhurst, where he was a JP for West Sussex.

Challens Yard is currently (2022) a property owned by the Cowdray Estate and available for holiday rental.

■ [cmdeadman@btinternet.com](mailto:cmdeadman@btinternet.com)



Formed in 1960, the Midhurst Society aims to preserve, protect and improve local features of historic or community interest. It seeks to enhance the local environment and amenities. Above all, it strives to make Midhurst a better place to live, work and enjoy.

## TALKS

20 July at 7.30pm

**The Memorial Hall, North Street**

The speaker will be one of the trustees of the Midhurst Museum, said to be the world's tiniest museum.

**21 September** Best-selling author Tristan Gooley, known as the Natural Navigator, will be the speaker.



Call Out: We are trying to locate the artist who painted the stunning watercolour shown above.  
If you can help please email [easebourneditor@btinternet.com](mailto:easebourneditor@btinternet.com)



## LOGS



**2-yrs seasoned  
hardwood cut and  
split to order**

Established 1992

**Call for current prices –  
Free local delivery**

**Rob Boddington  
01730 815302 or 07787 565544**

## ULTRA CLEAN

**Local Domestic Cleaner**

Hard-working and Reliable

References available

Hours to suit

Reasonable rates

01730 812507

07776 100300

# A Gardener's Diary

Many of you will have heard the phrase 'Rewilding' and 'No Mow in May' and I have mentioned before about sowing wild flower mixes.

The most important thing we can all do in the average sized garden around Easebourne is to grow a range of plants that will flower over a long season.

Many gardens are just a big lawn because it is so much easier to just mow and trim, but there are many plants that add interest and variety. Of course a small wild flower area can be lovely in the short term, but remember it needs managing and when finally the time comes to be cut down, it can be a lot of work to clear up and clear away.

by John Humphris



*Easebourne churchyard,  
left to grow wild*

Now here is an interesting thing. Many years ago most farms were small, not only were they small but each field was also small. And each of those fields had deep hedges (wonderful for birds nesting) with usually an area of wild flowers on either side. Then along came the farmers who were keen on being more productive and more profitable. So many hedges disappeared as fields became ever larger making it easier for the larger tractors.

All of us can do our bit to encourage wild life; I just hope the message gets across to everyone, not just the average small garden owner.

■ [jjhumphris@gmail.com](mailto:jjhumphris@gmail.com)

## Fresh Milk!

Our milk vending machine sells fresh, gently pasteurised and non-homogenised whole milk straight from the cow! Bring your own containers or buy one of our reusable 1 litre glass bottles.

We also sell home grown potatoes and free range eggs



Buddington Farm,  
Hollist Lane, GU29 0QP

[alfierenwickwork@gmail.com](mailto:alfierenwickwork@gmail.com)

07500 666672 or 07999 921348

[www.buddington.co.uk](http://www.buddington.co.uk)

# A Day Out To.....

## Hampshire Open Studios

Hampshire Open Studios is an annual arts event that allows the visiting public to meet participating artists in their homes, studios and galleries free of charge.

With over two hundred and fifty venues open, in the ten days leading up to August Bank Holiday Monday, visitors have the opportunity to meet the makers directly and learn more about their work.

Every type of art and craft is on offer in the region, including painting, sculpture, ceramics, glass, furniture, jewellery and many more.



**Jan Harvey  
recalls last  
year's  
adventure  
on the trail**

This year Herbert Hedley is taking part for the first time. I caught up with Fi Beresford, who owns this beautifully curated gallery just inside the Hampshire border. I asked her what is so special about an open studios event.

'We are delighted to be part of the Open Studios this year, and have curated a gorgeous collection of summer inspired

works for everyone to enjoy. It is always lovely to visit artists in their studios and get a feel for their process and environment and this event is a fantastic opportunity to find new favourites. For us it is about creating a space



### HERBERT HEDLEY GALLERY & SHOP

A LOVINGLY CURATED COLLECTION OF FINE ART AND  
BEAUTIFUL THINGS FOR YOU AND YOUR HOME  
10-5 TUESDAY - SATURDAY 11-4 SUNDAY

WESTMARK BARN  
A272/MIDHURST ROAD  
PETERSFIELD GU31 5AT

HELLO@HERBERTHEDLEY.CO.UK  
01730 269696  
WWW.HERBERTHEDLEY.CO.UK

that is calm and inviting, inspiring people to create a home and a life filled with beauty, colour and texture.' Herbert Hedley is an example of the thoughtful curation that goes into projects like this. The different types of venue are always a particular joy to visit too.

I spent a wonderful Bank Holiday Monday last year taking in a number of sites. One artist I visited was the talented Jenny Hill-Norton who works in a centuries old barn in the tiny hamlet of Newton Valance. Whilst Paul Traceys' huge paintings of piers, from all around the world, completely fill his more contemporary house in Liss. Frans de Leij who, I discovered, is an exceptional painter of cats will, this year, show his work from his home in Petersfield. He also, by coincidence, has paintings on show in Hedley Herbert.

Group exhibitions always offer good value with collaborating artists displaying their work under one roof. This year College Arts, Quint'essential and Studio Nine look like promising destinations. So, why not invite some friends along and make a day of it? It's a road trip you'll most certainly remember.

■ [www.hampshireopenstudios.org.uk](http://www.hampshireopenstudios.org.uk)



Karen Carpenter



Jenny Hill-Norton



Harrison Jones



Individually crafted, beautiful buildings

Energy efficient extensions,  
homes, offices and studios.

Planned, designed and  
sustainably built by Artizans.

Call Dylan and Liza:  
01730 815885

[builtbyartizans.co.uk](http://builtbyartizans.co.uk)  
#builtbyartizans

"If you're thinking of using them, I'd say 'do it!' They're fun to work with and they do a great job."

Anne Dennig, Botany Bay Conservancy, Sussex

# News from The King Edward VII Estate



*The Engine House renovated*

# Historic Engine House Completed As New Work Begins

**Renovation of the Engine House, which includes an eighty foot chimney, is now complete. The building, erected in 1905, has been sympathetically restored to retain many of the original features.**

According to author Sandy Large in his book about the King Edward VII Hospital, engineering machinery built to support the enormous building was necessarily solid, reliable and built to last. The steam generating plant consisted of two enormous coal-fired Lancashire boilers which remained in place until 1958. They were so vast they had to be dismantled in situ and removed piece by piece.

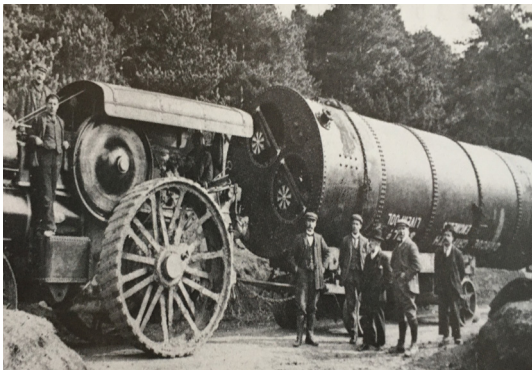
These boilers provided steam to drive electricity generation units that fed the entire complex. Nothing was overlooked and exhaust steam from the engines was passed through calorifiers to supply hot water for radiators and baths. When the Sanatorium went on

grid in the 1930s the Willans and Robinson's boilers were kept for emergencies however, when they were finally decommissioned they were regarded so highly, from an engineering perspective, they were sent to museums in Birmingham and the USA.

The engine house is now apartments, and all are now sold, as City and Country progress with their plans to develop the estate. Next in line are the West Apartments for which planning permission exists.

● Jan Harvey

*The boiler arriving by steam engine in 1905*



*Picture by kind permission of Gravelroots*

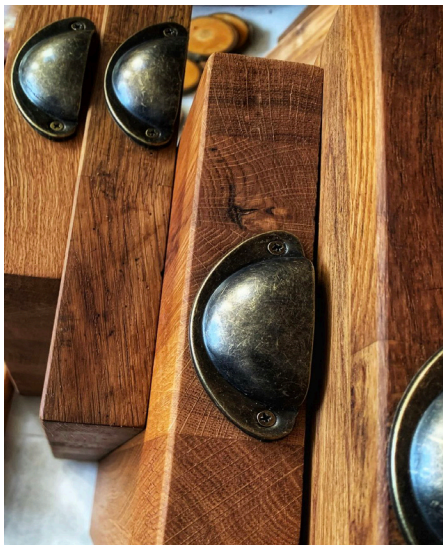
# Seeing The Wood

**It takes creativity to see potential in transforming a piece of wood into something unusual, something completely unique. To see the transformation through from concept to a finished, marketable product takes real talent.**

For interior decorator, Karen Rose, who lives on the King Edward VII Estate, extending her passion for all things wood into a new business was a natural progression.

“If I was decorating a client’s home I often found they needed a wooden shelf, or stool, or lovely chopping board to add a statement piece to a room.’ Says Karen. “These I began to make as required and the business started from there.”

Shortly after starting out, Karen was fortunate to be offered wood from the yew tree mentioned in the George Eliot novel, Middlemarch.



“That was a really amazing opportunity for me” she says. “I decided the most appropriate product to make was pens, I’m thrilled with the results.”

Karen’s work is on sale at The Barn Emporium at Durleighmarsh Farm To commission a piece from her email: [karenrose@vault5.com](mailto:karenrose@vault5.com)

● Jan Harvey



## Bespoke Wooden Treasures

### All Wood Here

Top Quality, Hand-made Gifts Made  
From Upcycled or Sustainable Local Wood

Instagram @allwoodhere

# The King, the Bench and the Tree



**To celebrate the Coronation of The King, Residents of the King Edward VII Estate organised a fund-raiser to purchase a commemorative bench and a special tree for the grounds of the former hospital.**

The tree is a King Edward Coronation apple tree, a native Sussex variety. It proved very difficult to source but, in the end, the persistence of resident, James Brown, won the day and the tree was planted in time.

Says James: "Our tree will need a lot of watering, so we've bought a community watering can for the pur-

pose. We can all take turns now and it will reflect the inspiring community effort behind this project!"

A Grand Coronation Buffet was held, during which Betty Chatfield, one of the most established residents on the estate, was asked to unveil the specially carved bench.



With entertainment from soloist Deesha Chandrasma, pianist Tracey Carr, a guest appearance by American baritone Michael Niederer, who sang the National Anthem, it was an unforgettable day.

● **Jan Harvey**

*Pictured above: Betty Chatfield sits on the newly unveiled bench  
Below Deesha Chandrasma enjoys a quick sandwich before she sings.*



## *In Easebourne Fields*

In Easebourne fields, of green and gold,  
The great oaks watch in silence,  
The thud and scrape of battle royal.  
Rippled muscles, leathers stretched,  
Pin sharp turns, in rapid flight  
Glossy necks, sheen slick with sweat.  
Summer heat shimmers, glinting glass,  
As spectators watch, behind safe lines,  
Their favours worn and loyalty won.

Then it is over and the day is done,  
The lawns lie empty, and the oak trees breathe  
A sigh, echoing soft round ancient hills  
Of rivalries fought, and legends told  
Of battles royal; man and steed,  
Lost to the dust of a distant time.  
Until, come twilight, and all is still  
Then purple shadows trick the eye,  
And ghosts of Easebourne fields ride by.

◆ The Shy Poet

After many years of providing a poem for United Easebourne Magazine, Sue Absolom has laid down her pen. We'd like to thank Sue for her wonderful contributions. We very much want to see poetry in Easebourne magazine so please submit your work to us and, where space allows, we will feature it.

■ [easebourneeditor@btinternet.com](mailto:easebourneeditor@btinternet.com)

# Nature Notes

## Stinging Nettles

By Michael Blencowe of the  
Sussex Wildlife Trust



**In the shadows under the Oak trees my enemy awaits. There are hundreds of them, huddled together in a silent, ferocious mob. With their drab green leaves and insignificant flowers, the Stinging Nettle is a joyless plant, infamous only for its ability to inflict pain.**

I can almost hear these nettles straining at their roots, desperately trying to reach me because I am in possession of something they crave: a pair of bare legs. When I started writing this article, I realised that I hadn't been stung by a Stinging Nettle for so long that I had forgotten what it felt like. So, dear reader, just for you I am wading into a nettle patch in a pair of shorts.

As my legs brush the underside of the nettles' leaves, I break the fragile tips off hundreds of hollow hairs, and I'm injected with histamine, serotonin and acetylcholine, with a splash of formic acid. This volatile cocktail acts like napalm on my knees – my skin itches and blisters and that familiar fiery, tingling, pulsing pain sears up my spinal cord. The plant does not inflict this agony as some sadistic vendetta

against schoolchildren and writers. The nettle's hairy, hurtful suit of armour is a defence mechanism against hungry herbivores.

Despite our hatred for the Stinging Nettle, we have found many uses for it over the centuries as cloth, medicine, and food. Seventeenth century Sussex herbalist Nicholas Culpeper claimed nettles cured everything from nosebleeds to leprosy. Celebrity chefs extol the virtues of vitamin-packed nettle soups and risottos. The caterpillars of our most impressive butterflies enjoy munching on nettles too; Red Admirals, Peacocks, and Commas all depend on them.

I soon start frantically searching for a cure. Rubbing mashed dock leaves on my legs has always soothed my stings so I was surprised to read that it's all a ruse. Scientists claim dock leaves are simply a placebo.

Beyond the nettle patch I stumbled across an amazing glade of orchids, vibrant and stunning in the sunshine. In an instant the stinging stopped. Maybe it was all in my mind after all!

# Treasure Trove



Reader, Tracy Smithers, has sent in this picture of a family heirloom. It belonged to her great, great Grandfather, John Withall. John was a tenant farmer at North Park Farm, Fernhurst which was part of the Cowdray Estate, from around 1878 until 1900. He often travelled to Midhurst by horse and cart and this wine flagon was probably bought there.

Do you have a similar family heirloom you could share?

Send a picture and any relevant information to:

■ [easebourneditor@btinternet.com](mailto:easebourneditor@btinternet.com)

Easebourne Garden and Allotment Society

## Annual Produce Show

5 August, Cowdray Hall

Society members are invited to compete in the Annual Produce Show. There are three divisions: Vegetables; Flowers and Floral Arrangements and Baked Goods/Preserves and Fruit. To become a member (£4.00 per year) and take part contact Tina Litchfield

■ [EGAS@tinagavin.com](mailto:EGAS@tinagavin.com)

■ 01730 816542.



Mention should be made of the exceptionally well-built new bins at Cowdray which, now covered in sedum, really enhance the area.

## Quiz Answers

1 10,080 2 Finland 3 Delta 4 Kefir 5 Mayflies 6 Horse 7 Spare 8 Avocado  
9 The Salvation Army 10 Seal 11 Cornwall 12 Watts 13 Slavery  
14 Calligraphy 15 Yellow 16 Tanzania 17 Eyes 18 Edinburgh Festival Fringe  
19 Annual. 20 Sir Elton John

# PARISH COUNCIL NEWS

Judith Macdonald-Lawson,  
Easebourne Parish Councillor

Easebourne Park has been busy with families enjoying the summer sunshine and it is a-buzz with insects. Tom and the Goat Box are there for coffee and snacks every week from Thursday to Saturday and we now have a fully installed and working Eco-Loo plus baby-change facility. Both loos will be open at the weekend and throughout the school summer holidays.

The Parish Council is now focusing on increasing biodiversity in and around the Park, and will be installing bat and bird boxes, leaving nettles and other wild flower species to flower and set seed and continuing to explore ways in which we can extend this green initiative to the wider parish.

Please do consider getting involved, as a parish councillor, a member of FREP, or even consider becoming our new parish clerk. Being an active member of Easebourne community is hugely rewarding, both in getting to know other parishioners and in being part of the caretaking and shaping of the parish for others to enjoy now and in the future.

And lastly, on a slightly less positive note, please pick up dog poo wherever you walk in the village. Biodegradable bags are available at the park and dog waste can be disposed of in all council bins. Dog faeces can take twelve months to break down fully.

■ To find out more or to become part of our team visit: [www.easebourne.org](http://www.easebourne.org)



## Perfect Motion Physio.

- » **PMP 'on demand' from 5-45mins - £18/month.** Pilates, conditioning, stretching and educational classes. Sign up for yourself or gift someone a subscription.
- » **Specialist physiotherapy** for aches, pains, sports injuries and general body MOTs.
- » **Women's health physio** for all pelvic related issues including pre/post natal physio and exercise rehab, menopause-related care.
- » **Physio-Pilates** - small and large class options, 1:1's.

Appointments at our Midhurst treatment rooms | 07471 733558  
[perfectmotionphysio.com](http://perfectmotionphysio.com)

design marketing words web  
branding logo design  
leaflets brochures adverts  
posters banners exhibitions  
website design and development  
copywriting blog training  
marketing strategy  
training and consultancy  
social media emailers  
ecommerce websites  
#lovemidhurst  
#talktoHOOLI.

Get in touch with Julia and Rachel.

01730 816484 | [hello@hooli.co.uk](mailto:hello@hooli.co.uk) | [hooli.co.uk](http://hooli.co.uk) | 

Nº1 West Street, Midhurst, West Sussex GU29 9NF

# HOOLI.

Design | Marketing | Words | Web



# JE

Bespoke Curtains, Blinds  
& Soft Furnishings

Friendly & Professional  
Independent Business  
Hand made in Petworth

[jem@josephineellen.co.uk](mailto:jem@josephineellen.co.uk)  
07837479209  
[www.josephineellen.co.uk](http://www.josephineellen.co.uk)

JOSEPHINE ELLEN INTERIORS

# Through The Church Gate

CHURCH  
NEWS AND  
INFORMATION

## CHURCH SERVICES FOR JULY/AUGUST 2023

Date	Easebourne	Lodsworth	Selham
2 July Trinity 4	10.30am Family Service	6.00pm Evening Prayer	8.30am Holy Communion
9 July Trinity 5	10.30am Holy Communion	9.00am Family Service	No Service
16 July Trinity 6	10.30am Holy Communion	6.00pm Celtic Service	8.30am Holy Communion <b>St. James</b>
23 July Trinity 7	10.30am Holy Communion	9.00am Holy Communion	No Service
30 July Trinity 8	10.30am Holy Communion	<b>No Service</b>	<b>No Service</b>
6 August Transfiguration	10.30am Family Service	6.00pm Evening Prayer	8.30am Holy Communion
13 August Trinity 10	10.30am Holy Communion	6.00pm Family Service	No Service
20 August Trinity 11	10.30am Holy Communion	6.00pm Celtic Service	8.30am Holy Communion
27 August Trinity 12	10.30am Holy Communion	9.00am Holy Communion	No Service

**Bold type denotes any changes**

**Rector: Rev Derek Welsman**  
01730 812655

**Curate: Liz Yonge**  
07747 611993

### Churchwardens

#### Lodsworth

Mrs Lynne Todd  
01730 861399

Mr Deryck Hamon  
01730 861850

#### Selham

Mrs J Colman  
01730 861267

Mr Roger Comber  
01730 861320

[www.thepriorychurches.co.uk](http://www.thepriorychurches.co.uk)

# From the Vicar

Reverend Canon Derek Welsman

*Dear Friends,*

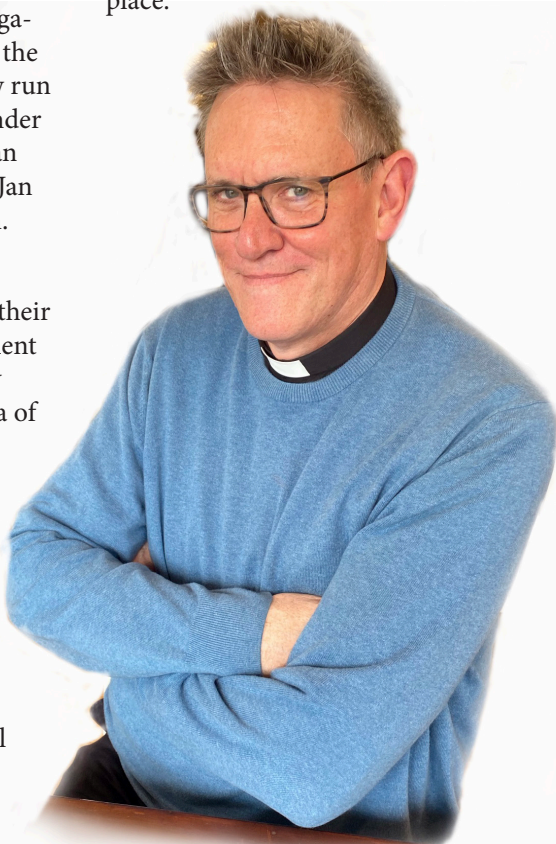
Village life is very much down to those who live in a village. Pubs close when the villagers stop using them, village schools close when there are no families and churches cease to exist when the congregation no longer attends. So, if we want our villages to thrive with all the usual elements; shop, pub, school and church, then it is down to us to use them. That is also why a village magazine is important – a portal to all that is good in our shared life.

After many years with the congregation of St Mary's putting together the magazine, this new edition is now run by a new team from the village under the wonderful editorial skills of Jan Harvey, and we are so grateful to Jan for taking this important work on.

I want to say a huge thank you to Tina and Gavin Litchfield, for all their years of dedication and commitment to this publication. They certainly transformed it, bringing in the era of colour. Now, under Jan's editorial expertise the magazine will have a new lease of life.

Village magazines are a wonderful tool for everyone who lives in a village. A way to publicise, celebrate and inform about the place we live, but it doesn't do this on its own. Jan will need all of us to send her articles and information about village life

and events. So, let's all continue to get behind this publication, to make sure that we all have a wider picture of our community all that is happening in our midst. Each month I will post a service rota in the magazine, and I encourage others in the church to use this publication to tell everyone about important events. As a church family, we love to play our role as part of this important and historical West Sussex village. So let us all work together to support and upkeep the life we share and value. We truly live in a beautiful and wonderful place.



# Church Events

Every Wednesday at 3pm  
St. Mary's Church Easebourne  
All are welcome

## TEA AT THREE

Join us for coffee, tea, treats and a good chat.

Bring along your crafts; invite your  
neighbours; children are welcome too.

**Contact Reverend Liz Yonge for more  
information t 07747 611993**

■ [revlizyonge@outlook.com](mailto:revlizyonge@outlook.com)

## FRIENDS OF ST MARY'S 200 CLUB

**200  
CLUB**

### June 2023 Winners

Prize	£	Share	Winner
1	100	4	Barbara Smith
2	75	11	Bill Howkins
2	75	90	Valerie Haggie
3	50	78	Bob Lewis
3	50	128	Veronica Jull
3	50	53	Linda Joy Jones

If you would like to join  
the 200 Club please contact:

Mike and Margaret Wharton

**t 01730 810474**

**or e [mike@mwassociates.eu.com](mailto:mike@mwassociates.eu.com)**

Winners will receive monies by bank transfer

## The Women's Fellowship

# Celebrating 70 Years



**Ann Harfield  
reports on a  
wonderful  
celebration**

Rev. Derek opened the proceedings and we were pleased to welcome several previous members and friends.

We began with a quiz which provided much amusement. Then it was on to a lovely tea, prepared and served by the Church Social Gang.

One of our members, Pam Stevens, made a beautifully decorated anniversary cake and everyone received a piece together with a glass of fizz to round off the afternoon. It was so nice to meet up and chat with old friends, and all agreed it was a jolly good party.

Our thanks go to Rev. Liz for taking photographs, Rev. Derek for all his help and a big thankyou to the Social Gang.



## Do you love to sing?

St. Mary's Church Choir sing most Sunday mornings at the 10.30am service and also for weddings and funerals.

We rehearse on Friday evenings at 6pm and would welcome new voices, both high and low. We particularly need alto voices.

For more information about joining us please phone Mary Knight, our organist and choir leader on  
t 01730 812783



*Mary Knight*



## MESSY CHURCH

For the parishes of Lodsworth,  
Selham and Easebourne

Crafts Songs Celebration Food and  
plenty of opportunity to make a mess!

For more information  
call Liz Yonge  
07747 611993

Wednesday 27th September

3.30pm - 5.30pm



## LITTLE LAMBS

Come and join us for  
tea, chat, toys, stories  
and songs for little lambs  
aged 0-4 years

Term Time Tuesdays 10-11.15am  
in St. Mary's Church Easebourne

**Everyone is welcome**  
Suggested donation £1.00 per family

The Reading Rota can now  
be found on the website:  
[www.thepriorychurches.co.uk](http://www.thepriorychurches.co.uk)



## P&P DECORATORS

OVER 25 YEARS EXPERIENCE  
IN ALL TYPES OF  
PAINTING AND DECORATING

Friendly professional service  
Excellent references  
Very competitive prices  
Free estimates and advice

DAVID  
01730 812186  
07751 248593

CARLOS  
01730 813813  
07971 170233

## Church Contacts

### Vicar

#### Derek Welsman

Northgate, Dodsley Grove,  
Easebourne  
GU29 9BE  
01730 812655  
derek.welsman@outlook.com

### Curate

#### Liz Yonge

07747611993  
revlizyonge@outlook.com

### Churchwarden

Phil Stringer  
31 Elmleigh,  
Midhurst GU29 9EZ  
01730 817301  
stringers4@btinternet.com

### Churchwarden

Alison Davies  
Merrydown, Bepton,  
Midhurst GU29 OLZ  
01730 816 642  
alitdavis@gmail.com

### Parish Administrator/PCC Secretary

#### Liz Bounton

1 Bourne Way  
Midhurst GU29 9HZ  
lizbounton1@gmail.com  
01730 816405

### PCC Treasurer and Gift Aid Secretary

#### Eric Bounton

1 Bourne Way  
Midhurst GU29 9HZ  
e.bounton@btinternet.com  
01730 816405

### Organist and Choir Mistress

#### Mary Knight

01730 812783

### 200 Club

#### Margaret and Mike Wharton

mike@mwassociates.eu.com

### Social Committee

#### Jan Harling

01798 342233  
jharlingm@gmail.com

## WOMEN'S FELLOWSHIP

<b>4 July</b>	Meeting in the Church
<b>5 September</b>	General Knowledge Quiz
<b>3 October</b>	To be Confirmed
<b>7 November</b>	Holy Communion and AGM
<b>5 December</b>	Christmas Lunch

**2pm in St. Mary's Church Easebourne**

For all details of The Women's Fellowship call Ann Harfield on  
01730 813810 or email annharfield23@gmail.com

## AFTERNOON TEA

West Dean  
Tuesday 1 August



## GW LUFF

### Gardening Services

**Lawn Mowing  
Hedge Cutting  
Borders Weeded**

**Call Gary on  
01730 812507  
or 07789 060497**



## Jeremy Yeo

### Plumbing and Heating Services

All aspects of plumbing and heating from a dripping tap to a complete bathroom. Heating systems installed and maintained. Fully insured, conscientious service.

**T: 07903 113856**

**E: [plumbing@jeremyyeo.co.uk](mailto:plumbing@jeremyyeo.co.uk)**

## Caryl

### MOBILE HAIRDRESSER

A friendly and professional hairdresser with over 25 years experience who will visit you in your own home

**01730817564  
07773 473619**

## R S Services (Roger Sked)

**Need a little job done?  
Too small to trouble a large company?  
Need a local handyman?**

Minor repairs to walking aids and wheelchairs

✓ **Local** ✓ **Friendly** ✓ **Reasonable Prices**

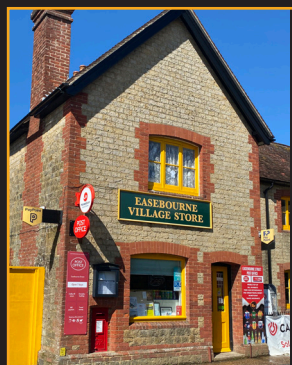
**Call Roger 01730 814948  
Mobile 07840 340021  
[rsked@btinternet.com](mailto:rsked@btinternet.com)**

## EASEBOURNE VILLAGE STORE AND POST OFFICE

**Your friendly local shop for everything  
from good wines to meat pies!**

**Groceries Parcel Force Services Stationery**

**Mon-Sat 8.00am until 7.00pm and Sun 8.00am -2.00pm  
Call 01730 858130**



# Easebourne Women's Fellowship

## *The 70th Anniversary*

**When it was founded in 1953 by Mrs Peters, the Vicar's wife and Mrs Lush, wife of the local doctor, the group was known as the 'Young Wives'.**

**By Ann Harfield and Daphne Wakeford**

entertaining and informative. Subjects have covered a wide area of topics including 'Conservation and care of hedgehogs' and a talk given by the 'Sergeant at Arms of the House of Commons'.

Over the years the group evolved into 'Wives Fellowship' and is now known as 'The Women's Fellowship'.



Those first members met in one another's homes, but now they meet in St Mary's Church.

The group has followed in the footsteps of those early members by meeting with other local groups for social events of bingo, beetle drives, quizzes and Christmas parties.

Each year, The Women's Fellowship have had a summer outing and places visited include Pulborough Brooks, skittles at Fishbourne Club, Bignor Roman Villa (pictured), West Dean Gardens, Petworth Cottage Museum, local garden centres and of course every event has to end with tea and cake.

Over the years it has enjoyed some really interesting speakers, all very

The group has raised thousands of pounds for various charities local and national, a notable one being the Chernobyl Childrens Life Line.

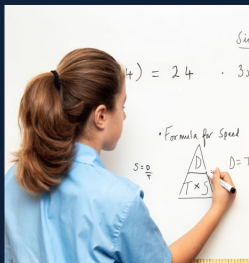
Ann remembers it well. 'In March 2013, we entertained twelve children from Belarus and their interpreter to tea in the Refectory. They had hearty appetites and ate everything offered to them, especially lots of sugar in their tea!

'They were boys and girls, young teenagers, and we wonder how they have fared, especially the lads,' she adds. 'If they survived the effects of the radiation fallout they may now be serving in their countries forces.'

**The Women's Fellowship welcomes new members and a warm welcome awaits anyone who would like to join**  
■ [annharfield23@gmail.com](mailto:annharfield23@gmail.com)

“...this is a school that really does empower”

*Tatler Schools Guide 2022*



## Dorset House School

*Preparing children for the future - from Reception to Year 8*  
*Independent prep school in the heart of the South Downs National Park*  
*Daily minibus from Easebourne*

[www.dorsethouseschool.com](http://www.dorsethouseschool.com) - 01798 831456

The Manor - Bury - Pulborough - West Sussex - RH20 1PB



# Beautiful Churches of West Sussex



**Stopham, St Mary the Virgin**

**Overlooking the Stopham vineyards, St Mary the Virgin stands on high ground near the confluence of the Arun and the Rother. It is grade 1 listed dating, in part, back to the eleventh century.**

It is a quiet and peaceful little church, being part of tiny hamlet and it doesn't take much for a visitor to imagine the many villagers wending their way to church through trees and pathways across the centuries.

The evidence of the early dating lies with the typically Saxon or Saxon/Norman transitional 'long and short' stone work in the south-east nave quoin.

Much of the rest of the church is twelfth century Norman and is little changed. New windows were fitted in the chancel in the thirteenth century, and to the nave in the fourteenth. The tower, with its hipped roof, was rebuilt round about 1614 but, rather surprisingly, it is recorded in records of the

time as being 'decayed' by 1636.

The Barttelot family, who have owned property in the parish since at least 1296 and have a long association with the church. It is quite likely that they had a strong influence on changes made during the early seventeenth century. The east window of the chancel was inserted in 1638, but is significantly older, having been transferred to its present position from the manor house

Repairs have been carried out steadily over the years to protect the church which has been brought into the modern day with a very lively and attractive web site.

Choose a quiet day, midweek, to take in the delights of this church. It is a peaceful place, a step back in time and worth the time to sit and stare.

● **Jan Harvey**



**Proclean Cleaning  
Services Ltd**

**Carpets and Upholstery  
professionally cleaned**

**Daily office/commercial cleaning**

**01243 536375**

**email: [info@proclean.co.uk](mailto:info@proclean.co.uk)  
[www.proclean.co.uk](http://www.proclean.co.uk)**



**Dog Grooming Spa**  
College Hill, Haslemere

Please visit our website:  
[littlewolvesgroomingspa.uk](http://littlewolvesgroomingspa.uk)  
[littlewolvesgroomingspa@gmail.com](mailto:littlewolvesgroomingspa@gmail.com)

**07902 397032**

**CARPET & RUG DRY CLEANING  
UPHOLSTERY & CURTAIN CLEANING  
STAIN PROTECTION**

**CALL: 01730 814965**

[www.magnadrysouthern.co.uk](http://www.magnadrysouthern.co.uk)



**MAGNA DRY SOUTHERN**

**Free Estimates - Fully Insured**

**Easebourne  
Roofing & Construction**

Family-run business with  
over 40 years experience

Pitched and flat roofs

Guttering and repairs

Craig Charlton

**T: 01730 622911 M: 07775 674173**



**Roger Poat & Partners**

**Funeral Directors &  
Monumental Masonry Consultants**



**Duck Lane Midhurst GU29 9DE**

**☎ 01730 812094 (24 Hours)**

**Michael Miller  
& Partners Ltd**

■ Pre-need Funeral Plans ■ Private Chapel ■  
email: [info@rogerpoat.co.uk](mailto:info@rogerpoat.co.uk)

# This Is Your Magazine

Village magazines are really important, they connect people, they inform, they entertain and, when they have been read they can wedge open a door!

Subscribe today and be 'in the know' about all that is going on in your local area.



## How do you do this?

Email [easebournemagazine@btinternet.com](mailto:easebournemagazine@btinternet.com) with your name and address. Then transfer £4.00 to receive the rest of this year's subscription.

### Bank details:

Barclays Bank Account No. 53523756.

Sort Code 20-20-62 Account Name:

ST.MARYS EASEBOURNE MAGAZINE

Your reference: **Really Important!**

Your surname, your postcode.

Or you can complete the form below, **put it in an envelope** and drop it in to the Post Office in Easebourne. Please mark your envelope **Easebourne Magazine.**

Or, you can find out who your friendly local distributor is and drop it in at that address. Simply email:

[annharfield23@gmail.com](mailto:annharfield23@gmail.com)

I'd like to subscribe to Easebourne Magazine please.

I have enclosed £4.00 for the period Sept/Oct 23 to March/April 2024.

Name: (\_\_\_\_) \_\_\_\_\_

Address: \_\_\_\_\_

\_\_\_\_\_ Post Code \_\_\_\_\_

Tel No: (\_\_\_\_\_) \_\_\_\_\_ Office use: \_\_\_\_\_

We will only use your details for distribution of the magazine.

Your address will be stored on a private database so that you can receive a copy each month.

Police  
Ambulance **999**  
Fire

Riverbank  
Medical Centre  
01730 812121

Out of hours NHS  
111

Community Hospital  
01730 819100

Midhurst Town Council  
01730 816953

St. Richards Hospital  
Chichester  
01243 788122

Social Services  
Chichester  
01243 752999

MH Pharmacy  
01730 813255

Midhurst Pharmacy  
01730 813231

## Contacts Page

**Editor:** Jan Harvey  
**email:** [easebourneditor@btinternet.com](mailto:easebourneditor@btinternet.com)

**Advertising:** Gavin Litchfield  
**email:** [gavin@tinagavin.com](mailto:gavin@tinagavin.com)

**Publisher:** The Benefice of St. Mary's Parish Church,  
Easebourne

**Subscriptions:** Ann Harfield  
**email:** [easebournemagazine@btinternet.com](mailto:easebournemagazine@btinternet.com)

**Vicar:** Rev. Canon Derek Welsman  
**email:** [derek.welsman@outlook.com](mailto:derek.welsman@outlook.com)

**Curate:** Rev Liz Yonge  
**email:** [revlizyonge@outlook.com](mailto:revlizyonge@outlook.com)

**Visit the Benefice Website:**  
[www.the.priorychurches.co.uk](http://www.the.priorychurches.co.uk)



@easebournemagazine

The team behind this magazine are all volunteers. All information contained herein is believed to be true and accurate at the time of going to press. No responsibility can be accepted for errors and omissions in either editorial content or advertising. The views expressed by contributors are entirely their own. No part of this publication may be reproduced, stored in a retrieval system, or transmitted in any form or by any means, electronic, mechanical, photocopying, recording, scanning, or otherwise, without the prior written permission of the Editor.

## W. Bryder & Sons

*est. 1863*

FIFTH GENERATION, LOCAL FAMILY RUN  
INDEPENDENT FUNERAL DIRECTORS

The Gables, Tillington, GU28 9AB  
Tel: 01798 342174 Fax: 01798 342224  
Email: [wbryderandsons@hotmail.co.uk](mailto:wbryderandsons@hotmail.co.uk)

- ◆ 24 Hours Service
- ◆ Private Chapel of Rest
- ◆ Monumental Stones Supplied
- ◆ Pre-paid Funeral Plans Available
- ◆ Grave Maintenance Service

# KerryType

Print, Design & Copy Centre

## printing

- » large format printing A2 to A0
- » newsletters, brochures and leaflets
- » programmes, posters and banners
- » business, personal and wedding stationery

## black and colour photocopying stationery supplies

For a fast, reliable and competitive service talk to our friendly and helpful team.

**OPEN » Monday - Friday » 9am - 5pm » private parking**  
**sales@kerrytype.com 01730 814441 kerrytype.com**

KerryType Limited, The Wharf, Midhurst, West Sussex GU29 9PX



# Property services

We're your property partners in Sussex, Surrey and Hampshire. Together, our people bring local knowledge, know-how and a 'can do' attitude like no other agency.



## with *proper* service

We listen to what matters to you and make it happen – always with a smile and with you in the loop. And when we say we'll do something, we do it.

To make an enquiry or request a valuation please contact  
**Henry Adams Midhurst: 01730 817370**

Discover more: [henryadams.co.uk](https://henryadams.co.uk)

Sales ► Lettings ► Holiday Cottages ► New Homes  
Professional Valuations ► Development Land & Planning  
Commercial ► Rural & Farming ► Fine Art Saleroom

  
**Henry Adams**  
simply different