

Vol 21 No.9 April 2023

united **EASEBOURNE**



Easebourne village and St Mary's Church magazine

What's in the April 2023 edition

SCHOOLS

Midhurst Rother College.....	1
Community Day at MRC	3
Easebourne Primary School	4

COMMUNITY

King Charles Coronation.....	7
What's On Locally	8
Foodbank.....	9
South Downs Soloists concert.....	10

REGULAR FEATURES

Carol's Quiz	11
Sussex Wildlife Trust	13
Snippets from a Gardener's Diary	15
Garden & Allotment Society	17
Poem of the month	20
Easebourne Parish Council and Friends of the parish	23
Listed Building—Bellings Farmhouse	25

CHURCH NEWS

Derek's Letter.....	26
World Day of Prayer	27
Church Diary	29
Little Lambs	31
Tea at Three	33

The deadline for the May 2023 issue of United is Friday 14th of April.

Send your contributions to:

easebourne.united@gmail.com or Tel 01730 816542

There will be information in the next issue about the new editor!



MIDHURST ROTHER COLLEGE STUDENTS BRAVE THE SHAVE

by Madeleine Hathaway



Midhurst Rother College
The best in everyone™
Part of United Learning

Bravery is defined as showing no fear of dangerous or difficult things and students from MRC Sixth Form and Headteacher Mr Edwards were certainly brave when they boldly stepped out to 'Brave the Shave' for Cancer Research UK. In front of the students and staff on a recent Friday lunchtime the event was organised by Head Boy Jacob Thompson, who, along with fellow Sixth Former Tom Gibson, prepared to lose their locks to raise funds for Cancer Research. They were joined by Millie Howe and Maddie Jones, primed and ready to take the chop and donate their long tresses to Little Princess Trust who provide real hair wigs, free of charge, to children and young people who have lost their own hair through cancer treatment and other conditions.

A Sports Hall full of students and staff listened as Denise Mordle, of Cancer Research in Midhurst, told them about the devastating impact of cancer on one in two people in the population. Denise was accompanied by colleague Nataley Coombes. Everyone then watched as Tom, Millie and Maddie lost their locks

under the skilled hands of Liam Hollands from 4:AM Barber Studio in Horsham. Mr Edwards bravely led the finale of the event by beginning the shave of Jacob's head. Liam then took over and finished the job.

After the event Jacob said, "Having absolutely smashed our goal of £1,000, I first would like to thank all the many supporters who have donated. We wouldn't have been able to do it without them! As we all know, cancer is on the rise so doing fundraisers such as this one is so important. As my role of Head Boy comes to an end, and as A-Levels are fast approaching, it's time to knuckle down and pass the baton on to our new Head Boy and Head Girl. What better way to leave MRC than raising the most money from a single event to



Tom braves the shave!



date! At the expense of having a slightly colder head that is... I am proud to have represented MRC as Head Boy over the past year. Thank you to everyone who has supported us."

The event to date has raised £2,001.90 for Cancer Research UK. If you would like to donate, please follow the link <https://bit.ly/JTBravetheShave>. Midhurst Rother College would like to give a special thanks to Liam of 4:AM Barber Studio in Horsham, for volunteering his time for free to support the event.

MERRITT'S *OF* **MIDHURST**
FUNERAL SERVICE LTD.

**Small, Independent bespoke Funeral Directors
Thoughtful, Gentle and Professional**

- Funerals tailored to suit every family's requirements
 - Various vehicle options available
 - 24 hour service

01730 816245 - 07704 530921

Enquiries@merrittsofmidhurst.co.uk



Midhurst Rother College
The best in everyone™
Part of United Learning

Community Day

Saturday 22 April 2023



Lifestyle, Leisure & Fitness, Fun Family Activities
Local Artists, Creators and Makers,
Delicious Food & Drink

It's all locally produced - locally grown
- local people - eco-friendly
- sustainable - renewable
- recycled or recyclable



FREE ENTRY

small change for
some activities

Come along
Bring your friends
Have some fun

10am - 2pm

BE A PART OF THIS WELL-ESTABLISHED AND MUCH ANTICIPATED EVENT

For more information email: madeline.hathaway@mrc-academy.org
or contact the College Office on: **01730 812451**



News from the Primary School

Caroline Hulbert, Head Teacher



World Book Day is always special as we come off timetable, everyone dresses up and we just spend the day absorbed in reading and sharing our favourite books. It is primary school at its best and this year didn't disappoint. We

had secret readers popping into different classrooms to share some of their favourite books with different classes and we worked as a whole school on some amazing new book related art for the library.

Our Year 5's have started supporting **Friendship Tea** at St. Mary's. They helped with the preparations; cutting up the cake and learning all about the perfect cuppa from Liz. They served teas and coffees and chatted happily with those from the community who attended. I think they probably ate rather more cake than they served and it turns out they are great at washing up! It's one of the real treats of the job, to see our young people in action like this and they made us very proud. We are looking forward our next visit very much.

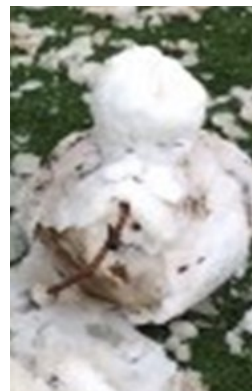


Sticking with cake for a moment – our children have been courageous advocates for Fairtrade farmers this term. They were tasked with baking something delicious using at least one **Fair Trade** ingredient to highlight the importance of buying this way whenever we can. We had some amazing entries and clearly have some seriously talented and creative bakers at Easebourne. Mrs Catchpole had the job of judging the entries which was very difficult as the standard from everyone was so high! Chef aprons and medals were awarded to Harry (KS1), Alba (LKS2) and Tula (UKS2). The cake sale afterwards raised a whopping £90 for the Fairtrade Association.

We have just had a visit from Liz and Karen, who run our local **Foodbank**, and I am delighted that we have become a Foodbank Collection Point. The reason for this is that the level of need in our local area keeps growing and unfortunately, donations are just not keeping up with demand. If anyone in the community is able to pop something extra into their shopping basket every now and then for the foodbank, it would be much appreciated and we are very happy to receive all donations at school.

Other highlights from this term ... well it SNOWED!!!! While it may have been treacherous to drive in for the grown-ups it turned our outdoor area into a Winter Wonderland, and **Dragonflies** loved it. They built very small but very lovely snowmen, wrote names and words in the snow, did some chilly snow angels and talked lots about where snow comes from!

We have been out and about in our new minibuses. Our **Year 1 Hedgehogs** have been to the Winchester Science Centre. They explored all of the different hands-on exhibits and completed a workshop on materials where they made slime which bounced! They also visited the planetarium and learnt about constellations and travelled through the solar system to explore hot and cold planets.



Mrs Stevens continues to bring the **joy of singing** to the Rother Valley, leading the **Year 3 Rother Valley All Sing event** at MRC. Our **Rabbit class** joined children from seven other schools to make a massed choir of 160 children in the MRC theatre. They explored lots of different song types including a call and response song that used different voices, a song using Makaton, a round, a feel-good chart hit and a rap. Mrs

Stevens was incredibly proud of our Year 3 class who not only behaved beautifully but also sang their hearts out and had lots of musical knowledge to share with the children from the other schools.

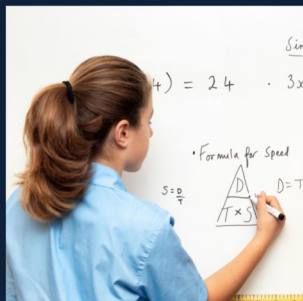


Our **Year 5 Foxes** have really enjoyed looking at **sculpture using natural resources**. They have used the local environment such as the school field, playground, Forest School and the Labyrinth for inspiration. Foxes began by completing a study of the artist Andy Goldsworthy who creates optical illusions using pattern, swirls and the environment around him as the base for his art. They created their own sculptures using classroom equipment and will soon be venturing outside to explore the shape and space of the land in our school grounds, to create their own natural sculptures.



"...this is a school that really does empower"

Tatler Schools Guide 2022



Dorset House School

Preparing children for the future - from Reception to Year 8
Independent prep school in the heart of the South Downs National Park
Daily minibus from Easebourne

www.dorsethouseschool.com - 01798 831456

The Manor - Bury - Pulborough - West Sussex - RH20 1PB





Residents of Midhurst and the surrounding parishes are invited
to join us in Market Square, Midhurst

To watch the Coronation
of
King Charles III

On Saturday 6th May 2023

More details to follow

Midhurst Town Council is pleased to announce the opportunity for the community to come together on Saturday 6 May to watch the King's Coronation. A large screen will be provided in Market Square and residents are invited to join us, either bringing a picnic or purchasing special treats from the many traders who will be joining us.

There will also be children's craft activities provided by the church. More information will be available closer to the date at

www.midhurst-tc.gov.uk

What's On Locally



Midhurst Society AGM and Talk at the Memorial Hall on Thursday 20 April at 7.30pm Commonwealth War Graves Commission

Following the AGM we have invited Ian Howard from the Commonwealth War Graves Commission to tell us about the many ways in which they work around the world to commemorate the dead of both world wars.

Visitors are welcome to all of our talks—entry £5.00

www.midhurstsociety.org.uk

Midhurst U3A—Tuesday 18 April

‘Sussex Industrial History—A Different Perspective’



by Dr Geoffrey Mead, speaking on his third visit by popular request. It's at the Methodist Church Hall and costs £2 for members. Come as a visitor for £3. Come from 2.00pm for coffee/tea and a biscuit and a chance to socialise and find out more about us. The talk starts at 2.30pm.

www.u3asites.org.uk/midhurst or Tel 01730 816459



National
Trust

Petworth House

‘Explorations in Paint’ will be on show from now until September from 10.30am to 4.00pm. Normal admission to the House applies, and no booking is required. Specially curated for the National Trust by the Royal Academy Collections.

Arts Society Midhurst

‘A Magical Mystery Tour: The English Miniature’

Lecture on **Tuesday 4th April** at the Methodist Church Hall. The speaker is Mark Cottle and he will reveal a tapestry of English History seen through the eyes of three centuries of miniaturists. Tea and coffee from 10.00am. Lecture starts at 10.45. New members welcome. Guests £7.00.

Brahms *Requiem*—Saturday 20 May

Fernhurst Choral Society will perform one of the highlights of the choral repertoire at Chichester Cathedral on 20 May at 7.30pm. Tickets £20 and £25. More information can be found here:



www.fernhurstchoralsociety.org.uk

HELP

Help me if you can, I'm feeling down
And I do appreciate you being 'round
Help me get my feet back on the ground
Won't you please, please help me?



You may recognise these lyrics from The Beatles song of 1965. The words express my message.... PLEASE HELP.



Food banks nationwide, are running low on food. Since January, Chichester area Food banks (which include Selsey, Petworth and Midhurst) took in 14.7tonnes of food. In the same period, 24.4 tonnes of food was given out. In January 2023, 77% more people were fed than last January, in February 91% more were fed than in February 2022. We are feeding significantly more people than we did last year. As a consequence of this and added to the present economic climate with rising costs and lower wages, we are in desperate need of more food.

We in Midhurst, have seen a sharp rise in the number of people requiring food parcels since Christmas. So my message to you is PLEASE HELP by placing items of food in any of our collection baskets. We have collection points in Tesco and Sainsbury's, as well as the churches, The Grange Centre, Golf Club and both Midhurst and Easebourne Primary Schools.

We are totally dependent on your donations. Without them, we cannot feed those who need our help. So please, dig deep and try to give just a little to those who have nothing.

Liz Willing, Area Representative

P&P DECORATORS

**OVER 25 YEARS EXPERIENCE
IN ALL TYPES OF
PAINTING AND DECORATING**

**Friendly professional service
Excellent references
Very competitive prices
Free estimates and advice**

DAVID
01730 812186
07751 248593

CARLOS
01730 813813
07971 170233

Easebourne Roofing & Construction

**Family-run business with
over 40 years experience**

**Pitched and flat roofs
Guttering and repairs**

Craig Charlton

**T: 01730 622911
M: 07775 674173**

CONCERT AT ST MARY'S CHURCH

on SATURDAY 15 APRIL 2023 at 7.30pm

'PASSION AND RESURRECTION'

Glorious Unaccompanied Music
for Passiontide and Easter

by the



including music by Victoria,
Palestrina, Stanford and Leighton
sung by professional singers.

Directed by George Haynes

Tickets £20 (to include programme)

available from Eric Bounton 01730 816405
e.bounton@btinternet.com or on the door

Refreshments will be available in the interval

This concert is in aid of St Mary's Church Spire Fund.
Please bring your friends.

General Knowledge Quiz by Carole Sawyer

1. What is the largest island in the world by land area?
2. What is the smallest country in the world by land area?
3. Joseph Cyril Bamford was a British businessman who was the founder of which company?
4. Which city was home to the pottery industry in England and is commonly known as the Potteries?
5. Which naturally occurring optical phenomenon is also the name given to several types of jet aircraft designed by a French company?
6. TV producers feared which broadcaster would catch avian flu while filming his latest series?
7. Which vitamin are citrus fruits rich in?
8. Who wrote 'The Day of the Jackal' about an attempted assassination of Charles de Gaulle?
9. Elba, Yukon Gold and Arran Pilot are all varieties of which vegetable?
10. Ice dancers Torvill and Dean were both raised in which British city?
11. Who has reportedly moved into Frogmore Cottage following the eviction of the Duke and Duchess of Sussex?
12. What fruits are rhyming slang for stairs?
13. In which part of your body would you find the cruciate ligament?
14. What element is denoted by the chemical symbol Sn in the periodic table?
15. Which Premier league team recently suffered a 7-0 defeat by Liverpool a week after winning the Carabao Cup?
16. Gary and Martin Kemp were in which band?
17. If you completed the Three Peaks Challenge, which three UK mountains would you have climbed?
18. French artist Edgar Degas was famous for painting which particular subject?
19. What part of a plant conducts photosynthesis?
20. What company is also the name of one of the longest rivers in the world?



Answers on page 20



JE

**Bespoke Curtains, Blinds
& Soft Furnishings**

Friendly & Professional
Independent Business
Hand made in Petworth

jem@josephineellen.co.uk
07837479209
www.josephineellen.co.uk

JOSEPHINE ELLEN INTERIORS



Perfect Motion Physio.

- » **PMP 'on demand' from 5-45mins - £18/month.**
Pilates, conditioning, stretching and educational classes.
Sign up for yourself or gift someone a subscription.
- » **Specialist physiotherapy** for aches, pains,
sports injuries and general body MOTs.
- » **Women's health physio** for all pelvic related issues
including pre/post natal physio and exercise rehab,
menopause-related care.
- » **Physio-Pilates** - small and large class options, 1:1's.

Appointments at our Midhurst treatment rooms | 07471 733558
perfectmotionphysio.com

I'm crouching behind my sofa, hiding from a squirrel. While I'm here, peering angrily out of the patio window, it has given me time to reflect on the emotional journey that led me to this place.

There was a time I was nuts about squirrels. As soon as I could walk, I was out shrieking through the autumn leaves, trying to grab a squirrel's bushy tail as it nimbly skeddaddled up the nearest Sycamore. Looking back now, I'm not sure what I planned to do with a squirrel, had I ever caught one. It's actually illegal to release a Grey Squirrel once caught because, despite their cute appearance, they can be extremely destructive.

The main problem is that they shouldn't really be in Britain. The Grey Squirrel is a North American species and we can blame Herbrand Russell, 11th Duke of Bedford, for inviting them. Herbrand's hare-brained plan was to import Grey Squirrels to embellish his estate

at the start of the last century. Distributing squirrels as gifts, he and his landowner chums assisted their spread across England. Our wildlife and landscape just weren't designed to accommodate this brash new American, and the native Red Squirrel, already in decline, was hit particularly hard. Attempts have been made over the years to control Britain's Grey Squirrel population and protect the remaining Reds, and the battle continues, but across most of England it seems the

Greys are here to stay.

In the last few weeks the battle has arrived in my back garden. I recently purchased a bird feeding station, an elaborate chandelier draped in peanut feeders, fat balls and coconut shells. Yet the Nuthatches, tits and finches are being usurped by a Grey Squirrel. I'm paying pounds and getting peanuts and it's the squirrel who is packing his cheeks. It feels like I have laid on a buffet for my friends, only to find some American bloke (who I don't particularly like) has turned up to scoff the whole lot. For weeks, we have been locked in an ongoing arms race. I don't want to hurt him – I just want him off my new bird feeder. I've deployed Vaseline, peppers and counterbalances but

each time I've been outwitted. He is agile, acrobatic and very clever.

Today I cracked. I purchased a squirrel proof baffle: a large Perspex dome, 100% guaranteed to make my peanut feeder

impregnable. I installed it as the squirrel watched curiously and, with a confident laugh, I returned to my front room...to find the squirrel was already back on the peanut feeder. I have no idea how he's doing it and he's too smart to climb there if he's being watched. So here I am, behind the sofa, trying to find out his secret. Whether trying to beat them nationally or just in our own back gardens, it really isn't reassuring to know we're being outsmarted by a rodent.



G W LUFF

Garden Services

Lawn Mowing

Hedge Cutting

Borders Weeded

**Call Gary on
01730 812507
or 07789 060497**

Jeremy Yeo

Plumbing and Heating Services

All aspects of plumbing and heating,
from a dripping tap to a complete
bathroom. Heating systems installed
and maintained. Fully insured,
conscientious service. Please call

07903 113856
plumbing@jeremyyeo.co.uk



**Please contact us for a free
Sales or Lettings valuation**

Tudor View, North Street, Midhurst, GU29 9DJ

Sales: 01730 817370 Lettings: 01730 817376

Email: midhurst@henryadams.co.uk

Website: www.henryadams.co.uk

CARPET & RUG DRY CLEANING
UPHOLSTERY & CURTAIN CLEANING
STAIN PROTECTION

CALL: 01730 814 965

www.magnadrysouthern.co.uk



MAGNA DRY SOUTHERN

Free Estimates ~ Fully Insured



Proclean Cleaning Services Ltd

**Carpets & upholstery
professionally cleaned**

Daily office/commercial cleaning

01243 536375

**Email: info@proclean.co.uk
www.proclean.co.uk**

SMART CARS (OF GRAFFHAM)

PRIVATE HIRE / TAXI SERVICE

Executive Saloon & 6-Seater Cars

Chauffeuring Service

Professional, Personal & Reliable

Accounts & Corporate Business Welcome

Airport, Docks & London Runs

Same Day Courier Parcel Service

'Anytime, any place, anywhere'

FOR QUOTES & BOOKINGS

PLEASE PHONE DOMINIC

0800 4488030 / 07823 559099

smartcars@tiscali.co.uk

SNIPPETS FROM A GARDENER'S DIARY

by John Humphris



You will be receiving this magazine at the end of March or early April and my horticultural body clock tells me that that one of the key tasks in the garden at this time is the pruning of trees and shrubs. Why is this so important? When you decide to plant any one of the very large range of shrubs available, and take a great deal of trouble and expense in making sure the soil is prepared well and it is in its best place in the garden, the one thing you will be keen to see is a shrub flowering well every year. Initially you will see that it will grow vigorously and that of

course is where the problems start.

John Anderson, the Keeper of the gardens at Savill and Valley Windsor, has one of the largest collections of trees and shrubs in the country. I remember well him saying to me how essential it was to have a programme of pruning in place each spring and early summer to make sure that 'Every plant in the garden looked at its best year on year'.

So, on the smaller scale of the average back garden, this principal still holds good.

From about its second year when all new planting begins to grow away, each shrub should be looked at to see what is needed. Apart from the flowering plants of spring such as Rhododendron, Camelia, Magnolia, etc, all those that flower from midsummer onwards need to have an annual pruning to make sure they are kept in shape, are kept compact, and do not outgrow the space allocated to them.

A very good example of this is the Hamamelis, or commonly The Witch Hazel', with fragrant frost proof flowers and good autumn colour. We have in the garden here H mollis 'Pallida' - to my mind the best in the family, flowering from the new year until mid-March. This is a vigorous shrub growing almost as wide as it is



Camelia 'Donation' in John's front garden. Now 15 years old.

high. If left unpruned, will grow very large and it would have certainly outgrown the space I have allocated to it. However after more than ten years it is still around 2 metres in size and will be due its annual prune during this spring or early summer. Growth is rapid on these established shrubs so when the new extended growth has reached its full length, they should be pruned back to within two buds of the base. This will encourage compact growth so that its size stays within the area available.

Winter honeysuckle or 'Winter Beauty' is another special shrub but again will soon

outgrow its space. Plant it near a gate or doorway to appreciate its flowers close to, but remember it will need to be pruned regularly as it is very vigorous and will flower in mild spells right through the winter, so is worth every effort to grow it well.

Many later flowering shrubs, such as the Buddleias, will often be better with some formative pruning, as they will grow very strongly during the early summer months. Do not be afraid to thin out the shoots and reduce some by half. The quality of what you have will be so much better with larger flowers of better quality.



Before pruning



A well-shaped plant after pruning

We then have those shrubs that do not fall into those general categories. They are mostly small evergreen shrubs that need to get established before any major pruning is needed. The best example are the Daphnes. Mostly evergreen, with Daphne 'Eternal Fragrance' which is a lovely rounded shrub growing much larger than expected and will eventually need pruning. This is best done in the summer months, with often those shoots pruned used for semi hardwood cuttings.

Many evergreen shrubs will also benefit from summer pruning. We have an

evergreen Skimmia which eventually after many years made a large size. Again, a summer prune is best. With these kinds of shrubs it is not easy to reduce the height but with careful pruning of the lower shoots they can be prevented from growing too wide.

The purpose of this article is to encourage everyone to look carefully at their garden and consider whether any improvements are needed. Do this on a regular basis so that you do not have too many tasks to cope with, and you are then able to enjoy the benefits of your labours.

John Humphris VMH 01730 812080

Big Plant Sale on 13 May



Easebourne Garden Society 12th Annual Plant Sale will share the date and venue with the Church Fete. This year it will start at 2.00pm and will stay open until everything is sold! Please get there early to queue for the best bargains. Put the date in your diary and tell your friends.

Easebourne Garden and Allotment Society

To join the Society, contact the secretary, Tina Litchfield, on 01730 816542, or email EGAS@tinagavin.com. It only costs £4 a year to join, or £6 for a couple. Our new Handbook for 2023 is now available. Please get in touch if you would like one. It has details of the August Produce Show and all our events for the year.

Members and guests are invited to visit the 25-acre Ramster Gardens near Chiddingfold on Tuesday 9 May. In May the Rhododendrons and Azaleas are at their peak, as are the Bluebells. There is a tea room and a Sculpture Trail curated by the Surrey Sculpture Society. For more information, please contact Carolyn Davies, email davies@hurstpp.co.uk, or Phone 812020.



MOLE CATCHING

"NO MOLE, NO FEE"

WASPS / HORNETS

CONTACT ANGUS ON 07828 134086
WWW.ASCOUNTRYSIDESERVICES.CO.UK



THE BRITISH MOLE
CATCHERS REGISTER
SUPPORTING TRADITIONAL EXPERTISE AND SKILLS



16 March 2023—The date of the tragic fire in North Street. Our sympathy goes to the affected businesses and to the families who have been displaced.



Individually crafted, beautiful buildings

**Energy efficient extensions,
homes, offices and studios.**

**Planned, designed and
sustainably built by Artizans.**

**Call Dylan and Liza:
01730 815885**

**builtbyartizans.co.uk
#builtbyartizans**

"If you're thinking of using them, I'd say 'do it'! They're fun to work with and they do a great job."

Anne Dennig, Botany Bay Conservancy, Sussex

Naomi Silva

Interior Design
Art & Photography Advisory
+44 (0)7540 264185
info@naomisilvaininteriors.com
www.naomisilvaininteriors.com

before



after



- Full-service interior design-one room or a complete house
- Floorplans, design boards, renderings
- Project management
- Colour consultancy
- Sourcing & procurement
- Staging

**Nobody
reads ads**

People read what
interests them.

“

Howard Gossage

Sometimes
it's an ad.

If you'd like help to
make your adverts more
interesting,

#talkto**HOOLI**.

Get in touch with Julia and Rachel.

01730 816484 | hello@hooli.co.uk | hooli.co.uk | 

Nº1 West Street, Midhurst, West Sussex GU29 9NF

HOOLI.

Design | Marketing | Words | Web

A Mother's Love by Marie-Louise Freake (2020)

A child brings love into your life.
That little smile that melts your heart,
Those curling fingers around yours.
A grip that yholds you from the start
and says 'I'm yours, I'm yours.'

That moment when you hold your child,
you count her fingers and her toes.
You touch her hair, her face, her nose.
She is beautiful in repose,
and by her you are beguiled.

Oh that joy that memory brings,
your naked child, smiling up at you.
She talks, she says 'agoo, agoo',
and you say 'did you really do',
and with her your heart sings



She laughs, and her whole body shakes.
You are entranced with your dear child.
Her gurgling laughter and her smile
you cherish knowing all the while
the joy communication makes.

You cry as you remember now
her faltering steps, her fall, her laugh,
her smile that spread from ear to ear.
Then up she stood, still full of cheer
and once more tottered forth.

Moments to forever savour
Moments of pure love that never
Never can be erased
Nor forgotten, forever held
In your glad heart forever.

General Knowledge Quiz Answers

1.Greenland. 2.Vatican City. 3.JCB. 4.Stoke-on-Trent. 5.Mirage. 6.David Attenborough. 7.Vitamin C. 8.Frederick Forsythe. 9.Potatoes. 10.Nottingham. 11.Princess Eugenie. 12.Apples and Pears. 13.Knee. 14.Tin. 15.Manchester United. 16.Spandau Ballet. 17.Ben Nevis, Snowdon, Scafell Pike. 18.Ballet dancers or dancers. 19.Leaf. 20.Amazon



LOGS



**2-yrs seasoned
hardwood cut and
split to order**

Established 1992

Call for current prices –

Free local delivery

Rob Boddington

01730 815302 or 07787 565544

ULTRA CLEAN

**Local Domestic Cleaner
Hard Working and Reliable**

References Available

Hours to Suit

Reasonable Rates

01730 812507

07776 100300



Dog Grooming Spa College Hill, Haslemere

Please visit our website:
littlewolvesgroomingspa.uk
littlewolvesgroomingspa@gmail.com

KerryType

PRINT, DESIGN & COPY CENTRE

Open: MON-FRI 9am to 5pm

FOR ALL YOUR PRINTING,
 COPYING - Black & Colour, Plans
 A2-A0 Posters, Banners
 Correx, Foamex & Acrylic Signs

The Wharf, Midhurst, GU29 9PX

Tel: 01730 814441

E: sales@kerrytype.com

www.kerrytype.com Free Customer Parking

EASEBOURNE VILLAGE STORE & POST OFFICE

- Friendly management
- Meat pies, sausage rolls, etc
- Good selection of wine
- Groceries • Pay Point

Opening hours—shop and PO:

Mon—Sat 8.00am—7.00pm

Sunday 8.00am—2.00pm

Tel: 858130

RYARSH CARS

- Good quality used cars at really great prices
 - All cars mechanically checked and tested
 - Full warranty on all cars
 - Excellent personal 'no-nonsense' service
- Browse our online database of cars or
 visit our showroom on the A286 in
 Easebourne***

Dodsley Lane Easebourne MIDHURST
 GU29 9BB Tel: 01730 813790

sales@ryarshcars.co.uk
www.ryarshcars.co.uk



BESPOKE CARPENTRY & JOINERY

FITTED OR FREESTANDING CABINETRY, FURNITURE,
 WARDROBES, BOOKCASES, HOME OFFICES,
 SHELVING & DRAWERS

RENOVATION & STORAGE SOLUTIONS

CALL ED FOR A FREE QUOTE OR DESIGN
 CONSULTATION

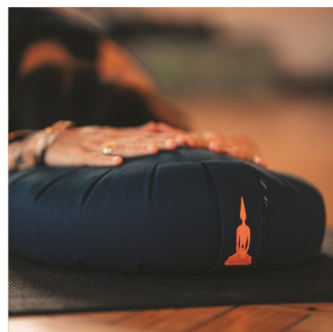
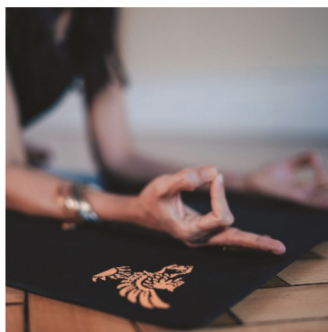
[stanton_and_willis](https://www.instagram.com/stanton_and_willis)

Stanton & Willis

edywillis@hotmail.com

07775 764354

LOCAL BUSINESS - REFERENCES AVAILABLE



COWDRAY WELLBEING

Wellbeing is an important part of the Estate's ethos. Cowdray Hall and Therapy Rooms provide a focal point for self-development, a place where you can come to step aside from the challenges of daily life. Cowdray Hall offers a broad variety of emotional and spiritual workshops, retreats, events and weekly classes.

The tranquil Therapy Rooms sit alongside the Hall and are used by a range of practitioners creating a centre of dedicated therapies including osteopathy, nutrition and acupuncture.

t: 01730 812423

Cowdray Hall Email: hall@cowdray.co.uk Therapy Rooms Email: therapy-rooms@cowdray.co.uk

www.cowdray.co.uk/wellbeing

Friends of Easebourne Parish (FrEP)

If you have recently received a pamphlet headed 'The Climate Emergency is Here' distributed by the Parish Council, and would like to pledge to 'Plant a Tree' but do not have the ability for whatever reason, why not fund a fruit tree that FrEP will plant in 'Carbon Corner' for you. Not only will this fulfil one of your pledges to 'Save Our Future' but it will also go some way towards offsetting your carbon footprint. If this is of interest, please contact the Easebourne Parish Clerk parishclerk@easebourne.org

Another pledge that you might consider is 'Community Involvement'. You can achieve this pledge by joining FrEP and helping us to undertake various tasks around the community. If you can spare some time, even on an occasional basis, do consider joining us.

Please contact our secretary via email **FREPSec@btinternet.com** or by calling **07803 933694**.

Frank Davies, FrEP Chairman

Easebourne Park News

by Mike Noble, Parish Council Chairman

Loos

A temporary loo, which will be Disability Discrimination Act compliant, will be installed for the start of the School Easter holidays. Work on the two permanent eco off-grid loos will commence on 11 April and should be completed by 24 April after which time the temporary loo will be removed. The two-chamber eco loo will be constructed with sustainable timber and the roof shingle tiles have been donated to the community by the Cowdray Estate, for which we are extremely grateful.

Roundhouse Roof

Work on The Roundhouse roof to replace the sedum with the same shingle tiles will also commence on 11 April. Areas of the Park will be cordoned off during the work and the Parish Council appreciates your patience.

Coffee Box

The Parish Council have arranged for a local coffee horsebox to visit the Park in the lead up to and during the Easter holidays to provide hot and cold drinks, cakes and bakes to Park visitors. If this is successful it is hoped to begin a project to create a more permanent facility for the community, so if you are visiting the Park over the coming weeks please support this venture.

Update from the Parishes Environment Group

Easebourne, Lodsworth and Heyshott parishes are pressing on with action in response to climate change. A Parishes Environment Group (PEG) was formed last year with representatives from the three parishes with the intention to encourage residents to step up their action on combating the problems created by the climate emergency. The severe effects of



EASEBOURNE
Parish Council

climate change have been all too evident with the scorched Park in Easebourne last summer a clear example.

Work is progressing on such initiatives as improved cycling and walking routes, but the first major step from PEG is the production of a helpful booklet on the emergency, full of ideas on what individual homeowners can do to ease the problems. Ideas range from lower laundry temperatures to making your own fertiliser. There are 24 different suggestions as well as a number of useful links to helpful websites on subjects such as recycling and living a more ethical, greener life. Many are money-saving ideas as well as having the benefit of healing our planet.

The booklet explains the extent of the climate problem and also launches a

climate pledge, whereby all residents are encouraged to pledge to commit to at least five of the suggestions in the booklet. An insert in the booklet can be completed and dropped off in collection boxes at locations in all three parishes. Residents can also come up with their own ideas as the booklet is by no means exhaustive.

It is the intention that this will be the start of many “climate emergency” initiatives led by PEG. The group has been chaired by Francis Hobbs, the District Councillor, who commented ‘I am passionate about our environment and take great pride in my modest vegetable patch! Above all, as “tenants” of our finite resources, we all have a responsibility to protect and enhance our own small piece of the planet’.



Listed Buildings of Easebourne— Bellings Farmhouse



Listed 18.06.59. Grade II House. C18. Stone with dressings, quoins and eaves dentil cornice of red brick and grey headers. Hipped tiled roof. Windows with key blocks and glazing bars intact, outer one having three lights. Doorway with Tuscan columns, pediment and semi-circular fanlight. Two storeys. Three windows. Listing NGR: SU8966222746

The Kelly's Directories of 1890 and 1899 list Richard Sommerton Bennett (age 73) as the farmer at Bellings Farmhouse. Living with him in 1891 were his wife, Elizabeth Ann (age 64), their son, Henry Tupper Bennett (age 32), and two female servants: a domestic and a cook. (Census details)

Richard and Elizabeth were married in April 1851 in Lewes; Notice of their marriage appeared in the Sussex Advertiser a month later.

Richard had been born in Worthing and this was where he was living in 1861 as

Head of his own Household. With him were his wife and son, Henry Tupper Bennett (age 2). Their sons, Sommerton Bennett and Arthur Burgess Bennett, were both born in Felpham in 1862 and 1863 respectively.

Henry Tupper Bennett was listed in the Kelly's directories as the Hon Sec of the Easebourne Village Club in the 1890's.

Richard's death was registered in Midhurst in the winter of 1901 age 82. Probate was granted on 14 June 1901 and the beneficiaries of his will were his two sons. His wife Elizabeth had died in 1896.

Church and Village Fete—13 May

Dear Friends

On Saturday 13th May at 2.00pm, we will be hosting the Easebourne church and village fete. The event carries on from the years that the church has hosted a fete; but now we want the whole village to be included. The church will provide a cake stall, bottle tombola, Bowl for the Pig, putting game and cream teas in church. The Garden and Allotment society will bring their hugely successful plant stall along. The uniformed organisations will provide games and entertainment for the children. We also will have the Parish Council with us. What we want to know is – do you want to come along and have a stall or run a small event, like a dog show? The more the merrier! So, do you make jewellery, or craft items at home that can be sold. Are you part of a group that could join us to bring colour to our event? You will need to provide your own stall and gazebo if needed.

These events are always fun and attract people from our village. This is wonderful way to get together and celebrate the life we share in Easebourne. If you would like to come and do something, or sell something, then please either ring me on 01730 812655 or email me at derek.welsman@outlook.com.

May I also take this opportunity to wish everyone a happy and joyful Easter. Across our three churches you will find services to meet all needs. Please also note our Messy Easter on the 29th March. This is a time for new life and hope - as a church the story of Jesus enriches our lives with love and hope and we invite you to join in sharing this special time of celebration.

With all God's blessings
Rev'd Canon Derek Welsman

FRIENDS OF ST MARY'S 200 CLUB

March 2023 draw winners

1st Prize - £100	No 25	Peter Greaves
2nd Prize - £75	No 66	Roger Sked
2nd Prize - £75	No 194	Peter Allen
3rd Prize—£50	No 160	Anya and Ben Griffin
3rd Prize—£50	No 70	Ouvaroff Family
3rd Prize—£50	No 73	Margaret Pratt



If you would like to join the 200 Club please contact:
Mike & Margaret Wharton, tel 810474, email mike@mwassociates.eu.com
Please note, winners will receive monies by bank transfer.

World Day of Prayer 2023

We were thrilled to host the 2023 World Day of Prayer service at St. Mary's, which saw around 50 people from across our local Anglican, Catholic and Methodist churches come together to worship. Part of a world-wide movement spanning 170 countries and taking place in a period of 36 hours, churches from each nation hold identical services in their own language, creating a multi-lingual wave of prayer that speaks out against oppression in all its forms. This years' service, created by the women of Taiwan, used real stories of how faith had transformed women's situations of abuse, oppression and climate challenges, and provided a moving and powerful testimony to the strength and endurance of women who live in the hope of Christ, as well as raising much needed funds. All those attending shared refreshments together after the service and we are already looking forward to next year!



Rev Liz Yonge



The Benefice of ST. MARY'S PARISH CHURCH, EASEBOURNE
with St Peter's Lodsworth and St James Selham

SERVICES AT ST MARY'S

First Sunday	10.30am Family Eucharist	<i>Coffee is served in Church after the 10.30 service on most Sundays</i>
Other Sundays	10.30am Holy Eucharist	
Tuesdays	10.00—11.15 'Little Lambs' Toddler Group	
Wednesdays	10.00am Holy Eucharist	
Wednesdays	3.00pm 'Tea at Three' - everyone is welcome	
Morning Prayer:	8.30am most weekday mornings except Wednesday & Friday	

SERVICES AT ST PETER'S LODSWORTH

Second Sundays	9.00am Family Service
Fourth Sundays	9.00am Sung Communion
First Sundays	6.00pm Evensong

SERVICES AT ST JAMES SELHAM

1st & 3rd Sundays	8.30am Holy Communion
-------------------	-----------------------

Vicar:	Rev Canon Derek Welsman, Northgate, Dodsley Grove Easebourne GU29 9BE Email: derek.welsman@outlook.com	812655
Curate	Rev Liz Yonge Email: revlzyonge@outlook.com	07747 611993
Churchwarden:	Mrs Alison Davis, Merrydown, Bepton Midhurst GU29 0LZ. Email: alitdavis@gmail.com	816642
Churchwarden:	Mr Phil Stringer, 31 Elmleigh, Midhurst GU29 9EZ Email: stringers4@btinternet.com	817301
Parish Administrator/PCC Secretary:	Mrs Liz Bounton, 1 Bourne Way, Midhurst GU29 9HZ E-mail: lizbounton1@gmail.com	816405
PCC Treasurer & Gift Aid Secretary	Mr Eric Bounton, 1 Bourne Way, Midhurst GU29 9HZ E-mail: e.bounton@btinternet.com	816405
Organist & Choirmistress	Mrs Mary Knight Email: mary@sussexknights.uk Practice on Fridays 6.00pm	812783
200 Club	Margaret & Mike Wharton E-mail: mike@mwassociates.eu.com	810474
Women's Fellowship	Mrs Ann Harfield Email: annharfield23@gmail.com	813810
Social Committee	Mrs Jan Harling Email: jharlingm@gmail.com	01798 342233
Editor of <i>United</i> Advertising	Tina Litchfield, 7 St John's Close, Midhurst GU29 9QB Gavin Litchfield Email: easebourne.united@gmail.com	816542
To subscribe to United phone Ann Harfield or email—annharfield23@gmail.com		813810

Visit the benefice website: www.thepriorychurches.co.uk

CHURCH DIARY FOR APRIL 2023

Sunday 2	Palm Sunday		
	8.30am	St James	Holy Communion
	10.30am	St Mary's	Family Service
	6.00pm	St Peter's	Evensong
Tuesday 74	2.00pm	St Mary's	Women's Fellowship
Wednesday 5	10.00am	St Mary's	Holy Communion
	3.00pm	St Mary's	Tea at Three
Thursday 6	Maundy Thursday		
	7.00pm	St Mary's	Maundy Thursday Service
Friday 7	Good Friday		
	9.30am	St James	Prayers and reflections followed by Pilgrimage Walk
	11.00am	St Peter's	Prayers and reflections
	2.00pm	St Mary's	Hour of the Cross
Sunday 9	Easter Day		
	8.30am	St James	Holy Communion
	9.45am	St Peter's	Holy Communion
	11.00am	St Mary's	Holy Communion
Wednesday 12	10.00am	St Mary's	Holy Communion
	3.00pm	St Mary's	Tea at Three
Saturday 15	7.30pm	St Mary's	Concert in Aid of the Spire
Sunday 16	2 Sunday of Easter		
	8.30am	St James	Holy Communion
	10.30am	St Mary's	Holy Communion
	6.00pm	St James	Celtic Service
Monday 17	4.30pm	St Mary's	Standing Committee Meeting
Tuesday 18	10.00am	St Mary's	Little Lambs
	4.00pm	St Peter's	Standing Committee Meeting
Wednesday 19	10.00am	St Mary's	Holy Communion
	3.00pm	St Mary's	Tea at Three—Knitting Bees
	7.00pm	St Mary's	APCM Meeting

Sunday 23**3 Sunday of Easter**

9.00am	St Peter's	Holy Communion
10.30am	St Mary's	Holy Communion

Tuesday 25

10.00am	St Mary's	Little Lambs
---------	-----------	--------------

Wednesday 26

10.00am	St Mary's	Holy Communion
3.00pm	St Mary's	Tea at Three

Sunday 30**4 Sunday of Easter**

10.30am	Easebourne Primary School	
		Service with communion

MAY

Tuesday 2

10.00am	St Mary's	Little Lambs
---------	-----------	--------------

Wednesday 3

10.00am	St Mary's	Holy Communion
3.00pm	St Mary's	Tea at Three

Sunday 7**5 Sunday of Easter**

8.30am	St James	Holy Communion
10.30am	St Mary's	Family Service
6.00pm	St Peter's	Evensong

RS Services (Roger Sked)

Need a little job done?

Too small to trouble a large company?

You need a handyman, then. Local.
Friendly. Reasonable prices.

Minor repairs to walking aids
and wheelchairs.

Tel: 01730 814948 Mob: 07840 340021

rsked@btinternet.com

CARYL**MOBILE HAIRDRESSER**

**For a friendly professional
hairdresser with over 25 years
experience to visit you in the
comfort of your own home -**

Phone Caryl

01730 817564 or 07773 473619

LITTLE LAMBS

**Come and join us for tea, chat, toys, stories and songs
for little lambs aged 0—4 years.**

**Term-time Tuesdays, 10—11.15am in the
church. Everyone welcome.**

Suggested donation £1 per family





Rector: Rev Derek Welsman 01730 812655

Curate: Liz Yonge 07747611993

derek.welsman@outlook.com

www.thepriorychurches.co.uk

Churchwardens: Lodsworth

Selham

Mrs Lynne Todd 01798 861399

Mrs J Colman 01798 861267

Mr Deryck Hamon 01798861850

Mr Roger Comber 01798 861320

CHURCH SERVICES FOR APRIL 2023

DATE	EASEBOURNE	LODSWORTH	SELHAM
2 April Palm Sunday	10.30 Holy Communion	6.00pm Evensong	8.30 BCP Holy Communion
6 April Maundy Thursday	7.00pm Holy Communion	No service	No service
7 April Good Friday	2.00pm Hour at the Cross	11.00am Prayers and reflections	9.30am Prayers and reflections
9 April Easter Day	11.00 Holy Communion	9.45 Holy Communion	8.30 BCP Holy Communion
16 April Easter 1	10.30 Holy Communion	6.00pm Celtic Service	8.30 Holy Communion
23 April Easter 1	10.30 Holy Communion	9.00 Holy Communion	No service
30 th April Easter 2	10.30 Service at Easebourne Primary School		

Bold types denotes any changes.

TEA AT THREE

Join us every Wednesday
at 3.00pm in the church

5 April—cup of tea with Derek and Liz

12 April—Friendship Tea—Social Gang

19 April—Knit and Natter

26 April—Primary School—Serve & Share



St Mary's Church Choir



Come and join the church choir. We rehearse on Friday evenings at 6.00, and we sing on most Sunday mornings at the 10.30 service and for weddings and funerals. We need more voices in the choir—both high and low. For more information about singing in our choir, phone Mary Knight, our organist and choir leader, on 01730 812783.

St Mary's Reading Rota for March

Date	Reading	Gospel	Reader	Intercessor
2 April Palm Sunday		Dramatized Reading		Clergy
9 April Easter Sunday	Acts 10: 34—43	Matthew 28: 1—10	Wendy Trafford	Clergy
16 April Easter 1	Acts 2: 14a & 22—32	John 20: 19—end	Phil Stringer	Wendy Trafford
23 April Easter 2	Acts 2: 14a & 36—41	Luke 24: 13—35	Julia Wain	Martin Dexter
30 April School Service			Laura Owen	

N.B. If you are unable to do your reading, please phone Hilary Craig on 813923.

AFTERNOON TEA (at THREE)

Wednesday 8th March at 3.00 pm in the church. Everyone is welcome to join us for an afternoon of chats and tea! Hope you are all keeping well and with all best wishes and love from the Social Gang. (See p. 3)



Women's Fellowship

Last month we had a most interesting talk from Liz Willing and Karen Lovett on the Midhurst Food Bank. Among the things we learned was that clients no longer have to go to the Food Bank for groceries, etc. In a rural area such as ours, transport from outlying villages is a problem, so the bags and boxes are now all delivered by the volunteers.

In April we will have a talk by Nathan, a Police Community Support Officer. His subject will be Scams and we hope to learn how to spot them and avoid being caught out.

The meeting, in church, will begin at 2.00pm. Nathan's talk will begin at approximately 2.30—2.45 and all are welcome to attend.

Ann Harfield 813810

There was a christening at the Sunday service in church recently. Derek baptized sisters Ava and Clementine. They were watched by mum and dad and the godparents, and helped by all the children who volunteered to place the rubber ducks in the font!

Welcome to the church family, Ava and Clementine!





*Fresh
Milk
Sold
Here*



Fresh milk is being sold from Buddington Farm along Hollist Lane. Our milk vending machine sells fresh, gently pasteurised, and non-homogenised whole milk - straight from the cow that very morning. Also, home-grown potatoes and local free-range eggs. Bring your own containers or buy one of our 1-litre reusable glass bottles. Open 24/7.

FIND US: Buddington Farm GU29 0QP

EMAIL US: alfierenwick@hotmail.co.uk

CALL US: 07500 666672 or 07999 921348

MORE INFO: www.buddington.co.uk

W. Bryder & Sons

est. 1863

5TH GENERATION, LOCAL FAMILY RUN INDEPENDENT FUNERAL DIRECTORS

24 Hours Service Private Chapel of Rest
Monumental Stones supplied Pre-Paid Funeral Plans available
Grave Maintenance service

The Gables, Tillington, GU28 9AB
Tel: 01798 342174 Fax: 01798 342224
Email: wbryderandsons@hotmail.co.uk



Roger Poat & Partners

Funeral Directors &
Monumental Masonry Consultants



Duck Lane **Midhurst** GU29 9DE



01730 812094 (24 Hours)

Michael Miller
& Partners Ltd

■ Pre-need Funeral Plans ■ Private Chapel ■
email: info@rogerpoat.co.uk

EMERGENCIES Police Ambulance Fire 999

Electricity	0800 0727282	Gas	0800 111999
Southern Water	0330 303 0368	Police (non emergency)	101
MIDHURST FOODBANK	07826 397732	MIDHURST ANGELS	07538 839703
Riverbank Medical Centre	812121	Out of Hours NHS	111
Woodcroft Dental Clinic	812053	St Oswald Dental Surgery	812022
Newspaper delivery (Dummers)	813348	Red Cross Petworth	0800 028 0831
Community Hospital	819100	St Richards Hospital, Chichester	01243 788122
Royal Surrey Hospital	01483 571122	Social Services Chichester	01243 752999
District Councillor Mr Francis Hobbs fhobbs@chichester.gov.uk	07968 027833	MH Pharmacy Midhurst Pharmacy	813255 813231
Easebourne Village Stores	858130	Cowdray Shop & Café	815152
Midhurst Town Council	816953	Grange Centre	0333 005 0398

RecyclingSite, Bepton Road—Opening hours from April—Thurs to Monday 9.00am—6.00pm,
closed Tuesday & Wednesday. See <http://www.recycleforwestsussex.org/recycling-sites/midhurst>

EASEBOURNE PARISH COUNCIL

Mike Noble, Chair Clerk—Sharon Hurr		Tel: 07342 166188 parishclerk@easebourne.org	
Stagecoach Buses	0345 1210190	Midhurst Yellow Bus	07879 556568
National Rail Enquiries	03457 484950	Tandem Bus	0300 030 3962

VILLAGE ORGANISATIONS

Garden & Allotment Society John Humphris, chairman	810052	Midhurst & Easebourne Youth Football Club	816415
1st Easebourne Scout Group	Sarah Jordan	sarahjordan@hotmail.co.uk	
Rainbows, Brownies, Guides	Enquiries to www.girlguiding.org/interested OR 0800 1695901		

SCHOOLS

Easebourne C of E Primary School Caroline Hulbert, Head teacher	813266	Early Days Nursery Annie Beadle	815046
Conifers School Miss Emma Fownes, Head teacher	813243	Midhurst Rother College	812451

*All telephone numbers are STD code 01730 unless otherwise stated. Please inform
the editors of errors or omissions – easebourne.united@gmail.com*

Printed by KerryType Midhurst, Tel 814441 www.kerrytype.com



Property services

We're your property partners in Sussex, Surrey and Hampshire. Together, our people bring local knowledge, know-how and a 'can do' attitude like no other agency.



with *proper* service

We listen to what matters to you and make it happen – always with a smile and with you in the loop. And when we say we'll do something, we do it.

To make an enquiry or request a valuation please contact
Henry Adams Midhurst: 01730 817370

Discover more: henryadams.co.uk

Sales ► Lettings ► Holiday Cottages ► New Homes
Professional Valuations ► Development Land & Planning
Commercial ► Rural & Farming ► Fine Art Saleroom


Henry Adams
simply different