

Vol 21 No 4 October 2022

united **EASEBOURNE**



Easebourne village and St Mary's Church magazine

What's in the October 2022 issue

Memories of our Queen	1—4
Church pages and diary	5—9
Toddlers' Group 'Little Lambs.....	6
200 Club	9
Listed Buildings—The Priory & Priory Flats	10
Petworth Park	11
Midhurst & Petworth Rotary Club	12
Midhurst Rother College—exam results	13 & 21
Easebourne War Graves—E. Clunies-Ross.....	14
'Blast from the Past'	15
Easebourne Primary School	16
Snippets from a Gardener's Diary	17
Friends of Easebourne Parish.....	18
Foodbank.....	18
Carol's Quiz	19
Sussex Wildlife Trust	20
Easebourne Parish Council—Picnic in the Park.....	22
What's On Locally	23 & 24
Local information	inside back cover

The deadline for the November issue of United is Friday 14 October.

Send to: easebourne.united@gmail.com or Tel 816542

The image on the cover is a photograph of Benbow Pond taken in October 2021.

Important message from the editors —Tina and Gavin Litchfield

We have been producing Easebourne United for nearly seven years now, and we feel it's time to put the lid back on the inkpot. Would you (or someone you know) consider taking over as editor? Do you have knowledge of desk top publishing? Give us a ring and we can tell you what is involved. We would love to find someone from the wider Easebourne community who will continue to make United an interesting magazine for the whole village, not just the church. Email: easebourne.united@gmail.com or Tel 01730 816542.

Dear Queen Elizabeth

The news of your passing came as a shock to us all. We had all imagined, hoped, that you would be immortal; serving us for years to come. So, when we heard the news, our hearts were broken, and as a nation we mourned your loss.

You were to us a wonderful queen and monarch. As the prime minister said, 'you were the rock on which this nation was built after the war', but you were so much more! In good times and bad, you were there, heading up our nation as a figurehead and focus for all your people. Thank you for your service to us – we could always rely on you being at the front; dignified, resplendent a symbol of monarchy and state.

We also want to thank you for all the hospitals, schools and public buildings you opened. For your visits around our nation, meeting people in their everyday life. I'm not sure you ever truly understood how much it meant to us

when you walked into a room – just being you, made us all feel different.

We also give thanks for all those foreign trips you made, especially around the commonwealth. You never looked tired, although I'm sure at times the itinerary

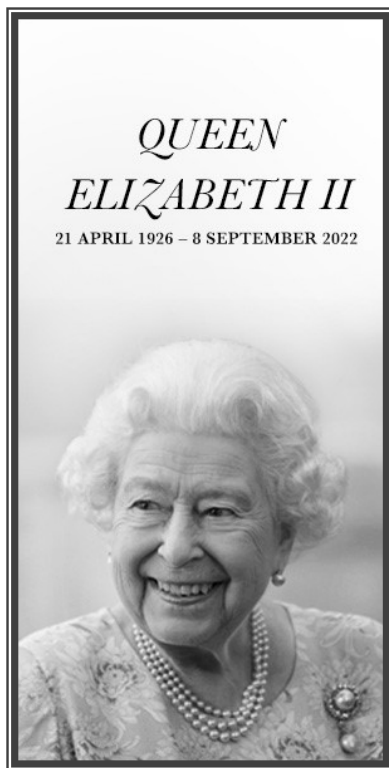
was exhausting. You shone for us around the world, your example spoke of what we are as a nation; dedicated, committed and peaceable people.

But most of all, we give thanks to God for you. Seventy years our Queen, working to the last minute – we are humbled to have lived during your reign. Now we pray you rest in the eternal peace of the God whom you served. Be confident that we will

continue to support our nation, with our new King at the helm.

For ever in your gratitude.

Revd Canon Derek Welsman



A Glorious Reign



There's a chill in the air
And we can't explain why.
Our hearts feel so heavy
And our eyes want to cry.

Everything seems such an effort -
We walk about in a daze.
How could this have happened?
We seem to have lost our way.

We feel a loss beyond measure
That's so difficult to believe
As we take in the sad news.
What else can we do but grieve.

Fate had taken a hand
And brought you to the throne.
With amazing Grace and Dignity
You made it all your own.

You served our country well -
The Commonwealth, and beyond too.
In your duty you never wavered.
Your Majesty, we Salute you.

Our hearts may have been broken
At the passing of you, our dear Queen,
But with your devotion to your duty
What a Glorious Reign it's been.

After 70 years at the helm
Into God's arms may you now rest.
You will live on in our hearts forever.
There is no doubt....you were the best.

R.I.P MA'AM

The Apprentice Gardener

This time of sadness for the Queen's death has made me reflect on a presentation to the Garden and Allotment Society earlier this year by Jim Buttress who had been Superintendent of the Central Royal Parks. His job was to ensure the smooth running of all the royal parks and gardens in London including Buckingham Palace gardens.

A certain Fred Nutbeam had been head gardener for Buckingham Palace gardens since the early 1950's when the Queen was new on the throne. Fred was Sussex born and bred - a salt of the earth character. In earlier days Fred was known to push young Prince Charles and Princess Anne around the gardens in his wheelbarrow, underlining the trusting relationship between gardener and Queen. Jim recounted this story:

Jim and Fred were on their regular tour round the garden on one occasion in the late 1970's when the Queen was not expected to be in residence. Suddenly

however the Queen appeared. Jim was somewhat taken aback to hear Fred say to the Queen, 'You shouldn't be here', and for her to respond with words to the effect that plans had changed.

Another story Jim recounted was that the Queen would sometimes escape from the heavy duties of state and come into the garden. She would ask Fred if he could give her a task to carry out. However the respectful relationship was such that on one occasion Fred had admonished the Queen because she had left her gardening tools lying around and that she should tidy up.

These stories perhaps tell us something of the character of the Queen in this home setting of being able to accept the position of assistant gardener. In a wider context 'being the servant of the people' meant more to her than mere words.

GWL



The Queen and the War Doctor

A few years ago we were invited to the Primary School to hear a talk by Dr David Nott where he was promoting his book 'War Doctor—Surgery on the Front Line'. Dr Nott is a vascular surgeon working in London but he used to give up several months every year to volunteer in war zones, working with Médecins Sans Frontières and the Red Cross. Over the years he performed life-saving surgery in Afghanistan, Bosnia, Iraq, Libya, Pakistan and Syria. He related the following story to



those attending the book launch, and later to interviewer Sue Lawley and listeners of Desert Island Discs in June 2016.

Dr Nott recalled meeting the Queen at a private lunch at Buckingham Palace in October 2014. He was seated next to Her Majesty who asked him about his recent experiences working with seriously wounded civilians in Aleppo. Suffering from Post Traumatic Stress, Dr Nott was simply unable to speak but the Queen immediately picked up on his distress. She turned to ask her courtiers to allow her Corgis into the dining room. She then produced a tin of dog biscuits and invited Dr Nott to feed the dogs and to stroke them. He added: "And so for 20 minutes during this lunch the Queen and I fed the dogs. She did it because she knew that I was so seriously traumatised. ...The humanity of what she was doing was unbelievable." (The broadcast of that interview is still available on BBC Sounds.)

TL



Individually crafted, beautiful buildings

Energy efficient extensions,
homes, offices and studios.

Planned, designed and
sustainably built by Artizans.

Call Dylan and Liza:
01730 815885

builtbyartizans.co.uk
[#builtbyartizans](https://www.instagram.com/builtbyartizans)

"If you're thinking of using them, I'd say 'do it'! They're fun to work with and they do a great job."
Anne Dennig, Botany Bay Conservancy, Sussex

The Benefice of ST. MARY'S PARISH CHURCH, EASEBOURNE
with St Peter's Lodsworth and St James Selham

SERVICES AT ST MARY'S

First Sunday **10.30am Family Eucharist** *Coffee is served in Church*
Other Sundays **10.30am Holy Eucharist** *after the 10.30am service*
Wednesdays **10.00am** **Holy Eucharist** *on most Sundays.*

Morning Prayer: **8.30am** most weekday mornings except Wednesday & Friday

SERVICES AT ST PETER'S LODSWORTH

Second Sundays **9.00am Family Service**
Fourth Sundays **9.00am Sung Communion**
First Sundays **6.00pm Evensong**

SERVICES AT ST JAMES SELHAM

1st & 3rd Sundays
8.30am Holy Communion

Vicar: Rev Canon Derek Welsman, Northgate, Dodsley Grove 812655
Easebourne GU29 9BE Email: derek.welsman@outlook.com

Curate Rev Liz Yonge Email: revlzyonge@outlook.com 07747 611993

Churchwarden: Mrs Alison Davis, Merrydown, Bepton 816642
Midhurst GU29 0LZ. Email: alitdavis@gmail.com

Churchwarden: Mr Phil Stringer, 31 Elmleigh, Midhurst GU29 9EZ
Email: stringers4@btinternet.com 817301

Parish Administrator/PCC Secretary:
Mrs Liz Bounton, 1 Bourne Way, Midhurst GU29 9HZ
E-mail: stmaryseasebourne@hotmail.co.uk 816405

PCC Treasurer & Gift Aid Secretary
Mr Eric Bounton, 1 Bourne Way, Midhurst GU29 9HZ
E-mail: e.bounton@btinternet.com 816405

Organist & Choirmistress
Mrs Mary Knight Email: mary@sussexknights.uk 812783
Practice on Fridays 6.00pm

200 Club Margaret & Mike Wharton 810474
E-mail: mike@mwassociates.eu.com

Women's Fellowship
Mrs Ann Harfield Email: annharfield23@gmail.com 813810

Social Committee Mrs Jan Harling Email: jharlingm@gmail.com 01798 342233

Editor of United Advertising Tina Litchfield, 7 St John's Close, Midhurst GU29 9QB
Gavin Litchfield
Email: easebourne.united@gmail.com 816542

To subscribe to United phone Ann Harfield 813810
or email—annharfield23@gmail.com

Visit the benefice website: www.thepriorychurches.co.uk



LITTLE LAMBS

Come and join us for tea, chat, toys,
stories and songs for little lambs
aged 0-4.

Term -time Tuesdays, 10-11.15am

St. Mary's Church, Easebourne,



Everyone welcome. Suggestion donation of £1 per family.



CHURCH DIARY FOR OCTOBER 2022

Sunday 2	16 Sunday after Trinity		
	8.30am	St James	Harvest Service
	10.30am	St Mary's	Harvest Service
	6.00pm	St Peter's	Evensong
Tuesday 4	10.00pm	St Mary's	Little Lambs
Wednesday 5	10.00am	St Mary's	Holy Communion
	2.30pm	St Mary's	Messy Church
Sunday 9	17 Sunday after Trinity		
	9.00am	St Peter's	Holy Communion
	10.30am	St Mary's	Holy Communion with baptism
Tuesday 11	10.00am	St Mary's	Little Lambs
	2.00pm	St Mary's	Women's Fellowship
	4.30pm	St Mary's	Easebourne Standing Committee Meeting
Wednesday 12	10.00am	St Mary's	Holy Communion
	3.00pm	St Mary's	Afternoon Tea
Thursday 13	9.00am	St Mary's	Conifers Harvest Service
Sunday 16	18 Sunday after Trinity		
	8.30am	St James	Holy Communion
	10.30am	St Mary's	Holy Communion
	6.00pm	St Peter's	Celtic Service
Tuesday 18	2.00pm	St Mary's	Macmillan Service
	4.30pm	St Peter's	Lodsworth Standing Committee Meeting
Wednesday 19	10.00am	St Mary's	Holy Communion
Thursday 20	10.45am	St Mary's	Easebourne Primary School Harvest Service
Sunday 23	Last Sunday after Trinity		
	9.00am	St Peters	Holy Communion
	10.30am	St Mary's	Holy Communion with baptism

CHURCH DIARY FOR OCTOBER (cont'd)

Wednesday 26	10.00am	St Mary's	Holy Communion
	7.00pm	St Mary's	Confirmation Service

Sunday 30	4 Sunday before Advent		
	10.30am	Lodsworth Village Hall	
			United Harvest Service

NOVEMBER

Tuesday 1	10.00am	St Mary's	Little Lambs
	2.00pm	St Mary's	Women's Fellowship AGM
Wednesday 2	10.00am	St Mary's	Holy Communion
	7.00pm	St Mary's	All Souls Service

Sunday 6	16 Sunday after Trinity		
	8.30am	St James	Holy Communion
	10.30am	St Mary's	Family Service
	6.00pm	St Peter's	Evensong

St Mary's Reading Rota for September

Date	Reading	Gospel	Reader	Intercessor
2 October Harvest Festival		John : 25—35	TBA	TBA
9 October 17th after Trinity	Jeremiah 29: 1 & 4—7	Luke 17: 11—19	Irena Greaves	Wendy Trafford
16 October 18th after Trinity	Jeremiah 31: 27—34	Luke 18: 1—8	David Christie	Liz Yonge
23 October Bible Sunday	Isaiah 45: 22—end	Luke 4: 16—24	Ann Harfield	Andy Castledine
30 October All Saints	(United Service at Lodsworth)		Julia Wain	

N.B. If you are unable to do your reading, please phone Hilary Craig on 813923.

FRIENDS OF ST MARY'S 200 CLUB

September 2022 draw winners

1st Prize - £100	No 7	Pam Newbury
2nd Prize - £75	No 196	Judith Allen
2nd Prize - £75	No 202	Angela Cusick
3rd Prize—£50	No 46	Linda Chapman
3rd Prize—£50	No 22	Peggy Goodale
3rd Prize—£50	No 215	Brian Scholey



If you would like to join the 200 Club please contact:

Mike & Margaret Wharton, tel 810474, email mike@mwassociates.eu.com

Please note, winners will receive monies by bank transfer.



3.30 – 5.15pm

Wednesday 5 October

at St Mary's Church, Easebourne
for the parishes of Lodsworth, Selham
& Easebourne

More details from Rev Liz Yonge
Tel 07747 611993, from Alison
Tel 816642, or from Lynne
Tel 01798 861399

Join us for crafts, games and activities
as we celebrate Harvest and share tea
together. All are welcome!
(Note new day.)

Women's Fellowship

We all enjoyed the Quiz last month. There was a very close finish with only single points between the teams and the winners were the Petworth Team. Our thanks go to Odette Marshall for compiling the quiz, asking the questions, and keeping us all in order.

Please note that the October meeting has been altered to the SECOND TUESDAY, 11th October at 2.00pm in church. The speaker will be Jane Hyde and her subject is entitled 'Walking the Walk'. New members and guests are always welcome.

Ann Harfield 813810

Mini Christmas Fair—Saturday 26 November

The Social Gang are organising a mini Christmas event from 9.30 - 12 noon in the Church. Stalls will include Christmas Cards, Cake Raffle, Hamper Raffle, Gift Stall, Mulled wine, Coffee and Mince Pies. Proceeds to the Church Spire Fund. Everyone welcome. More information next month. **Save the Date!**

Listed Buildings in Easebourne—The Priory and Priory Flats

Grade I—Listing No. 1277106

One building. The Priory, founded by a member of the Bohun family, probably Sir John Bohun in C13, formed three sides of a Cloister, with the Church completing this on the north. The east and south ranges survive. The former comprised the C13 Chapter-house, extended eastward in the C14 (which extension was altered in C17), a passage and the Warming-house to the south, with the Dorter over the whole. The whole much altered in C19. Stone rubble with ashlar quoins. Tiled roof. Casement windows, some double lancets with trefoil heads and stone transoms and mullions. Three gables. Blocked round-headed archway at south end. Two storeys and attic. Six windows. One dormer. The west elevation formed one side of the cloister.



Photo by John Harrison

The Priory and Priory Flats —Former Residents by Christine Deadman

Alexander Brown (age 63, born in Scotland) was the Land Agent resident at The Priory, according to the Post Office Directory for Sussex dated 1866. Alexander and his wife Mary had been living in Easebourne since at least 1841 when Mary gave birth to their son George. Alexander's occupation noted on George's baptism record is "Agent to the Cowdray estate". Alexander died in October 1874 with a funeral conducted by the Rev. John Serres.

Francis Tallant (age 56, born in Northamptonshire) was resident at The Priory in 1878 and noted as being "Land Agent" in the Kelly's Directory of that year. By the 1890 edition, he had become "Land Agent & Steward to the Earl of Egmont". Francis' son, named Francis

Alwyne Tallant, was the miller and occupant of North Mill in 1878. By 1890 he had become "Surveyor of Highways" and remained resident at North Mill.



Photo by Chris Deadman 2020

The Autumn Deer Rut at Petworth Park

The deer rut is one of nature's greatest wildlife spectacles and it is one you can witness at the National Trust's Petworth Park. Every autumn the young fallow deer bucks compete to attract the most females for mating by battling it out with their antlers. You'll hear the clash of antlers from some distance away, often before you spot the deer rutting.

What to look for

- The most activity happening soon after dawn but carrying on throughout the day
- The successful bucks forming a harem of several does
- The loser being chased away by the victor

- The bucks resting in isolated areas after a rut to gather their strength

Witness the rut - Guided walks

You can join a two-hour guided walk in Petworth Park to learn more about this species, what the rut is all about, and observe seasonal behaviour, with the chance of watching rutting stags. We recommend bringing binoculars, and there will be an element of hiding and remaining silent. Walks are £5 per person, children free. Walks will run on 3, 5, 7, 10, 12, 14, 17, 19 and 21 October, 10.30am-12.30pm.

Booking is essential.

Visit www.nationaltrust.org.uk/petworth-house-and-park or call 0344 249 1895.

G Gresham-Cooke



ROTARY CLUB of MIDHURST & PETWORTH

CHARITY GOLF DAY 2022 by Helen Chapman

Midhurst and Petworth Rotary Club held their 22nd annual Charity Golf Day at the beautiful Cowdray Park course. In excellent golfing weather, 34 teams of four players took to the course and some very good scores were made. The winners with 97 points were team “MGM”; second were “Where Did it Go” with 85 points; third were “Oxygenarians” who had 84 points; and in fourth place “7th Time Lucky” with 83 points. The single ball competition was won by “The Lemmings”.



Rotary President Julian Goodall thanked everybody for their support for the day. And he thanked the main sponsor Marshall Mercedes-Benz of Chichester. He also thanked Cowdray Park Golf Club for their help and assistance with the day, and particularly the players, many of whom have played in this event for many years.

Thanks to everyone's generosity. The day raised nearly £8,000 which will mainly be distributed between our Rotary Club's two main charities this year - Dementia Support and The Charlie Waller Trust.

UKRAINIAN PICNIC IN THE PARK by Hazel Morley

Back in August, members of the Rotary Club of Midhurst and Petworth hosted a 'Picnic in the Park' for Ukrainian families in the local area, together with their host families. The date, 24 August, was Ukrainian Independence Day and we wanted to offer an opportunity for parents and children to meet one another and form more friendships. Julian Goodale, our President, welcomed over 60 guests who were treated to a delicious picnic prepared by his wife Diane and her team of helpers. There were activities planned for the children and it was an extremely relaxed and enjoyable afternoon in the sunshine at Cowdray Ruins. There was even a polo match taking place for additional entertainment!

We would like to help everyone who contributed to make it such a success.



Exam Success Celebrations

by Madeleine Hathaway



Midhurst Rother College

The best in everyone™

Part of United Learning

After two months of nail-biting anticipation, students and staff at Midhurst Rother College celebrated over the summer when exam results were released. Beginning on A level results day, Sixth Formers confirmed their places at high-quality university destinations, after receiving an excellent set of A Level results. Despite a challenging few years, an impressive 44% of entries at the school achieved A*-A grades. With an overall 100% pass rate, 71% of entries achieved A*-B grades and 91% of entries achieved A*-C grades. Testament to their hard work and academic prowess, three students at the school were awarded all A*s.

In light of these accomplishments, students at the school have been able to secure places at their first-choice universities – with a number going on to some of the country's top Russell Group institutions.

The delight continued on GCSE results day the following week, with three quarters (75%) of students achieving a grade 4 or above in both English and Maths and 55% achieving grade 5 or above in both subjects.

As well as performing well in the core subjects of English and maths, the College saw particularly strong results in Physics, Textiles, Fine Art and Dance where 100% of entries were graded 4 or above. In Biology and Chemistry, 97% of entries achieved 4 or above. In German, 95% of entries achieved grade 4 or above whilst performance at GCSE was also very strong in

mathematics, religion and philosophy, music and product design.

Commenting on this year's results, Stuart Edwards, Principal at Midhurst Rother College, said of A levels: "Many congratulations both to our Sixth Formers and wider Sixth Form team on what is an exceptional set of A Level results. These results are a highly impressive display of the resilience and determination of our young people who, despite the challenges of the past few years, have remained entirely committed to their learning." In relation to the GCSE results, he added: "It has been wonderful to see the students achieve the grades they were hoping for. They have all worked very hard and coped tremendously with the disruption and challenges created by Covid. They are a credit to themselves, their families and our school community and they should be rightly proud of what they have achieved. I look forward to welcoming these students very soon into our flourishing Sixth Form which continues to provide an excellent array of educational opportunities."

(See p. 21 for full results.)



Sixth formers:
Lillianne, Jasmine, Josh, Emily, Jack & Micah

Easebourne War Graves—E Clunies-Ross



On Friday 16th September, St Mary's churchyard was visited by the family of Egerton Clunies-Ross. Gert Clunies-Ross was an Australian officer who fought on the Western Front in 1917 and transferred to the Kings African Rifles. During his first operational patrol in what is now Mozambique, he contracted malaria and was evacuated to Millbank in London for treatment and where he died from the Spanish flu. He is buried in Easebourne as he was engaged to be married to the

Reverend Hoyle's daughter. Phil Stringer made contact during lockdown and the visit was part of the family's tour of the UK in honour of their heritage. They also met Arthur Douglas-Nugent, who also served at one time during his career with the Kings African Rifles.



Time for Dementia

Local families affected by dementia are being invited to take part in an award-winning programme, to help train the healthcare professionals of tomorrow and improve dementia care. The Time for Dementia project, supported by Alzheimer's Society, pairs families affected by dementia with undergraduate students, helping to better educate them about life with dementia and the challenges that come with it.

Every year a new cohort of Brighton and Sussex Medical School medical students take part and Alzheimer's Society are always seeking families in the area who would like the opportunity to make a difference to training health professionals. [Time for Dementia is a fantastic way for the next generation of healthcare professionals to gain first-hand knowledge of what it's like living with dementia.](#)

If you would like to know more about the project, or you know someone with dementia and a family carer who would like to take part, please get in touch with us at timefordementia@alzheimers.org.uk or call 07483 137539. More information can also be found at alzheimers.org.uk/timefordementia



A Blast from the Past



This was the Cottage Hospital in Easebourne until 1934. The building is now of course Conifers School



Children at Easebourne Primary School in 1936, enjoying their bottled milk. The Stringer twins are seated in the front row. Do you know any other children in this old photo? Who was the schoolmistress in 1936?

News from Easebourne Primary School



Shiny shoes and big smiles have been the order of the day as our children return from their summer break. Our brand-new Dragonflies class are looking quite at home already and they seem to be a very confident and happy bunch.

It was not all happiness in our first week back though, as we joined many across the world to mourn the death of Queen Elizabeth II. Having celebrated her Platinum Jubilee at school last term with a wonderful party, the children reflected thoughtfully with their teachers and classmates before joining me in Collective Worship to celebrate her extraordinary life of service. Derek and Liz joined us for this, and Derek led us in prayers for the Queen and for our new King.

I have had the privilege of taking our Rabbits (Year 3) and Otters (Year 6) classes out to Forest School this week, and I am delighted to have Heidi Coates and Jacky Clipston joining me on the FS Team as they have both completed their Forest School Level 3 training. It is an important part of our curriculum and our PTFA are fundraising this year to improve our outside learning provision - I will share plans for that when we are a little further on.

Our volunteers are back in school with us supporting the children's learning. This generous group of parents, carers and local residents help in so many ways: running or helping with clubs, driving mini-buses, hearing children read, supporting with trips and Forest School to mention a few. We are always keen to hear from anybody in the community who

would like to explore the idea of spending some time helping our children in some way, either as a one off or a regular commitment, so please do get in touch if you'd like to find out more.

This term we are running fourteen school clubs. Entry for Goblin Car was hotly contested, and the 14 STEM applications I received from our Otters class were really inventive. The brief was to demonstrate energy transfer, using the old Honda TV ad as inspiration. Examples included a working wooden model and video entries using marble runs, dominos, electric fans, kettles, hairdryers and even one family's dog Ruby. The

children's projects were creative, inventive and great fun - I was very proud of all of the children who applied. Most of the designs took many, many attempts to get right and the resilience these children showed was just fantastic.

This time last year, we drew your attention to the school's Amazon Wishlist on our website. It has been a real success, so I wanted to thank those of you who

have supported our children's reading in school by contributing to class libraries of rich texts. This is an ongoing initiative for us and the Wishlist is regularly updated with requests from class teachers and our children.

I am excited to start my first term as head at Easebourne and I look forward to sharing our news with you during the rest of the year.

Best wishes

Caroline Hulbert



SNIPPETS FROM A GARDENER'S DIARY

by John Humphris



This has been a really difficult summer in the garden with endless changes in the weather followed by a long period without rain and extremely high temperatures. It will be interesting to see what has survived, as many plants, although having lots of die back, may well recover and make decent plants again. I have noticed though how certain groups of plants have done better than others and this applies particularly to the roses. Although many were in flower before the draught set in, with careful pruning and top dressing, this encouraged a further second crop of flowers.

When we moved here in 2002 we brought with us a number of roses - one of the best being *Lady Hillingdon*. This is a large growing climber and we planted two of them on the back wall of our bungalow. We also brought with us *Rosa Graham Stuart Thomas*, a large shrub rose with sumptuous yellow flowers. Both of them are still growing well, and I put this down to major pruning in January/February. The GST had almost half of its stems reduced and any dead shoots cut back to live wood. Since then, with space at a premium, we finally planted two more small growing rambler roses this year, following a visit to David Austin Roses. They have been raising in recent years a number of much smaller growing ramblers and climbers. One of these was *Rosa Open Arms* which for a rambler had an extended flowering and mostly seemed to be free of disease. All have done well, and visits to other rose gardens confirm this. In good soil, roses have deep questing roots and with the correct winter pruning and hygiene (dispose of all prunings and leaves), they will grow well in most gardens.

Many of you will remember our visit to Mottisfont to see their collection of mostly shrub roses. I was reminded of this when a

series of articles were published in the Plant

Review on the old roses. These were by David Stone who was for 38 years the head gardener at Mottisfont. For most of that time Graham Thomas was gardens advisor to the National Trust and he was very keen to establish all together in one place as many as possible of the shrub roses available. And so began this intensive collaboration between

head gardener

and advisor with the planting over many years resulting in an almost complete collection in the Mottisfont walled garden.



I think it was in the second year of David being head gardener that I had a visit to see him to identify a number of roses. As we walked round the walled garden he was telling me of the plans with the gardens advisor. He was also very keen to plant a range of perennials to compliment and fill in between the roses, and would also be in flower as the roses needed their summer pruning. Although I visited a couple of times afterwards it was not until our visit with the garden club that you were able to see the full extent of David's vision all those years ago.

Almost all gardens will benefit from a collection of roses but they do need to be chosen carefully. And that they are ideal for the space you have and most importantly they are the type of roses you want in the garden. Pruning in winter is essential so make sure you are able to do this or have someone available to help.

Friends of Easebourne Parish (FrEP)

A big thank you to the FrEP volunteers who helped at the recent Picnic in the Park by organising the car parking and litter picking. Our gazebo attracted several possible new volunteers and also visitors complimenting us on the work we've been carrying out. With local government and other centrally funded organisations being financial stretched it is so important that groups such as FrEP continue to carry out their work around our parish. It makes a significant difference to our community if streets, footpaths, and other areas such as Easebourne Park are kept free from litter, and footpath vegetation is cut back. After a break to allow nesting birds to fledge their young, FrEP volunteers resumed footpath clearance commencing with the paths around the perimeter of the Park. There is much more clearance to be done this autumn so if you do have some time to spare, please sign up and help us to keep Easebourne parish looking good.

In the near future we will be assisting the Parish Council to fit waste bins in the parish bus shelters as well as maintaining them going forward.

New members are needed to help us continue with our work. If you would like to join us please contact our secretary via email FRPESec@btinternet.com or phone **07803933694**.

Frank Davies FrEP Chairman

NEW COLLECTION POINT IN EASEBOURNE

by Liz Willing



A huge thank you to the congregation of St Mary's Easebourne for putting food donations in the newly established Foodbank donation point in the church. Thanks to the help of your editor and positive response from Derek, we are now able to collect substantial amounts of food from the people of Easebourne.

As predicted, the demands for food are increasing by the week. Already in the week beginning 5th September, as I write this article, Midhurst Foodbank has carried out eleven deliveries, feeding 26 individuals. This includes single people,

couples and families. People in all walks of life are struggling to make ends meet.... in fact, some people have no hope of making ends meet in the current economic climate where everything is going up except, wages, pensions and benefits!

Fortunately, the Foodbank in Midhurst is able to respond to pleas for help, because of the generosity of the people within the community who can help. Having a donation point in St Mary's is an invaluable addition to our stocks.
OUR SINCERE THANKS.

? **General Knowledge Quiz**—*Compiled by Carole Sawyer*

1. Born in Cumbria in 1770, which Lake Poet had the initials WW?
2. From which river might you see Hampton Court Palace and Greenwich Park?
3. Harry Redknapp had two spells in charge of which English football club between 2002 and 2008?
4. Which two actresses are the leads in the TV series Killing Eve?
5. What is the name of the Roman road that runs between Lincoln and Exeter?
6. What is the name for the authority which controls UK lighthouses?
7. What are jockeys not allowed to have on their face?
8. In what field was Terence Donovan famous?
9. Cartoonist Reg Smythe created which cartoon character which has featured in the Daily Mirror?
10. In cricket what is a Wicket Maiden?
11. Which artist famous for his seascapes painted 'The Fighting Temeraire'?
12. Is a colour described as "sanguine" red, yellow or blue?
13. 'Getting to Know You' is one of the best-known songs from which musical?
14. A Niblick is an old-fashioned name for what type of golf club a) driver b) putter c) wedge?
15. During World War II the 617 squadron became better known as what?
16. The Pixel range of phones are produced by which tech firm?
17. What paper size is the next biggest after A7?
18. Which bird lays the smallest eggs?
19. Which Italian city is known as The Eternal City?
20. Roger the Dodger and Billy Whizz are characters from which British comic?

Answers on page 24

Legendary protest singer Woody Guthrie had the slogan 'This Machine Kills Fascists' emblazoned across his guitar. The lead singer of John Peel's beloved Half Man Half Biscuit had 'This Machine Kills Wasps' across his. Fascists and wasps. Equally hated and despised. But while one are a bunch of loathsome invertebrates that should be slapped every time they start to agitate us, I have to confess I have some empathy towards the wasps.

The wasps' world was created way back in April. A single pregnant queen emerged from her winter-long hibernation, flew, fed and founded a new colony. She single-handedly constructed 30 hexagonal homes from chewed-up wood, laid an egg in each and lovingly tended to her new babies which, when grown, became her workers. Through sheer determination, spit and sawdust they enlarged the colony, constructing an impressive suspended structure. Other workers collected food – caterpillars, flies, spiders – to feed the now-flightless Queen as she produced more eggs.

June was the golden age of the Empire. The colony swelled to almost 6000 wasps. There was a real buzz about the place. An entire self-contained Utopian society in matching yellow and black uniforms working together to serve their illustrious leader. Inside the dome, the temperature was maintained at 32 degrees. When the temperature rose on hot days, the workers

united and the whole colony whirred their wings creating a community-powered air-conditioning unit.

But dark rumours started. The Queen was becoming crazy for power. Workers' eggs were being destroyed to ensure only the Queen's offspring were raised. She had started to create other Queens in her image. With no more workers being born, work levels in the colony increased. The wasps were slaves to a tyrant.

Then came the news. The Queen is dead. Her mesmeric hold over every wasp was lost. Revolution! The virgin Queens fled to mate,

hibernate and start a new colony next year. Meanwhile the colony falls into anarchy. Paper walls are torn down, the temperature plummets. Rome burns. There is fighting and cannibalism. Those that stay face death from cold and starvation. One wasp manages to escape. Alone, betrayed by his leader, without family, without purpose he is confused and lost in an unfamiliar world. Like so many he turns to alcohol to quieten his pain and the fermented fallen fruits of Autumn provide temporary relief. Intoxicated and hungry he stumbles around searching for sugar.

And now in his dying days he bumps into us: giant creatures with sweet drinks and snacks. Our reaction to this 15mm political refugee? To swat him away with rolled up copies of The Daily Mail. So this Autumn, have some sympathy for the lowly wasp.



Sussex Wildlife Trust is an independent charity caring for wildlife and habitats throughout Sussex. We rely on the support of our members to help protect our rich natural heritage. Please consider supporting our work. It's easy to join online at sussexwildlifetrust.org.uk/join

A-Level results from Midhurst Rother College

Standout successes include:

Luke Dee, who achieved A*s in Biology, Chemistry, Maths and Further Maths. Luke will be going on to study Biomedicine at Imperial College London.

Ben Welch, who achieved A*s in Computer Science, Maths and Physics. Ben will be taking up a place at the University of Bath to study Engineering.

Will West, who achieved A*s in Computer Science, Maths and Further Maths. Will has secured a place at the University of Birmingham to read Maths.

Sebastian Searle-Donoso, who achieved A*s in Geography and Maths and an A in Psychology. Sebastian will be studying Psychology at Cardiff University.

Grace Shepherd, who achieved an A* in Drama, Geography, Psychology and an A in Sociology. Grace will be going on to study Musical Theatre at the University of Chichester.

Annabelle Thacker, who achieved an A* in Fine Art, As in English Literature, Textile Design and Photography. Annabelle has secured a place at the University for the Creative Arts to study Fashion.

Jacob Ferris, who achieved A*s in Computer Science and Maths and a B in Religion and Philosophy. Jacob will be taking up a place at Exeter to study Computer Science.

Tabitha Hall-Parker, who achieved an A* in Maths and As in Further Maths and Religion and Philosophy. Tabitha will be studying Maths at the University of Birmingham.

Maisie Clark, who achieved an A* in Geography and As in Maths and Physics. Maisie has secured a place at the University of Bath to study Physics.

Keerthi Sathananthan, who achieved As in Biology, Chemistry and Maths.

Marta O'Sullivan, who achieved As in Maths, Physics and Religion and Philosophy. Marta will be reading Physics at the University of Lancaster.

Hazel Fox, who achieved As in English Literature, Music and Psychology.

Amelia Field, who achieved As in History, Politics and Sociology. Amelia will be going on to the University of Exeter to study Politics.

Alongside these impressive university destinations, the school's Head Boy **Sam Rump** is set to join the Royal Navy in January 2023.

GCSE results

Three quarters of students achieved a grade 4 or above in both English and Maths and 55% achieved grade 5 or above in both subjects. The College's top performers were:

Ruby Lowsley who achieved ten Grade 9s and one Grade 8

Emily Kayworth who achieved nine Grade 9s and one Grade 8

Rosie Waterhouse who achieved six Grade 9s and three Grade 8s

Jasmine Stride who achieved four Grade 9s and five Grade 8s

Jack Johnson who achieved five Grade 9s, four Grade 8s, one Grade 7 and a distinction double star in hospitality and catering

Henry Loukes who achieved two Grade 9s, seven Grade 8s, and three Grade 7s

Tom Dallinger-Jones who achieved two Grade 9s, six Grade 8s and three Grade 7s

We hope everyone has had a wonderful summer and has been able to enjoy all that Easebourne Park has to offer, especially the added convenience of the temporary portaloo. Easebourne Parish Council plans to install a permanent loo facility next year.

Picnic in the Park success

2022's Picnic in the Park took place on Saturday 3rd September and was another successful free community event for the village. We were treated to live music from Baby Eleanor and Yukon Bass, teas and coffees by the Church, delicious cakes and bakes from Pinders Patisserie, ice-creams from Deluca's, Face painting by the Guides, our Friends of Easebourne Parish, the school PTA, fundraising by the Parish Council and the Scouts.

The weather held out and several hundred parishioners enjoyed a relaxing afternoon. A big thank you to everyone who joined us. Onto planning now for 2023!



EASEBOURNE
Parish Council

New Speedwatch Group

A new Easebourne Community Speedwatch group has been established in the village and they are looking for volunteers to help increase awareness of speed limits and make our village safer.

easebournespeedwatch@gmail.com

Visit our website to keep up to date on Easebourne news and events.

Janet Pinder, Environment & Communications, EPC



Parish Clerk: Sharon Hurr, parishclerk@easebourne.org
Tel: 07342 166188 Parish website: www.easebourne.org

MERRITT'S *of* **MIDHURST**
FUNERAL SERVICE LTD.

Small, Independent bespoke Funeral Directors Thoughtful, Gentle and Professional

- Funerals tailored to suit every family's requirements
 - Various vehicle options available
 - 24 hour service

01730 816245 - 07704 530921

Enquiries@merrittsofmidhurst.co.uk

What's On Locally

Midhurst Monthly Market

Midhurst's monthly farmers and artisan market returns on Saturday 1st October in both the beautiful Old Library building and the historic Market Square, both located in the Old Town. Find the market, sponsored by Midhurst Town Council, on the first Saturday of every month from 9am until 2pm.

The Midhurst Society

You are invited to the next talk at the South Downs Memorial Hall GU29 9DH, on **Thursday 20 October at 7.30pm**. Professor Dawn Adés will talk about the artist and Midhurst resident Adrian Hill. He was a war artist working in the trenches of WWI. Later when he was a patient at King Edward VII Sanatorium he worked with other TB patients to introduce art as a method of recovery. The Midhurst Society meets ten times a year for interesting talks in the Memorial Hall on the third Thursday of the month, and you can find this year's programme on our website: midhurstsociety.org.uk. There is time at each meeting to socialise with a glass of wine. Entrance is free for members and £3 for visitors. If you decide to join the Midhurst Society on the night, your entrance fee will be deducted.



Follow us on Facebook and Instagram



Petworth House and Park

Saturday 22 October – Sunday 30 October, 10am-4pm. Free event, normal admission applies (free for National Trust members)

This half term, families can explore the Pleasure Garden and have fun spotting the pumpkins hidden across the grounds while strolling through crunchy leaves. Then, search out the seasonal colours and different leaf shapes at Petworth that are marked on the colour catcher chart. Collect what you find and help create deer-shaped wild art installations by attaching your leafy collections to the animal models. Find out more at

www.nationaltrust.org.uk/petworth-house-and-park

Arts Society Midhurst—Lecture Tuesday 5 October

Prof Marie Conte-Helm will talk about 'Sunken Treasures from the East: Tales of Chinese Shipwreck - Porcelain'. At the Methodist Church Hall, North Street, Midhurst. Tea & coffee served from 10.00am. Lecture starts 10.45am promptly. Guests welcome, fee £7.00.'

What's On Locally (cont'd)

Friday October 14th at 7.30

Petworth Area Churches Together (PACT) welcomes for our Autumn Lecture the founder and trustee of *Sanctuary in Chichester*, Roger Pask. People from Ukraine, Afghanistan and elsewhere are arriving in our area in great need. *Sanctuary in Chichester* is committed to welcoming them and helping them to survive before supporting them to integrate, heal and thrive. **Do join us at St. Mary's Church Petworth GU28 0AD.** Free entry—wine and canapés afterwards. Details from 01798 342151 and www.petworthareachurchestogether.com

Midhurst U3A—Tuesday October 18th at 2.30pm at the Methodist Church Hall

Talk by Alan Jones - 'Look into my Eyes' - The History and Mystery of Hypnosis

Doors open at 2.00pm, when refreshments will be served. The talk will start at 2.30pm. It is not necessary to book - just come along. £2 entry fee for Midhurst u3a members, £3 for visitors.

For further information about Midhurst U3A please visit:

www.midhurstu3a.org.uk

General Knowledge Quiz Answers

1. William Wordsworth 2. River Thames 3. Portsmouth 4. Jodie Cromer and Sandra Oh 5. Fosse Way 6. Trinity House 7. A beard 8. Photography 9. Andy Capp 10. The taking of a wicket in an over where no runs are scored. 11. Turner 12. Red 13. The King and I 14. c) wedge 15. Dambusters 16. Google 17. A6 18. Hummingbird 19. Rome 20. Beano

Easebourne Roofing & Construction

**Family-run business with
over 40 years experience**

**Pitched and flat roofs
Guttering and repairs**

Craig Charlton

T: 01730 622911

M: 07775 674173

P&P DECORATORS

**OVER 25 YEARS EXPERIENCE
IN ALL TYPES OF
PAINTING AND DECORATING**

**Friendly professional service
Excellent references
Very competitive prices
Free estimates and advice**

DAVID
01730 812186
07751 248593

CARLOS
01730 813813
07971 170233



*Fresh
Milk
Sold
Here*



Fresh milk is being sold from Buddington Farm along Hollist Lane. Our milk vending machine sells fresh, gently pasteurised, and non-homogenised whole milk - straight from the cow that very morning. Also, home-grown potatoes and local free-range eggs. Bring your own containers or buy one of our 1-litre reusable glass bottles. Open 24/7.

FIND US: Buddington Farm GU29 0QP

EMAIL US: alfierenwick@hotmail.co.uk

CALL US: 07500 666672 or 07999 921348

MORE INFO: www.buddington.co.uk

W. Bryder & Sons

est. 1863

5TH GENERATION, LOCAL FAMILY RUN INDEPENDENT FUNERAL DIRECTORS

24 Hours Service Private Chapel of Rest
Monumental Stones supplied Pre-Paid Funeral Plans available
Grave Maintenance service

The Gables, Tillington, GU28 9AB
Tel: 01798 342174 Fax: 01798 342224
Email: wbryderandsons@hotmail.co.uk



Roger Poat & Partners

Funeral Directors &
Monumental Masonry Consultants



Duck Lane **Midhurst** GU29 9DE



01730 812094 (24 Hours)

Michael Miller
& Partners Ltd

■ Pre-need Funeral Plans ■ Private Chapel ■

email: info@rogerpoat.co.uk

KerryType

PRINT, DESIGN & COPY CENTRE

WE ARE NOW OPEN

MON-FRI 9am to 5pm

FOR ALL YOUR PRINTING,
COPYING - Black & Colour, Plans

A2-A0 Posters, Banners
Correx, Foamex & Acrylic Signs

The Wharf, Midhurst, GU29 9PX

Tel: 01730 814441

E: sales@kerrytype.com

www.kerrytype.com Free Customer Parking

This space is available.
To advertise your business
in United email
easebourne.united@gmail.com
or phone the editors 01730 816542.



Please support
our advertisers
and tell them
you saw their ad
here.

EASEBOURNE VILLAGE STORE & POST OFFICE

- Friendly management
- Meat pies, sausage rolls, etc
- Good selection of wine
- Groceries • Pay Point

Opening hours—shop and PO:

Mon—Sat 8.00am—7.00pm

Sunday 8.00am—2.00pm

Tel: 858130

RYARSH CARS

- Good quality used cars at really great prices
 - All cars mechanically checked and tested
 - Full warranty on all cars
 - Excellent personal 'no-nonsense' service
- Browse our online database of cars or
visit our showroom on the A286 in
Easebourne***

Dodsley Lane Easebourne MIDHURST
GU29 9BB Tel: 01730 813790

sales@ryarshcars.co.uk
www.ryarshcars.co.uk



BESPOKE CARPENTRY & JOINERY

FITTED OR FREESTANDING CABINETS, FURNITURE,
WARDROBES, BOOKCASES, HOME OFFICES,
SHELVING & DRAWERS

RENOVATION & STORAGE SOLUTIONS

CALL ED FOR A FREE QUOTE OR DESIGN
CONSULTATION

 [stanton_and_willis](https://www.instagram.com/stanton_and_willis)

 [Stanton & Willis](https://www.facebook.com/stanton.and.willis)

 edywillis@hotmail.com

 07775 764354

LOCAL BUSINESS - REFERENCES AVAILABLE



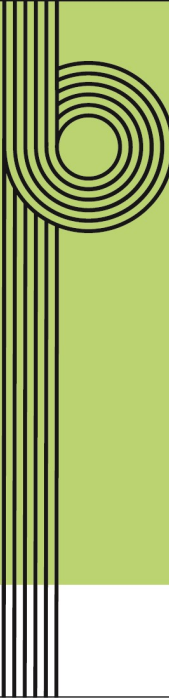
JE

**Bespoke Curtains, Blinds
& Soft Furnishings**

Friendly & Professional
Independent Business
Hand made in Petworth

jem@josephineellen.co.uk
07837479209
www.josephineellen.co.uk

JOSEPHINE ELLEN INTERIORS



Perfect Motion Physio.

- » **PMP 'on demand' from 5-45mins - £18/month.**
Pilates, conditioning, stretching and educational classes.
Sign up for yourself or gift someone a subscription.
- » **Specialist physiotherapy** for aches, pains,
sports injuries and general body MOTs.
- » **Women's health physio** for all pelvic related issues
including pre/post natal physio and exercise rehab,
menopause-related care.
- » **Physio-Pilates** - small and large class options, 1:1's.

Appointments at our Midhurst treatment rooms | 07471 733558
perfectmotionphysio.com

G W LUFF

Garden Services

Lawn Mowing

Hedge Cutting

Borders Weeded

**Call Gary on
01730 812507
or 07789 060497**

Jeremy Yeo

Plumbing and Heating Services

All aspects of plumbing and heating,
from a dripping tap to a complete
bathroom. Heating systems installed
and maintained. Fully insured,
conscientious service. Please call
01730 821217 or 07903 113856
plumbing@jeremyyeo.co.uk



Proclean Cleaning Services Ltd

**Carpets & upholstery
professionally cleaned**

Daily office/commercial cleaning

**We now provide a full
pest control service**

01243 536375

**Email: info@proclean.co.uk
www.proclean.co.uk**

SMART CARS (OF GRAFFHAM)

PRIVATE HIRE / TAXI SERVICE

**Executive Saloon & 6-Seater Cars
Chauffeur Service**

**Professional, Personal & Reliable
Accounts & Corporate Business Welcome
Airport, Docks & London Runs
Same Day Courier Parcel Service**

'Anytime, any place, anywhere'

FOR QUOTES & BOOKINGS

PLEASE PHONE DOMINIC

0800 4488030 / 07823 559099

smartcars@tiscali.co.uk



ANGUS STUDD
Countryside Services Ltd



Mole Catching "No Mole, No Fee"
Hornets – Wasps

**Mole
Catching:
traditional,
effective
trapping
methods.**

Mobile: 07828 134086

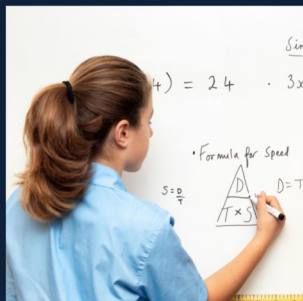


**THE BRITISH MOLE
CATCHERS REGISTER**
SUPPORTING TRADITIONAL EXPERTISE AND SKILLS

**Including
Agriculture,
Equine &
Small
Holdings**

"...this is a school that really does empower"

Tatler Schools Guide 2022



Dorset House School

Preparing children for the future - from Reception to Year 8
Independent prep school in the heart of the South Downs National Park
Daily minibuss from Easebourne

www.dorsethouseschool.com - 01798 831456

The Manor - Bury - Pulborough - West Sussex - RH20 1PB





Live-in care available in a week

Choose Promedica24 for peace of mind. www.promedica24.co.uk/westsussex

Call Chris White-Smith on **01243 282 826** for a **FREE** care assessment

Inspected and rated

Good



PROMEDICA24
Live-in companionship & care

Emailers:
they're effective
and cost-effective.
Find out how you could
make them work for your business.
#talktoHOOLI about
emailer templates and training.

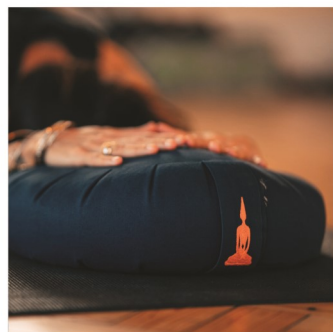
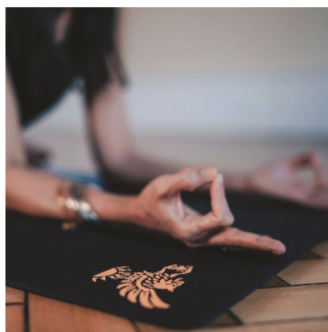


Get in touch with Julia and Rachel.

01730 816484 | hello@hooli.co.uk | hooli.co.uk | 

Nº1 West Street, Midhurst, West Sussex GU29 9NF

HOOLI.
Design | Marketing | Words | Web



COWDRAY WELLBEING

Wellbeing is an important part of the Estate's ethos. Cowdray Hall and Therapy Rooms provide a focal point for self-development, a place where you can come to step aside from the challenges of daily life. Cowdray Hall offers a broad variety of emotional and spiritual workshops, retreats, events and weekly classes.

The tranquil Therapy Rooms sit alongside the Hall and are used by a range of practitioners creating a centre of dedicated therapies including osteopathy, nutrition and acupuncture.

t: 01730 812423

Cowdray Hall Email: hall@cowdray.co.uk Therapy Rooms Email: therapy-rooms@cowdray.co.uk

www.cowdray.co.uk/wellbeing



Everington Physiotherapy
Margaret Everington, MCSP
meverington11@gmail.com
Chartered Physiotherapist
01730 821006

CARYL
MOBILE HAIRDRESSER

For a friendly professional
hairdresser with over 25 years
experience to visit you in the
comfort of your own home -
Phone Caryl
01730 817564 or 07773 473619



**Please contact us for a free
Sales or Lettings valuation**

Tudor View, North Street, Midhurst, GU29 9DJ
Sales: 01730 817370 Lettings: 01730 817376
Email: midhurst@henryadams.co.uk
Website: www.henryadams.co.uk

CARPET & RUG DRY CLEANING
UPHOLSTERY & CURTAIN CLEANING
STAIN PROTECTION

CALL: 01730 814 965

www.magnadrysouthern.co.uk



MAGNA DRY SOUTHERN

Free Estimates ~ Fully Insured



LOGS



**2-yrs seasoned
hardwood cut and
split to order**

Established 1992

**Call for current prices -
Free local delivery
Rob Boddington
01730 815302 or 07787 565544**

ULTRA CLEAN

Local Domestic Cleaner
Hard Working and Reliable
References Available
Hours to Suit
Reasonable Rates
01730 812507
07776 100300

EMERGENCIES Police Ambulance Fire 999

Electricity	0800 0727282	Gas	0800 111999
Southern Water	0330 303 0368	Police (non emergency)	101
MIDHURST FOODBANK	07826 397732	MIDHURST ANGELS	07538 839703
Riverbank Medical Centre	812121	Out of Hours NHS	111
Woodcroft Dental Clinic	812053	St Oswald Dental Surgery	812022
Newspaper delivery (Dummers)	813348	Red Cross Petworth	0800 028 0831
Community Hospital	819100	St Richards Hospital, Chichester	01243 788122
Royal Surrey Hospital	01483 571122	Social Services Chichester	01243
District Councillor Mr Francis Hobbs fhobbs@chichester.gov.uk	07968 027833	MH Pharmacy Midhurst Pharmacy	813255 813231
Easebourne Village Stores	858130	Cowdray Shop & Café	815152
Midhurst Town Council	816953	Grange Centre	0333 005 0398

RecyclingSite, Bepton Road—Opening hours from October—Thurs to Monday 9.00am—4.00pm,
closed Tuesday & Wednesday. See <http://www.recycleforwestsussex.org/recycling-sites/midhurst>

EASEBOURNE PARISH COUNCIL

Mike Noble, Chair
Clerk—Sharon Hurr

Tel: 07342 166188
parishclerk@easebourne.org

Stagecoach Buses	0345 1210190	Midhurst Yellow Bus	07879 556568
National Rail Enquiries	03457 484950	Tandem Bus	0300 030 3962

VILLAGE ORGANISATIONS

Garden & Allotment Society John Humphris, chairman	810052	Midhurst & Easebourne Youth Football Club	816415
1st Easebourne Scout Group	Sarah Jordan sarahjordan@hotmail.co.uk		
Rainbows, Brownies, Guides	Enquiries to www.girlguiding.org/interested OR 0800 1695901		

SCHOOLS

Easebourne C of E Primary School Caroline Hulbert, Head teacher	813266	Early Days Nursery Annie Beadle	815046
Conifers School Miss Emma Fownes, Head teacher	813243	Midhurst Rother College	812451

*All telephone numbers are STD code 01730 unless otherwise stated. Please inform
the editors of errors or omissions – easebourne.united@gmail.com*

Printed by KerryType Midhurst, Tel 814441 www.kerrytype.com



Irresistible Membership Offer

Become a Spread Eagle Spa Member before 30th November 2022 and we'll give you £100 of Historic Sussex Hotels gift vouchers plus 50% off your joining fee*



Call now to arrange a tour!

*Terms & conditions apply. Joining fee offer price £100 (normally £200 for single membership). Offer applies to £112 per month direct debit subscription (minimum 12-month contract). You will receive two £50 Historic Sussex Hotels gift vouchers to spend at Baillifscourt, Ockenden Manor or The Spread Eagle within 12 months of starting your membership.



Spa: 01730 819829 Hotel: 01730 816911

The Spread Eagle Spa, Midhurst, West Sussex GU29 9NH
spa@spreadeagle-midhurst.com | hshotels.co.uk



Part of the Historic
Sussex Hotels group

Offer valid until 30th November 2022. Not available in conjunction with any other offer. Membership is subject to availability. Please note you may be placed onto a waiting list should spa membership be at capacity and we'll let you know as soon as you are able to start your membership.