

Vol 20 No.10 May 2022

united **EASEBOURNE**



Easebourne village and St Mary's Church magazine

What's in the May 2022 issue

Letter from Derek	1
Church pages and diary	2—5
Sue Absolom's poem	7
Handbell Ringing	7
Midhurst Rother College—Music at MRC	8
Listed Building—Park House	10
Friends of Easebourne Parish.....	11
Sussex Wildlife Trust—Raven.....	13
Queen's Jubilee Celebrations.....	14
Carol's Quiz	15
Easebourne Primary School	17
Diana Stringer Obituary.....	21
Snippets from a Gardener's Diary	22
Garden Society news.....	23
What's On	24
Caroline Pede Happy Memories.....	27
Parish Council	29
From the Cowdray Estate—Wildlife on the Estate.....	31
200 Club	32
Foodbank.....	34
Local information	inside back cover

The deadline for the June issue of United is Monday 16 May. We always welcome interesting articles and attractive images from our readers.

Send to: easebourne.united@gmail.com or Tel 816542

Many thanks to Clive Blott of the Midhurst Camera Club
for the photo of bluebells near Benbow Pond.



Letter from the Vicar

Dear Friends

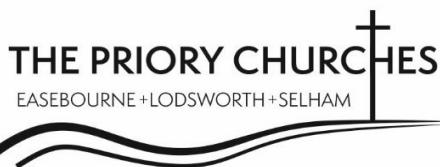
As you will remember, one of the biggest highlights for me last year was seeing an Avocet for the first time. It seems that 'these firsts' are now limitless. This spring already, I have welcomed my first Siskins to Northgate. One afternoon I sat and watched: Greenfinches, Bull Finches, Gold Finches, Chaffinches and Siskins all on or around my feeder. And now, without further ado, I announce that as of April 2022, I now have my first Brambling at Northgate; how wonderful is that!

Spring is wonderful. Each year flowers and wildlife burst onto the world around us. Birdsong returns and colour fills our gardens and hedgerows. These are the things that help me to get through my week, especially as the news has been so difficult with Covid, war and spiralling price rises.

Each Sunday morning, whether at Selham or Lodsworth, before the service begins, I always stand outside to listen and look at the world around. These are precious moments. The stillness of West Sussex gently punctured by birdsong and the occasional aircraft returning from exotic climes.



Siskin



It makes me wonder; do we all manage to find these moments? What would yours be? As I grow in years, my spirituality becomes more and more connected to the world around me. Nature reminds us of the natural balance of life. Birds and insects live on a yearly cycling that is about reproduction; building a nest, feeding the young until ready to leave, and finding food each day. These are the simple things of life, where enough is enough for life. I envy this sometimes. We worry about mortgages, holidays, rising prices and retirement; all very important to us I'm sure, but do we create too much pressure on ourselves?

So, what will be next? I would love to find a Hedgehog living in my garden or as I did once year, see badgers tumbling on my lawn. As we busy ourselves, nature goes on all around us. This spring and summer allow nature to bring you some peace. As I write Bluebells are beginning to flower. Soon it will be Cowslips and Wild Garlic. Enjoy!!

Derek Welsman

www.thepriorychurches.co.uk

The Benefice of ST. MARY'S PARISH CHURCH, EASEBOURNE
with St Peter's Lodsworth and St James Selham

SERVICES AT ST MARY'S

First Sunday	10.30am Family Eucharist	<i>Coffee is served in Church</i>
Other Sundays	10.30am Holy Eucharist	<i>after the 10.30am service</i>
Wednesdays	10.00am Holy Eucharist	<i>on most Sundays.</i>

Morning Prayer: 8.30am most weekday mornings except Wednesday & Friday

SERVICES AT ST PETER'S LODSWORTH

Second Sundays 9.00am Family Service
Fourth Sundays 9.00am Sung Communion
First Sundays 6.00pm Evensong

SERVICES AT ST JAMES SELHAM

1st & 3rd Sundays
8.30am Holy Communion

Vicar: Rev Canon Derek Welsman, Northgate, Dodsley Grove 812655
 Easebourne GU29 9BE Email: derek.welsman@outlook.com

Churchwarden: Mrs Alison Davis, Merrydown, Bepton 816642
 Midhurst GU29 0LZ. Email: alitdavis@gmail.com

Churchwarden: Mr Roger Sked, 3 Fox Rd, Easebourne GU29 9BH
 Email: rsked@btinternet.com 814948

Parish Administrator/PCC Secretary:
 Mrs Liz Bounton, 1 Bourne Way, Midhurst GU29 9HZ
 E-mail: stmaryseasebourne@hotmail.co.uk 816405

PCC Treasurer & Gift Aid Secretary
 Mr Eric Bounton, 1 Bourne Way, Midhurst GU29 9HZ
 E-mail: e.bounton@btinternet.com 816405

Organist & Choirmistress
 Mrs Mary Knight 812783
 Practice on Fridays 6.00pm

200 Club Margaret & Mike Wharton 810474
 E-mail: mike@mwassociates.eu.com

Women's Fellowship
 Mrs Ann Harfield 813810

Bellringers Joanne Blackwell 01798 860883
 (ring on alternate Thursdays from 7.30 – 9.00pm)

Social Committee
 Mrs Jan Harling 01798 342233

Editor of United Advertising Tina Litchfield, 7 St John's Close, Midhurst GU29 9QB
 Gavin Litchfield
 Email: easebourne.united@gmail.com 816542

To subscribe to United phone Ann Harfield 813810
or email—annharfield23@gmail.com

Visit the benefice website: www.thepriorychurches.co.uk

CHURCH DIARY FOR MAY 2022

Sunday 1	3rd Sunday of Easter		
	8.30am	St James	Holy Communion
	10.30am	St Mary's	Family Service
	6.00pm	St Peter's	Evensong
Tuesday 3	7.00pm	St Mary's	Beetle Drive
Wednesday 4	10.00am	St Mary's	Holy Communion
Sunday 8	4th Sunday of Easter		
	9.00am	St Peter's	Holy Communion
	10.30am	St Mary's	Holy Communion
Thursday 14	2.00pm	St Mary's	Marriage Blessing
Sunday 15	5th Sunday of Easter		
	8.30am	St James	Holy Communion
	10.30am	St Mary's	Holy Communion
	6.00pm	St Peter's	Celtic Service
Wednesday 18	10.00am	St Mary's	Holy Communion
	7.00pm	St Peter's	PCC Meeting
Thursday 19	7.00pm	St Mary's	Wedding Rehearsal
Saturday 21	1.30pm	St Mary's	Wedding
Sunday 22	6th Sunday of Easter		
	9.00am	St Peter's	Holy Communion
	10.30am	St Mary's	Holy Communion
	12.30pm	St Mary's	Baptism
Wed 25	3.30pm	St Mary's	Deanery Synod meeting
	7.00pm	St Mary's	APCM
Thursday 26	Ascension Day		
	10.00am	St Mary's	Holy Communion
	7.00pm	St Mary's	Wedding Rehearsal
Saturday 28	12.30pm	St Mary's	Wedding

CHURCH DIARY Cont'd

Sunday 29	7th Sunday of Easter	
	10.30am	United Service at Easebourne Primary School
JUNE		
Wed 1	10.00am	St Mary's Holy Communion
Sunday 5	Pentecost	
	8.30am	St James Holy Communion
	10.30am	St Mary's Family Service
	6.00pm	St Peter's Evensong

Women's Fellowship

Thank you to those who supported the Coffee Morning. £111.00 was raised for the Church Spire Fund.

On Tuesday 3rd May we are having a Beetle Drive with invited guests. Members are requested to arrive by 6.30pm for a 7.00pm start.

Ann Harfield, Tel 813810

Afternoon Tea - Wednesday, 11th May at 3.00pm in church

The Social Gang look forward to seeing you all again. If you would like a lift, please contact Hilary (01730 813923), Jan (01798 342233), or Sue (01730 812105). Take care during the coming weeks and with all best wishes.



Midhurst & Easebourne Mothers Union

The Midhurst & Easebourne Mothers Union are hosting the Chichester & District M.U. Eucharist on Thursday 16th June at 7.00pm in Midhurst Parish Church. Everyone is welcome.

Date	Reading	Gospel	Reader	Intercessor
1 May Easter 2		John 21: 1—19		
8 May Easter 3	Acts 9: 36—end	John 10: 22—30	John Backshall	Colin Datchler
15 May Easter 4	Acts 11: 1—18	John 13: 31—35	Ann Harfield	Martin Dexter
22 May Easter 5	Acts 16: 9—15	John 5: 1—9	Veronica Jull	Wendy Trafford
29 May Sunday after ascension			Colin Datchler	

St Mary's 'Yardies'

(Churchyard Maintenance Group)

Join us for our Spring session of garden maintenance in the churchyard, on **Saturday 21st May 2022 from 9am to 11.30am.**

Please add your name to the list at the back of church by Sunday 15th May.

For further details please call Martin Dexter on 07752 001316 or e-mail mdexter123@btinternet.com. Bring small hand tools and gloves and a garden waste bag (bos-bag or similar).

Bacon Butties and hot drinks will be served at about 10.15am!

Thank you *Martin*



“What on Earth is God Doing?” is the intriguing title of our Spring Lecture Friday May 6th at 7.30 at St. Mary's Church, Petworth GU28 0AD. Eddie Arthur MTh, PhD will speak. He is a Board Member of Global Connections, Wycliffe Bible Translator for over 30 years will speak. He now researches, writes and talks about the future of mission.

Entry is free and the talk is followed by wine and canapés.

Information from Geraldgreshamcooke@gmail.com



JE

**Bespoke Curtains, Blinds
& Soft Furnishings**

Friendly & Professional
Independent Business
Hand made in Petworth

jem@josephineellen.co.uk
07837479209
www.josephineellen.co.uk

JOSEPHINE ELLEN INTERIORS



Live-in care available in a week

Choose Promedica24 for peace of mind. www.promedica24.co.uk/westsussex

Call Chris White-Smith on **01243 282 826** for a **FREE** care assessment

Inspected and rated

Good



PROMEDICA24
Live-in companionship & care

Poet's Corner by Sue Absolom

Friendship

First friendships are often made
From your early school days.
Some will stand the test of time
Others will be lost along the way.

Many new friends will be found
As you travel along life's path.
Some will mean more than others
Making you cry or making you laugh.

A friend knows when you need to talk
And senses when you need to be alone,
So may give you some breathing space
But will always be at the end of the phone.

As the years pass slowly by
Friends can become so much more.
They will share your heartbreak and losses
Giving comfort when you're feeling raw.

Companionship, joy and laughter -
So necessary to us at any age
To smooth out the wrinkles of life
And help through any difficult stage.

As the decades pass by
And our twilight years draw near
They can bring with them frailty
And illnesses for those so dear.

Sometimes there is one friend
Who from the very start
Of your meeting them
Finds a special place in your heart.

None of us ever know
What the future will hold
So treasure the friends you love
They are more precious than gold.

Handbell Ringing

The U3A Handbell Ringing Group is planning to resume meetings on the second and fourth Mondays of the month from 4.30—6.00pm in Midhurst.

We would warmly welcome new members to come and join us in this interesting and enjoyable way of making music. Some knowledge of reading music is useful but not essential.

For further details please contact Geraldine Thompson, group leader, on 01730 815186.

Music at MRC

by Madeleine Hathaway

March has been an amazingly musical month at Midhurst Rother College with rehearsals, performances and enrichments of all kinds very much on the menu.

With a set of gamelans on loan from West Sussex Music and training by Inspireworks, students from Years 7 to 9 explored this wonderful traditional Indonesian music ensemble of percussion instruments. To take full advantage of having such a wonderful resource on site, a group of eager musicians from the Rother Valley Primary Schools spent a morning at the College learning how to play the instruments, and a staff group took part in a fun enrichment session.

Students from Years 3, 4 and 5 from Rother Valley Primaries came together for the All Sing events in the MRC theatre. Each fun morning of learning new and interactive songs was attended by over 150 students and led by Katie Stevens from Easebourne Primary. They listened carefully to sing back phrases to learn a repertoire of new songs. Some songs were brought to life with energising actions and others with the use of Makaton signs to enhance the meaning of the words. Year 5 also mastered a two-part song and a 3-part round! It was fantastic to bring so many children together to sing in unison again.

After a break of two years, the Rother Valley Arts Festival returned, with schools

from across the Rother Valley taking part in this wonderful event for young dancers. Schools create their pieces during after school clubs, joined together at Midhurst Rother College, and under the expert eye of Julia Edwards from Northchapel, the dancers rehearsed and then performed on stage to a full house of 300 family and friends. Funds raised from ticket sales then provide enrichment dance events for those involved.

Later 45 GCSE music students went to London Festival Hall to take part in the London Philharmonic Orchestra's BrightSparks programme. Guided by presenter Rachel Leach, they explored a wide range of music, analysing musical elements along the way, with tips and hints to practise students' listening skills. All these skills will play an important part in their GCSE and future studies.

The musical month rounded off with the ever amazing MRC Spring Concert. Playing to a packed house, over 100 students, plus several members of MRC staff, performed a wide variety of dance, music and drama. The evening was a fundraiser for the Ukraine raising £580. The concert opened with the orchestra's performance of the Ukrainian national anthem and a major highlight of the concert was the orchestra's performance of Mussorgsky's

Pictures Of the Exhibition and its final movement *The Great Gate of Kiev*. Other highlights included Will West’s saxophone

solo of *Brazileira* by Daruis Milhaud and the GCSE dance students duet *Give and Take*.

The College now looks forward to taking the Orchestra, Choir and Performing Arts students to Cornwall on a tour in July, where they will perform at venues such as the world famous outdoor Minnack Theatre and Truro Cathedral.



Left: Playing the gamelan
Below: Teacher Katie Stevens leads Rother Valley primary school pupils in song.



Listed Buildings in Easebourne—Park House

Listing NGR: SU89 996 22972

House. Early 19th century. Stuccoed front on stone plinth with rusticated quoins. Wide eaves bracket cornice. Hopped slate roof. Glazing bars intact. Doorway with flat hood on brackets. Rear wing of coursed rubble Two storeys. Four windows.



Photo taken by John Harrison in early 1990's. The house has changed very little in 30 years.

Former residents of Park House by Chris Deadman

The 'Misses' Winter are first noted as being resident at Park House in the 1899 edition of Kelly's Directory, and also appear in the 1905 edition. They were first listed in the 1890 edition but with no reference to their abode. The 'Misses' were Hester Sophia Winter (born 1842) and Elizabeth Amelia Winter (born 1851), the daughters of Thomas Winter, a farmer who was born in Pulborough in 1810. Thomas and his wife Elizabeth were resident in Easebourne when Hester was born. Thomas was noted as a Farmer in the 1851 Post Office Directory where there were only two private listings and fourteen 'Traders'. The family were residing in 'Upper Street' in 1861 when Thomas recorded his occupation in the census as 'Farmer of 150 Acres Employing ... Labourers & 3 Boys'. Thomas farmed in Easebourne until his death in 1879. The burial ceremony was conducted by the Rector of Lynch, Rev. Robert C. Bull, (who was residing at Vansell's Cottage) on 14 October. Following her father's death, Hester became Head of the Household living with her sister Elizabeth, and employed a Cook and a Housemaid. Hester described her

occupation in the 1881 Census as an 'Annuitant' (a person who receives the benefit of an annuity). The sisters never married and 'Lived on Own Means' and continued to employ two domestic servants. Hester died in September 1909 and Elizabeth was the main beneficiary of her will. Her second beneficiary was William W. G. Sadler with whom Elizabeth was living in Wimbledon as a 'Boarder' in the 1911 Census.

Francis Alexander Waddilove Buller made Park House his home in 1922 when he retired from the Navy. Francis was born in Plymouth in 1880 into a naval family.

Francis was commissioned into the Royal Navy and the 1901 Census records his occupation as 'Lieutenant' and being 'Royal Navy at Sea and In Ports Abroad'. He served in the First World War and was awarded the Distinguished Service Order in 1917. Two years later a Court Martial proved a negligence charge against him. The London Gazette dated 1 August 1922 recorded that Captain Francis Buller DSO had been placed on the Retired List 'at his own request'. The London Gazette on 7 June 1929 records that he was promoted to Rear Admiral. He joined the Home Guard during the Second World War but resigned due to illness and died on 14 July 1943.

Friends of Easebourne Parish (FrEP)

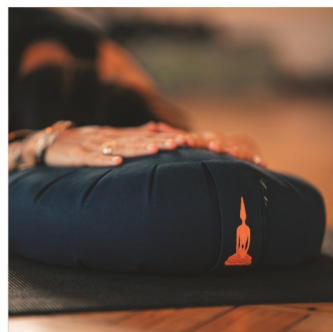
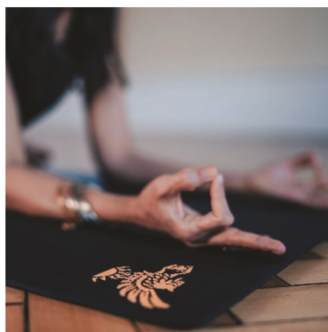
The work FrEP volunteers have been undertaking in the cemetery on Glaziers Lane over the past month is now almost complete. It is planned to return to the cemetery during the year to maintain the hedges and keep the brambles under control. For our next project we will be moving to Easebourne Park to remove the brambles that are rapidly taking over the northern perimeter hedgerow.

The large number of daffodils that were planted in various locations around Easebourne Park late last year are now producing a wonderful display and the intention is to repeat the planting next autumn adding to the 'host of golden daffodils'!

Also, volunteers from St Mary's joined with a team from FrEP to trim the area in the western churchyard dedicated to wildlife. This area is strimmed twice a year, at the start and end of the growing season, to encourage growth of natural flora and fauna, and children from the primary school conduct species surveys there throughout the year. The area is an important initiative which is part of the Priory Churches' eco church project.

FrEP members regularly litter pick throughout the parish to help improve the overall visual and welcoming aspects of our surroundings. If you would like to help make a difference, please contact our secretary via email **FRPESec@btinternet.com** or by calling **07803933694**.

Frank Davies, Chairman



COWDRAY WELLBEING

Wellbeing is an important part of the Estate's ethos. Cowdray Hall and Therapy Rooms provide a focal point for self-development, a place where you can come to step aside from the challenges of daily life. Cowdray Hall offers a broad variety of emotional and spiritual workshops, retreats, events and weekly classes.

The tranquil Therapy Rooms sit alongside the Hall and are used by a range of practitioners creating a centre of dedicated therapies including osteopathy, nutrition and acupuncture.

t: 01730 812423

Cowdray Hall Email: hall@cowdray.co.uk Therapy Rooms Email: therapy-rooms@cowdray.co.uk

www.cowdray.co.uk/wellbeing

Raven

by Michael Blencowe,

Learning and Engagement Officer, Sussex Wildlife Trust



Sussex
Wildlife Trust

May 14th 1264. The aftermath of the battle. Two thousand corpses lie strewn on the slopes and riverbanks around Lewes. Some view this as a victory; for others this is defeat. But for a large, black bird who has calmly watched the bloodshed from the side-lines, this scene of slaughter is an all-you-can-eat buffet. Democracy never tasted so good.

Smart birds, Ravens. Way before 1264 they'd realised they needn't waste their energy killing to eat when other less intelligent species can do the dirty work for them. For centuries Ravens exploited man's enthusiasm for resolving quarrels with clubs and swords. Ravenous Ravens dined out at all the finest battlefields, burial grounds, gibbets and gallows.

Hanging around with corpses would get anyone a bad reputation but the Raven's took on mythological proportions. Across the northern hemisphere the bird became respected and revered by many cultures as an omen of death, denizen of the afterlife, messenger of defeat. This sinister CV secured them a plethora of portentous

appear-ances in everything from the Old Testament to Game of Thrones. The sight of a Raven struck fear in the heart of man who would dare not harm it. Today Ravens still occur in our folklore as the earthbound spirit of King Arthur, and at the Tower of London the birds are entrusted with the fate of the kingdom.

Yet aside from all the make-believe malevolent accolades bestowed on the Raven, it truly is magnificent to watch. As befits Britain's wickedest bird, the Raven certainly dresses the part in a costume of sleek, glossy black feathers, shaggy 'beard' and stout dagger beak. It commands the sky; wheeling on wide wings and uttering its guttural 'cronk cronk' call. Sometimes their behaviour is incongruous with their evil image. To see Ravens rolling and tumbling through the air during their joyous display flight is like catching the grim reaper doing the hokey-cokey.

When not busy instilling fear in the population, Ravens performed an important clean-up job ridding Britain's towns of rotting rubbish and the bird was

protected by royal decree. But in the 17th century people's perceptions changed and for centuries the birds were persecuted. Ravens, and the old beliefs they represented, were exorcised from England. By 1895 they had vanished from Sussex.



But informed, tolerant attitudes have recently allowed Ravens to return. They mostly breed on our chalk cliffs and quarries but can be seen flying over our towns and cities. In our comfortable world of surround sound and selfies there is something reassuringly sinister about watching a Raven circling overhead; a spectral souvenir of our brutal, primitive past. Sussex will never again be the site of a bloody revolutionary battle. But there's no harm in a few Ravens hanging around. Just in case.

Celebrating the Queen's Platinum Jubilee in June

Midhurst Town Council, Easebourne Parish Council and Cowdray Heritage are joining together this June to celebrate a unique milestone in our history, Her Majesty The Queen's 70th year as our Monarch and Head of the Commonwealth.

Lighting the Beacon

On **Thursday 2nd June** residents are invited to join together to take part in a long and unbroken tradition of lighting a beacon to commemorate this historic occasion. Gather at the top of St Ann's Hill, accessible behind Garton's Café on Market Square, from 9pm onwards and the beacon will be lit at 9.45pm, following cornet player Rhys Parry and Midhurst Community Choir singing a Jubilee piece.



Jubilee Picnic

On **Saturday 4th June**, head towards Cowdray Ruins from 12.00 noon where a celebration of Her Majesty will take place in the form of a Jubilee Picnic. Get settled in front of the main stage and

enjoy an afternoon of music and entertainment. Bring a picnic, or enjoy food and drink from one of the many fantastic suppliers who will be bringing the best of British. There

will be free fairground rides, face painting for the children, and a variety of stalls, tombolas and games from local community groups and charities.

FREE ENTRY FOR ALL

For more information please visit www.midhurst-tc.gov.uk.

? **General Knowledge Quiz**—*Compiled by Carole Sawyer*

1. What does a Bibliophile collect?
2. Cheltenham Green Top, Crimson Globe, and Nutting's Red Globe are all types of which vegetable?
3. Queen Elizabeth II is celebrating her Platinum Jubilee this year; how many years on the throne will she celebrate?
4. The 1960's dispute known as the 'Cod War' took place between which two countries?
5. The River Tamar forms most of the border between which two counties?
6. Emma Radacanu will defend her title at which sporting event in 2022?
7. What method of transportation is Shanks Pony?
8. What name is given to a wine steward or waiter in a restaurant who is a trained and knowledgeable wine professional?
9. Who was the manager that guided the underdog victory of Leicester City in the 2015-2016 English Premier League?
10. 2022 is the year of which animal according to the Chinese Zodiac?
11. What is the most northerly town in the UK?
12. How much is the purchase price of Old Kent Road in the London version of Monopoly?
13. In which year did Channel 4 begin transmission in the UK?
14. How long is a Rugby Union match, excluding stoppage time?
15. Which star sign is Queen Elizabeth II?
16. How many degrees does each numbered section of a dartboard measure?
17. What does the cookery term "Plat du Jour" mean?
18. To which animal does the adjective Vulpine refer?
19. What does UHF stand for when tuning a radio or television?
20. What describes a series of words in quick succession that all start with the same letter or sound?

Answers on page 24

design marketing words web
branding logo design
leaflets brochures adverts
posters banners exhibitions
website design and development
copywriting blog training
marketing strategy
training and consultancy
social media emailers
ecommerce websites
#lovemidhurst
#talktoHOOLI.

Get in touch with Julia and Rachel.

01730 816484 | hello@hooli.co.uk | hooli.co.uk | 

Nº1 West Street, Midhurst, West Sussex GU29 9NF

HOOLI.
Design | Marketing | Words | Web



Perfect Motion Physio.

- » **PMP 'on demand' from 5-45mins - £18/month.**
Pilates, conditioning, stretching and educational classes.
Sign up for yourself or gift someone a subscription.
- » **Specialist physiotherapy** for aches, pains,
sports injuries and general body MOTs.
- » **Women's health physio** for all pelvic related issues
including pre/post natal physio and exercise rehab,
menopause-related care.
- » **Physio-Pilates** - small and large class options, 1:1's.

Appointments at our Midhurst treatment rooms | 07719 917977
perfectmotionphysio.com

News from Easebourne Primary School

I write this as the Easter holiday is coming to an end and thought readers might enjoy some of the highlights from last term.

Last term, there were two events at school to support Ukraine, the money from one going to the local Ukraine Sunflower Trust and the second event supporting the Red Cross Appeal. You may also have noticed the unmistakable blue and yellow flag flying above the school, in support of all of the Ukrainian refugees who are being forced to leave their country, as well as those they are leaving behind. The flag was generously and quickly made for us by a mother, Vicky, who is a textiles teacher.

No One Is Too Small to Make a Difference. We have stopped to think about Greta Thunberg's words this term. One great example was Alisha (Y5) who showed us the crisp packet blanket she had made for the homeless. It was exciting to hear about this environmentally friendly and community-minded project, made out of 75 crisp

packets and two layers of discarded plastic.

There was also enthusiasm amongst the children at the possibility of producing more. At their last Big Sleepout fundraiser, Stonepillow gave each participant one of these for the night and, when I spoke to the charity on the phone, they expressed interest in working with the school to do this again in September. Readers may remember that we have taken part in The Big Sleepout in alternate years in the past, as many of you will know, interested Year 5 and 6 pupils sleeping outside Chichester Cathedral. Who knows whether Alisha will inspire this tradition to continue.

As I say, one of the wonderful things about EPS children is the genuine care and compassion they show towards others and their willingness to get roll up their sleeves and work hard to make a difference. Last term was no exception. Red House's cake sale raised an amazing £105.00 for The British Heart Foundation whilst Blue House's cake competition and cake sale raised £219.55 for Winston's Wish. As a school, we raised £72.00 for Red Nose Day and, as mentioned earlier, our Break the Rules Day raised £373.65 to support the Red Cross in Ukraine.

Later in the term, Mia (Y4H), who struggles with dyslexia, designed an Easter-themed colouring sheet for a fantastic competition to raise money to buy some dyslexia-friendly books for our school library. Mia and our English Lead, Andy Taylor, had a chat about it and Mr Taylor was so impressed with her determination and



independence to raise money for such a good cause that he pledged to match her fundraising from the English budget up to £200! In the end, Mia's colouring competition attracted a huge number of entries and Caroline Hulbert, Mia and I had a difficult time deciding whose were the very best – see Mia pictured with the winners and runners-up. In all, Mia raised £175 and so raised £350 in all. We often talk with the children at Easebourne about being kind and having a No Outsiders approach. Mia's great initiative helped us consider less visible forms of difference that can make individuals feel excluded.



You may also remember that we ran our annual recitation competition back in the autumn. From that, the KS2 runners-up and winners were invited to learn a second poem and enter the national **Poetry By Heart** competition. Nine children took up the challenge and, earlier in the spring term, they had a coaching session with their second poem from one of the judges, Tessa Craddock. Later in the term, they recited their second poem to all three judges and it was wonderful to see how much time and care they had put

into learning their poems. The judges were very impressed - the children had taken on board many of the suggestions from the coaching session and the quality was high. The judges were treated to lovely interpretations of works by poets as diverse as Rudyard Kipling, William Wordsworth, Robert Louis Stevenson and Emily Dickinson. Well done to all nine – Luke, Emmy (pictured) and Nora (Y3), Amelie (Y4D), Alais (Y4H), Nellie and Elizabeth (Y5), and Bea and Elizabeth (Y6). Particular congratulations to Alais (Y4H), Nellie (Y5) and Alisha (Y5) who have been chosen as our three school winners—their two video recordings will now be put forward to the national competition.

Our two Year 4 Badgers classes visited Midhurst Rother College to join in the Rother Valley locality's 'Big Sing'. Our very own Katie Stevens led all the schools in the area in a morning of song, and Makaton! All of our Easebourne children had such a lovely morning, as did the teachers that accompanied them. It was such a proud moment to see four lines of well-dressed and well-behaved Badgers singing their hearts out with such enjoyment and energy. (See MRC article on p. 8.) We also have to mention how very pleased the staff with both classes were, as the children's behaviour was exemplary!

There were other highlights of a sporting nature in the spring term. An incredible performance at MRC's cross country event led to four children from Easebourne qualifying to represent the Central Sussex Area in the Sussex School Games 2022

Cross Country Finals. Our Year 3 and 4 children were also fortunate enough to be invited to attend a cross country event at Conifers School. Next term, we are very excited to be bringing Playtime Leaders back to our playtimes. Thank you and well done to the Year 5 girls (Nellie, Kiara, Alisha, Ella, Scarlett-Lily and Alba) for giving up their lunch times to work towards gaining their Playtime Leader status. This will help children to have a focused activity over break times and as a result help children who 'don't know what to do' to feel more engaged. The girls worked hard to become Playtime Leaders, learning how to set up and deliver a task/activity, improving their communication skills in order to help children in KS1 and other year groups to enjoy their break times.

On a Thursday towards the end of term, 18 bleary-eyed Year 6 children wandered in late in the morning – the cause of their heavy eyelids was that they had been performing with some of last year's Year 6's in Voice in a Million at Wembley Arena the night before, returning to Easebourne at midnight. 5,000 schoolchildren and special guests took part in the 'world's most spectacular school concert'. Now in its 12th year, this unique show brings together schoolchildren from all over the UK, singing as one voice. The message underpinning Voice in a Million, started in 2009, is to raise awareness and bring a voice to the thousands of children in the UK Care System. After weekly practices after school with Katie Stevens, the group, joined by Andy Taylor and parents, travelled to London and the event was a tremendous success.

More locally, our dance club of Y5 and Y6

children performed at the Rother Valley Arts Festival at MRC in a programme which feature a range of other local primary schools. Our dance was to the song 'Rainbow' by Sia which has hopeful lyrics describing how the sun will come out again if we persevere. The children enjoyed performing in the MRC theatre in front of a large audience and the dancers made everyone watching very proud.

Many of you will know that the school has a fantastic ELSA (Emotional Literacy Support Assistant) in Shirley Manning and a second ELSA, Louise Ashcroft, who has just been trained to join her. These two colleagues have weekly sessions with a range of children who, for one reason or another, benefit from work on feelings and emotions. A year ago, Shirley contacted 'Knit-for-Nowt', a charitable service which collects knitted, crocheted, or sewn hand puppets and 'worry monsters', which are used by therapists to help children. Recently, Shirley reached the top of the queue, and was delighted to receive two knitted puppet families, a set of knitted 'professionals', some finger puppets and some worry monsters, knitted by Jenny in Bucks and Monica in Dorset. Thank you, Jenny, Monica and Knit-for-Nowt!

Running up to Easter, Squirrels Class (Year 2) walked to St Mary's Church to visit Derek and talk about signs of Easter in the church. The first thing that the children noticed was that there were no flowers. Derek explained that during Lent the only time there are flowers is on Mothering Sunday. Flowers are then reintroduced on Easter Sunday as 'a burst of colour and happiness'. The most obvious Easter symbol in church is a large sculpture of

The Last Supper. Squirrels were able to identify the scene and talk about it. They had fun discussing which figure could be Judas and why!

Near the end of term, our Year 4 classes pulled off a wonderful production, 'What a Knight!' The children were brilliant, as were the staff behind the scenes, in particular Theresa Daley and Katie Stevens, the two powerhouses behind the show. I was lucky enough to see the dress rehearsal as well as one of the two performances and hugely enjoyed it. I felt that they had excelled themselves and, believe me, I have seen a great number of school productions in my time!

Just before broke for the holiday, it was lovely, as always, to go down to St Mary's for our Easter service and feel that connection with our local church. Our thanks to Derek for welcoming us and leading the service and to Mary (organist) and Rob and Lynn (band) for accompanying our songs. The class crosses were brought up to the altar at the end of the service and these were displayed in St Mary's over the Easter holiday so families and local residents could go and see the creativity that had gone into them.

Right at the end of term, Foxes Class (Year 5) helped Nina (Forestry Lead for the Cowdray Estate) and her team of Clive, Ellie and Geoff to plant nearly 200 trees to infill the significant gaps left by the trees felled because of ash dieback and the damage caused by Storm Eunice. We are so fortunate to have the Cowdray Estate's support - thank you, Nina and your team!

The term finished with a great production from Kenn and Iain from Openbox Theatre. This was generously funded by the PTFA and was enjoyed by all – a wonderful way to finish. Openbox are great at appealing to all ages, including the staff, whilst also getting key messages across to the children. They also major on audience participation, including the staff. In today's performance, Katie Stevens, Andy Taylor, Alex Mockler and I were all targeted!!

With best wishes for the summer from all at Easebourne Primary School.

Johnny Curley



Diana Stringer – 1935-2022

Long standing Easebourne resident Diana Stringer recently passed away peacefully after a short illness. Diana Mary was born to Harold and Dorothy Walters in central Portsmouth on 3rd October 1935. In 1939

with war approaching, the family relocated to the rural peace of Stedham. Diana lived in or was connected to Easebourne for 71 years of her 86 years. She arrived in Cowdray Road from Stedham in 1949. Easebourne social life then was based at the

Easebourne Institute, now Cowdray Hall. She loved to attend the dances there and at one she met and fell in

love with John Stringer. She and John were married at Easebourne church in 1957 and were together for over 58 years. Diana was closely connected with St Mary's. She was a founding member of the altar guild and part of the panel that appointed Derek. Diana worked at Easebourne Primary for many years as a teaching assistant in the reception class. She was a member of the Midhurst Young Wives and she was a long-time supporter of the Save the Children

Fund often cooking for events to raise money.

Diana retired from the school around the same time as John retired from the Greater London Council. In 2007 she

became seriously ill with a rare illness, insulinoma. As she recovered, John's health deteriorated and she looked after him with great devotion until he died in 2015.

Following John's death, she threw herself into the things that gave her great pleasure, reading, watching

Test matches and Wimbledon, and gardening. Then eighteen months ago, she suffered a stroke which was a significant setback to her. However with the help of live-in carers, she achieved her ambition to live as long as she could at Mint Cottage.

She is survived by her children Phil, Gill, Pat and James and her 9 grandchildren and 3 great grandchildren.

Contributed by her son Phil Stringer





Orchids

A regular question I am often asked is, how to keep house plants looking attractive over a long period, particularly with flowering plants, rather than just foliage; and how to have continuous flowering for that same length of time. There is no doubt that orchids are now one of the most popular house plants and, despite needing humid warm conditions, are very popular plants to buy for indoors bringing an exotic touch to the sitting room.

Keeping them looking attractive over a long period needs careful attention to their needs but they are tougher and more tolerant of difficult conditions than most plants. Let us take the most popular orchid for sale at this time, the Phalaenopsis. To grow young plants to flowering size needs the humid warm conditions as mentioned above, but surprisingly a flowering plant as available in most garden centres will stay in good condition for a very long time in the average warm house. A

relative of mine kept her Phalaenopsis on a window sill in a small kitchen that was always hot and steamy, and these were the best orchids I have seen indoors. Unlike most plants, forgetting to water orchids for a day or two is not critical - it is more important to have the right atmosphere. This is difficult to achieve in the average sitting room and those with a conservatory where the orchids can be moved to and sprayed over with warm water for a day or two can make all the difference.

We had a small greenhouse for orchids when I worked at Sutton Place which, when they came into flower, were brought into the house conservatory. We also used them for display as individual plants around the house during visitor open days. Having never worked with orchids before it was very much a learning curve to grow them well, and when one of our many visitor groups arrived one day I was introduced to one of its members, John Blowers. The name seemed familiar and when he mentioned that he was an orchid grower I remembered that his book on orchids was in my bookcase. He told me that many years before he had been a trainee gardener at Sutton Place before

going on to work with orchids, and having looked in our greenhouses suggested that he would like to give some cultivation advice, in the nicest possible way of course.

We arranged for him to visit on the following Saturday and we spent the whole day splitting and

repotting the whole collection, all the while giving interesting asides on various growing techniques. Although we had a number of Phalaenopsis he was very keen that we should extend our cymbidium collection. There are a number of dwarf varieties but the standard large growing varieties also produce large numbers of flower spikes. Our collection once in new compost and grown on for a year began producing many flowers. We had a number of group and individual placements for pot plants around



the house and it was soon obvious that they were the ideal house plant, looking attractive in flower for at least a month and often longer. We would then cut the flower spikes and use those still in good condition for arrangements, with the plants returned to the greenhouse to be fed and watered ready to produce flowers for the following year.

For many years they produced gold medal winning displays at Chelsea and when we finally arranged a visit it was soon obvious why, as the range of glasshouses and standard of cultivation was fantastic to see. Jersey of course is a lovely holiday destination so to visit the nursery while there adds to the enjoyment.

He also suggested I visit the Eric Young Orchid Foundation on the island of Jersey.

John Humphris 810052

11th Annual Plant Sale

on Saturday 21 May

10.00am until 12.00 (or until we sell out)

in front of Easebourne Priory

We will be selling the usual perennials, flower and veg seedlings and plants, houseplants, and sundries. We won't know until the day what shows up, but there are always bargains for everyone, and lots that you can't find in the garden centres. Make a note in your diary!

Easebourne Garden & Allotment Society

Coach Trip to RHS Wisley—Tuesday 7 June There are still places on the coach for this trip to Wisley. Cost if you are a member is only £18—includes entrance and a cream tea in one of their cafés. Cost is £22 for non-members but you can become a member of the Society for the extra £4. Please contact Jackie Haggis on 812230 or email jackieh5@gmail.com

Our **Handbook for 2022** is now available with details of all our talks and events, and the schedule for the August Produce Show. Contact the secretary if you would like to join our friendly local garden society. It costs £4 per person or £6 for two people at the same address.

Phone Tina 816542 or email egas@tinagavin.com

What's On Locally

Community Day Saturday 7 May



Midhurst Rother College
The best in everyone™
Part of United Learning

Something for all the Family!!

Lifestyle, Leisure & Fitness ** Delicious Food and Drink

**** Artisan Goods ** Local Craftspeople ****

Greener Living Alternatives ** Eco-Friendly Goods

Local organisations**

10.00—2.00pm

For more information email: madeline.hathaway@mrc-academy.org or
contact the College Office: 01730 812451

The Midhurst Society

You are invited to the next talk at the South Downs Memorial Hall GU29 9DH, on **Thursday 19 May at 7.30pm**. Mortuary archaeologist Dr Dawn Cansfield will present the fascinating story of 'The Ancient Dead of Sussex (and Beyond)'. She will discuss what prehistoric burial practices can tell us about life and death in the ancient past.



The Midhurst Society meets ten times a year for interesting talks in the Memorial Hall on the third Thursday of the month, and you can find this year's programme on our website: midhurstsociety.org.uk. There is time at each meeting to socialise with a glass of wine. Entrance is free for members and £3 for visitors. If you decide to join the Midhurst Society on the night, your entrance fee will be deducted. (The membership form is on our website.

Follow us on Facebook and Instagram



General Knowledge Quiz Answers

1. Books.
2. Beetroot.
3. 70.
4. The UK and Iceland.
5. Devon and Cornwall.
6. US Open.
7. Walking.
8. Sommelier.
9. Claudio Ranieri.
10. Tiger.
11. Thurso.
12. £60.
13. 1982.
14. 80 minutes.
15. Taurus (born 21 April 1926).
16. 18 degrees (360 degrees divided by 20 = 18 degrees).
17. Dish of the Day.
18. Fox.
19. Ultra High Frequency.
20. Alliteration



Individually crafted, beautiful buildings

Energy efficient extensions,
homes, offices and studios.

Call Dylan and Liza:
01730 815885

Planned, designed and
sustainably built by Artizans.

builtbyartizans.co.uk
#builtbyartizans

"If you're thinking of using them, I'd say 'do it!' They're fun to work with and they do a great job."
Anne Dennig, Botany Bay Conservancy, Sussex



We are offering a free glass of Prosecco with a
main meal from Monday to Thursday

ITALIAN FOOD | 01730 817040 | lapiazzettamidhurst.com
4 West Street, Midhurst, West Sussex GU29 9NQ

The Traveling Tavern - Events Bar



Here at The Tavern, we understand how expensive
and stressful events planning can be!

We are here to help ease some of that pressure.

We offer a fully staffed and licensed
bar, using eco friendly sugar "plastic"
cups, that are fully biodegradable,
for an eco friendly, and easy clean up.

Our fully licensed team can be sized
according to the requirements of the booking.

Tel: 07864 389765 Email: Declan@thetavern.uk Website: www.thetavern.uk



SOUTH DOWNS SOLOISTS

Director GEORGE HAYNES

The Beauty of the Earth

*Beautiful choral music celebrating nature
performed by professional singers
featuring Britten's Five Flower Songs*

SATURDAY 28TH MAY 19.30
ST. JOHN'S CHAPEL, CHICHESTER, PO19 1UR

TICKETS £18

AVAILABLE FROM ndekker@hotmail.co.uk OR ON THE DOOR
INTERVAL DRINKS BY DONATION

*Generously sponsored by the Dekker Trust (Reg. 1185529)
in aid of Stonepillow*



Follow us on
Twitter: @SD_Soloists
Facebook: South Downs Soloists



The South Downs Soloists are eight professional a-capella singers based in Chichester, directed by George Haynes (a lay vicar at the Cathedral). We heard them perform in Petworth last year and it was an truly amazing concert. This programme consists of works both sacred and secular, celebrating the Beauty of the Earth. St John's Chapel just off East Street has beautiful acoustics—the perfect setting for unaccompanied singing. Proceeds of the concert will go to the charity Stonepillow which operates hostels and hubs for homeless people. Please book your tickets soon, as seats are limited in this small chapel.

Happy Days by Caroline Pede

My story starts with me as a little girl eagerly watching my mother Barbara (Mitchell) putting on her new Brown Owl's uniform to meet with the newly formed 1st Easebourne Brownie Pack of which she was the founder Guider. I wished I could have gone with her but I was too young. The following year I was able to join and felt very proud and thrilled as I also could now put on my uniform. I was a Kelpie at Brownies and when enrolled I was given my Promise badge which I polished so hard I could almost see my face in it. Eventually I joined the Guides and became a pack leader and continued to help Mum with her Brownie Pack. After Guides I became a Ranger and, yes, continued as a young leader, but this time with the Guides, as Mum had now opened a Guide company. Soon I became a Guider myself and also took the name Brown Owl but for the 2nd Midhurst Brownie Pack and then the 2nd Easebourne Brownies of which Mum was also was the Founder Guider. I continued working with the Brownies and over the years had lots of fun.

By now I had my own family and they also enjoyed the Scout and Guide Movement, keeping the family tradition going. I also became a leader for the Midhurst Beavers while my son attended. Now I have Grandchildren and they also enjoy being Girl Guides - firstly with the Rainbows, followed by Brownies here in Easebourne.

At this point I had thought my story had ended, but in fact to my surprise and purely by chance it was just beginning once again. I have been introduced to the Trefoil Guild!

We meet in the Scout and Guide Headquarters in Midhurst, have tea together, share hobbies or skills, listen to speakers, or go on outings. But we all have in common the Guide Movement either as a past or present day Guider. So last summer I was enrolled and made my promise like the children do. It felt strange at first, as if I



was being transported back in time. But being surrounded by new and old friends and a beautiful garden belonging to one of our members I will definitely remember it as a very happy day.

Now, within the Guild you are given the opportunity to work

towards a Voyage Award. There are Bronze, Silver and Gold awards so I have decided to take up this challenge and work towards my first award being Bronze. There are five elements to work towards—Service, Myself, Teamwork, Skills, and Explore my world. This award is not gained quickly as it is quite involved but I could see that by proposing the sale of my Greetings Cards as a fundraising effort would contribute nicely towards the Service element.

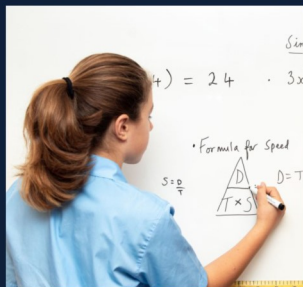
Therefore I would like to thank you all for supporting me and the **Church Spire fund** with your purchasing of my cards. I have enjoyed your feedback, your offer of materials and hope that your friends and families who receive my cards enjoy them too.

I am happy to create individual bespoke cards upon request so do feel free to discuss this with me. **Cards are available for sale after the Sunday morning service.**

Thank you once again and hope you have enjoyed my story.

“...this is a school that really does empower”

Tatler Schools Guide 2022



Dorset House School

Preparing children for the future - from Reception to Year 8
Independent prep school in the heart of the South Downs National Park
Daily minibuss from Easebourne
www.dorsethouseschool.com - 01798 831456
The Manor - Bury - Pulborough - West Sussex - RH20 1PB



Annual Parish Meeting

This year's Annual Parish Meeting, hosted by the Parish Council, will take place on **Wednesday 25th**



EASEBOURNE
Parish Council

May in the main hall at the Primary School from 7.00 until 8.30pm. The Parish Council will share information about their activities over the last year and plans for the coming year. Councillors will also be on hand to discuss any of your questions or concerns and refreshments will be available.

Parish Design Statement Consultation

As you might already know, the public consultation for the Parish Design Statement is now open and will be available for comment until midnight on the 17th May. The document will, when adopted, provide design guidance for development in Easebourne Parish and will supplement the saved policies from the adopted local plan.

The statement can be viewed on the SDNPA website under 'current consultations':

<https://www.southdowns.gov.uk/planning-policy/neighbourhood-planning/village-design->

You can comment by email to planningpolicy@southdowns.gov.uk or by post to South Downs Centre, North Street, Midhurst GU29 9DH where you can also view the document Monday to Friday 9am until 4pm.

Jubilee Weekend events

We continue to work with Midhurst Town Council to finalise details for the Beacon Lighting on the evening of the 2nd June and the Jubilee Picnic on the afternoon of the 4th June. There's already quite a line up of music and entertainment on the stage plus lots of food and drink options! More details to follow but until then, save the dates! (See p. 13.)

Easebourne Park - *Capturing Carbon for the Environment*

As summer approaches and thoughts turn to sun, sand and sangria, it is an opportune time to remind all parishioners who wish to offset their summer travel carbon footprint that Easebourne Parish Council has set up a "Carbon Corner" in Easebourne Park. The Council aims to plant fruit trees each November from contributions to the Carbon Corner fund made over the preceding year. The first seven apple trees were planted by volunteers from Friends of Easebourne Parish last year from a single donation made by a carbon footprint-conscious parishioner. Please consider making a donation the next time you fly. The planting of trees certainly has a positive effect on our world's environmental health. In the first instance, please contact Easebourne Parish Council Clerk on parishclerk@easebourne.org or ring on 07342 166 188. Thank you.

Volunteering

As always, if you have any spare time and would like to get involved in activities within your community, from light gardening, Speedwatch, litter picking or even becoming a Councillor, please get in touch with Sharon, our Parish Clerk.

Mike Noble

Easebourne Roofing & Construction

**Family-run business with
over 40 years experience**

**Pitched and flat roofs
Guttering and repairs**

Craig Charlton

T: 01730 622911

M: 07775 674173

P&P DECORATORS

**OVER 25 YEARS EXPERIENCE
IN ALL TYPES OF
PAINTING AND DECORATING**

**Friendly professional service
Excellent references
Very competitive prices
Free estimates and advice**

DAVID
01730 812186
07751 248593

CARLOS
01730 813813
07971 170233

W. Bryder & Sons

est. 1863

**5TH GENERATION, LOCAL FAMILY RUN
INDEPENDENT FUNERAL DIRECTORS**

24 Hours Service Private Chapel of Rest
Monumental Stones supplied Pre-Paid Funeral Plans available
Grave Maintenance service

The Gables, Tillington, GU28 9AB
Tel: 01798 342174 Fax: 01798 342224
Email: wbryderandsons@hotmail.co.uk



Roger Poat & Partners

**Funeral Directors &
Monumental Masonry Consultants**



Duck Lane Midhurst GU29 9DE



01730 812094 (24 Hours)

**Michael Miller
& Partners Ltd**

■ Pre-need Funeral Plans ■ Private Chapel ■

email: info@rogerpoat.co.uk

Wildlife on the Estate

Jonathan Russell, CEO



Spring is a magical time of year. Now that the weather is warmer and the days are longer, the gardens and woods across the Estate begin to come to life. The cheery yellow faces of daffodils and delicate snowdrops and crocuses emerge at the start of Spring, and then in late April fabulous carpets of bluebells appear in the woods. Walkers can enjoy a myriad of bridleways and footpaths passing through the woods where you can see these deep violet-blue flowers and enjoy their sweet-smelling aroma. The best area on the Estate to experience the bluebells is between Cowdray Golf Course and the John Cowdray Arboretum. This can be

accessed by parking at Benbow Pond and walking west towards the golf course. Gardens across the Estate particularly at Cowdray House and The Walled Garden start to flourish at this time of year with blossom adorning the fruit trees, tulips and clematis flowering followed by alliums, peonies and lupins.

The cows at Moor Farm are released from the barns out into the fields in Spring and lambs can be seen dotted about in the fields. The Parks and Gardens team begin to start mowing as the grass starts to grow but a reduced mowing scheme operates on the verges along the A272.

Blossom at Cowdray House



This allows a natural habitat to thrive where wildflowers and insects can flourish.

Cowdray is home to a wide variety of animals and insects. Deer, badgers and other indigenous creatures thrive in the diverse range habitats across the Estate including forests, fields, meadows and brooks. Many creatures also live in the Estate's woodlands, and these areas are extremely sensitively managed to protect the habitats of a variety of species including badgers, which are a European Protected Species. As such is it against the law to damage or disturb their setts. Badgers tend to burrow only 50 to 60cms under the ground so their setts can be easily damaged by forestry works or the movement of vehicles. Cowdray Foresters go to great lengths to protect their setts setting up exclusion zones around them and often felling trees by hand before winching them away from the protected zone.

Some of the UK's rarest birds and reptiles also live in the mosaic of heath, scrub and woodland that makes up the Commons including the Nightjar and the Dartford warbler as well as the smooth snake, sand lizard, grass snake, adder and natterjack toad. The forestry team works alongside Natural England, local rangers as well as other organisations such as the South Downs National Park, the Sussex Wildlife Trust and the British Trust for Ornithology to preserve these unique natural habitats.

There are also eight sites of nature conservation interest on a local level. In particular, Verdley Wood is a priority butterfly site, and the Estate is working in partnership with the South Downs National Park Authority and Butterfly Conservation to increase the populations of the rare Pearl Bordered Fritillary.

Conservation is key with many different departments across Cowdray working to preserve and look after this beautiful corner of England whatever the season.

FRIENDS OF ST MARY'S 200 CLUB April 2022 draw winners

1st Prize - £100

2nd Prize - £75

2nd Prize - £75

3rd Prize—£50

3rd Prize—£50

3rd Prize—£50

No 8

No 83`

No 214

No 57

No 76

No 266

Simon Hendrie

Hilary Darling

Hilary Craig

Ian Heustice

Chris Fairclough

Roger Sked



If you would like to join the 200 Club please contact:

Mike & Margaret Wharton, tel 810474, email mike@mwassociates.eu.com

Please note, winners will receive monies by bank transfer.

KerryType

PRINT, DESIGN & COPY CENTRE

WE ARE NOW OPEN
MON-FRI 9am to 5pm

FOR ALL YOUR PRINTING,
COPYING - Black & Colour, Plans

A2-A0 Posters, Banners
Correx, Foamex & Acrylic Signs

The Wharf, Midhurst, GU29 9PX

Tel: 01730 814441

E: sales@kerrytype.com

www.kerrytype.com Free Customer Parking

RS Services (Roger Sked)

Need a little job done?

Too small to trouble a large company?

You need a handyman, then. Local.
Friendly. Reasonable prices.

Roger Sked 01730 814948

Mobile 07840 340021

rsked@btinternet.com

EASEBOURNE VILLAGE STORE & POST OFFICE

- Friendly management
- Meat pies, sausage rolls, etc
- Good selection of wine
- Groceries • Pay Point

Opening hours—shop and PO:

Mon—Sat 8.00am—7.00pm

Sunday 8.00am—2.00pm

Tel: 858130

RYARSH CARS

- Good quality used cars at really great prices
 - All cars mechanically checked and tested
 - Full warranty on all cars
 - Excellent personal 'no-nonsense' service
- Browse our online database of cars or
visit our showroom on the A286 in
Easebourne***

Dodsley Lane Easebourne MIDHURST
GU29 9BB Tel: 01730 813790

sales@ryarshcars.co.uk
www.ryarshcars.co.uk



BESPOKE CARPENTRY & JOINERY

FITTED OR FREESTANDING CABINETS, FURNITURE,
WARDROBES, BOOKCASES, HOME OFFICES,
SHELVING & DRAWERS

RENOVATION & STORAGE SOLUTIONS

CALL ED FOR A FREE QUOTE OR DESIGN
CONSULTATION

 stanton_and_willis

 Stanton & Willis

 edywillis@hotmail.com

 07775 764354

LOCAL BUSINESS - REFERENCES AVAILABLE

The Foodbank helps in Easebourne & Midhurst



Just before the Easter holidays Midhurst Foodbank delivered 170 lunch boxes and 170 Easter eggs to children in the area who receive free school meals during the school term. This is a huge operation and totally dependent on the help of you, our volunteers. We are so grateful for the time given to deliver all these to families in Midhurst and the surrounding villages. We had 37 delivery teams (Foodbank volunteers and members of Midhurst and Petworth Rotary Club) as well as volunteers loading the cars with the boxes and Easter eggs. These boxes had been packed by the pupils of Seaford college, who also collected a lot of the food that the boxes contained. This is an incredible act of support and kindness. Colleen Hayes organises this and she hopes that the school can do this again in the

Summer. This is an amazing support.

We have fed 270 individuals since the beginning of 2022. That includes both families and single people. Since the £20.00 reduction in universal credit, the cost of living has risen sharply. It costs more to fuel your car, heat your home and feed your family. We continue to receive a steady flow of requests for help, sadly we are feeding people who have never had to ask for help before.

We continue to be very well supported by the people of Midhurst, without whose donations we could not support those in need.

midhurstcoordinator@chichesterdistrict.foodbank.org.uk

Liz Willing Midhurst Foodbank Coordinator



Fresh milk is being sold from Buddington Farm along Hollist Lane. Our milk vending machine sells fresh, gently pasteurised, and non-homogenised whole milk - straight from the cow that very morning. Also, home-grown potatoes and local free-range eggs. Bring your own containers or buy one of our 1-litre reusable glass bottles. Open 24/7.

FIND US: Buddington Farm GU29 0QP

EMAIL US: alfierenwick@hotmail.co.uk

CALL US: 07500 666672 or 07999 921348

MORE INFO: www.buddington.co.uk

G W LUFF

Garden Services

Lawn Mowing

Hedge Cutting

Borders Weeded

**Call Gary on
01730 812507
or 07789 060497**

Jeremy Yeo

Plumbing and Heating Services

All aspects of plumbing and heating,
from a dripping tap to a complete
bathroom. Heating systems installed
and maintained. Fully insured,
conscientious service. Please call
01730 821217 or 07903 113856
plumbing@jeremyyeo.co.uk



Proclean Cleaning Services Ltd

**Carpets & upholstery
professionally cleaned**

Daily office/commercial cleaning

**We now provide a full
pest control service**

01243 536375

**Email: info@proclean.co.uk
www.proclean.co.uk**

SMART CARS (OF GRAFFHAM)

PRIVATE HIRE / TAXI SERVICE

**Executive Saloon & 6-Seater Cars
Chauffeur Service**

**Professional, Personal & Reliable
Accounts & Corporate Business Welcome
Airport, Docks & London Runs
Same Day Courier Parcel Service**

'Anytime, any place, anywhere'

FOR QUOTES & BOOKINGS

PLEASE PHONE DOMINIC

0800 4488030 / 07823 559099

smartcars@tiscali.co.uk



**ANGUS STUDD
Countryside Services Ltd**



**Mole Catching "No Mole, No Fee"
Hornets – Wasps**

**Mole
Catching:
traditional,
effective
trapping
methods.**

Mobile: 07828 134086



**THE BRITISH MOLE
CATCHERS REGISTER**
SUPPORTING TRADITIONAL EXPERTISE AND SKILLS

**Including
Agriculture,
Equine &
Small
Holdings**



Everington Physiotherapy
Margaret Everington, MCSP

Chartered Physiotherapist
01730 821006



**Please contact us for a free
Sales or Lettings valuation**

Tudor View, North Street, Midhurst, GU29 9DJ

Sales: 01730 817370 Lettings: 01730 817376

Email: midhurst@henryadams.co.uk

Website: www.henryadams.co.uk



LOGS



**2-yrs seasoned
hardwood cut and
split to order**

Established 1992

Call for current prices –

Free local delivery

Rob Boddington

01730 815302 or 07787 565544

CARYL
MOBILE HAIRDRESSER

For a friendly professional
hairdresser with over 25 years
experience to visit you in the
comfort of your own home -

Phone Caryl

01730 817564 or 07773 473619

CARPET & RUG DRY CLEANING
UPHOLSTERY & CURTAIN CLEANING
STAIN PROTECTION

CALL: 01730 814 965

www.magnadrysouthern.co.uk



MAGNA DRY SOUTHERN

Free Estimates ~ Fully Insured

ULTRA CLEAN

Local Domestic Cleaner
Hard Working and Reliable
References Available

Hours to Suit

Reasonable Rates

01730 812507

07776 100300

EMERGENCIES Police Ambulance Fire 999

Electricity	0800 0727282	Gas	0800 111999
Southern Water	0330 303 0368	Police (non emergency)	101
MIDHURST FOODBANK	07826 397732	MIDHURST ANGELS	07538 839703
Riverbank Medical Centre	812121	Out of Hours NHS	111
Woodcroft Dental Clinic	812053	St Oswald Dental Surgery	812022
Newspaper delivery (Dummers)	813348	Red Cross Petworth	0800 028 0831
Community Hospital	819100	St Richards Hospital, Chichester	01243 788122
Royal Surrey Hospital	01483 571122	Social Services Chichester	01243
District Councillor Mr Francis Hobbs fhobbs@chichester.gov.uk	07968 027833	MH Pharmacy Midhurst Pharmacy	813255 813231
Easebourne Village Stores	858130	Cowdray Shop & Café	815152
Midhurst Town Council	816953	Grange Centre	0333 005

RecyclingSite, Bepton Road—Opening hours from April —Thurs to Monday 9.00am—6.00pm,
closed Tuesday & Wednesday. See <http://www.recycleforwestsussex.org/recycling-sites/midhurst>

EASEBOURNE PARISH COUNCIL

Mike Noble, Chair
Clerk—Sharon Hurr

Tel: 07342 166188
parishclerk@easebourne.org

Stagecoach Buses	0345 1210190	Midhurst Yellow Bus	07879 556568
National Rail Enquiries	03457 484950	Tandem Bus	0300 030 3962

VILLAGE ORGANISATIONS

Garden & Allotment Society John Humphris, chairman	810052	Midhurst & Easebourne Youth Football Club	816415
1st Easebourne Scout Group	Sarah Jordan	sarahjordan@hotmail.co.uk	
Rainbows, Brownies, Guides	Enquiries to www.girlguiding.org/interested OR 0800 1695901		

SCHOOLS

Easebourne C of E Primary School Johnny Culley, Head teacher	813266	Early Days Nursery Annie Beadle	815046
Conifers School Miss Emma Fownes, Head teacher	813243	Midhurst Rother College	812451

*All telephone numbers are STD code 01730 unless otherwise stated. Please inform
the editors of errors or omissions – easebourne.united@gmail.com*

Printed by KerryType Midhurst, Tel 814441 www.kerrytype.com

Our local property market is always buzzing...

We're busy providing first class
service throughout the region.



Contact us today if you're thinking of selling

Now is the best time to take your property to market, and if you're considering **buying**
talk to us today as we may already have the home that will **fit you perfectly**

askhenry@henryadams.co.uk or visit: **henryadams.co.uk**

It all points to ► Henry Adams Book your free valuation today

Sales ► Lettings ► Holiday Lets ► Commercial ► New Homes ► Valuations and Surveys ► Land and Planning ► Fine Art Saleroom