

Vol 18 No.9 April 2020

united **EASEBOURNE**



St Mary's Church and Village Magazine

Price 50p



STOP PRESS. Under Church of England guidelines all churches are now closed for public worship until further notice. However, St Mary's will be open each day for private

Since publication all churches are closed until further notice.

Dear Friends

2020 has already proved to be a very challenging year. It began with those awful fires in Australia that destroyed so much human life, wildlife and homes. In our own country we have been battered by storm after storm – the news has been full of awful pictures of lives devastated by flooding and homes destroyed. And now, we find ourselves facing the most difficult situations, a worldwide virus pandemic.

I suspect that most of us will feel anxious about Coronavirus; it has certainly created fear, suspicion and panic across our country. We are in uncharted waters – we look for leadership from our government and advice from those in the know. Ultimately how things will turn out is anyone's guess, but what we do know is that the elderly

and the vulnerable find themselves on the frontline of suffering the most.

As I reflect upon these issues, I am drawn back into the last century; how people coped with war and disease on a much larger scale. Back then people pulled together, drawing on a greater sense of humanity – beyond the individual, to a more 'we are all in this together' approach. For me, these values must still be the best response. In churches we have changed our worship – not using the communal chalice and not sharing the peace physically – so that we too play our part in reducing the spread of this awful outbreak.

The Coronavirus has also coincided with the season of Lent and Easter; a time for the church to reflect and pray.

**VISIT OUR BENEFICE WEBSITE:
www.thepriorychurches.co.uk**

Through our services we pray for the world and those affected by this outbreak. We also make a strong connection between God's earthly appearance in the form of Jesus Christ and our human story. So we connect our suffering with his suffering – his compassion and our need for compassion – his love for God's creation and our love for each other. Jesus' ultimate mission was to bring about God's Kingdom 'on earth as in heaven' - and at the heart of this was a radical call to be more human than we could ever imagine. So as we face these challenges, let us do it together – looking out for each other, protecting the vulnerable and weak – mindful that whether faith is our thing or not, that life is so much better shared with others, in family, community and society.

May I wish you all a blessed Easter.

Derek

From the Registers

Weddings: Steven Watkins & Chloe Dalton; David Attmore & India Culley.

Funerals: Patricia Ricketts; Win Berry.

Date	Readings	Readers	Gospel	Inter-cessors	Welcomers	Offertory Procession
5 April		Drama**		Minister	Janet Bennett Rosemary Nicol	First Sunday
12 April		Alison Davis	Matt 28: 1–10	Minister	Sue Absolom Jill Ward	Hilary & Tony Craig
19 April	Acts 2: 14a & 22–32	Bill Howkins	John 20: 19–end	Wendy Trafford	Alan & Liz Austin	Veronica Jull Michelle Levick
26 April	Acts 2: 14a & 36–41	Johnny Culley	Luke 24: 13–35	Caroline Hutchins	Margaret & Mike Wharton	K Minchin Margaret Pratt

**Easter Breakfast -
Sunday April 12th**

Now cancelled

CHURCH DIARY for April—STOP PRESS
Most of these events are cancelled—please check

Wednesday 1	10.00am	St Mary's	Holy Communion
Thursday 2	11.00	St Mary's	Easter Service
			Easebourne Primary School

Sunday 5 Palm Sunday

8.30am	St James	Holy Communion
10.30am	St Mary's	Family Service
6.00pm	St Peter's	Evensong

Monday 6	3.30pm	St Mary's	Messy Church
	7.30pm	St Mary's	Lent Course
Tuesday 7	7.00pm	Refectory	Women's Fellowship
			Beetle Drive

Wednesday 8	10.00	St Mary's	Holy Communion
	3.00PM	GWR	Afternoon Tea
	7.00pm	St Mary's	Wedding Rehearsal

Thursday 9 Maundy Thursday

7.00pm	Refectory/ St Mary's	Dramatised Eucharist
--------	-------------------------	----------------------

Friday 10 Good Friday

10.30am	St James	Benefice Pilgrimage
2.00pm	St Mary's	Hour at the Cross

Saturday 11	12noon	St Mary's	Wedding
-------------	--------	-----------	---------

Sunday 12 Easter Sunday

8.30am	St James	Holy Communion
8.30am	Refectory	Easter Breakfast
9.45am	St Peter's	Easter Service
11.00am	St Mary's	Easter Service

Wednesday 15 NO HOLY COMMUNION

Thursday 16	7.00pm	St Mary's	Wedding Rehearsal
Saturday 18	1.00pm	St Mary's	Wedding

Sunday 19 2 Sunday of Easter

8.30am	St James	Holy Communion
10.30am	St Mary's	Holy Communion
12.30pm	St Mary's	Baptism

Wednesday 22	10.00am	St Mary's	Holy Communion
--------------	---------	-----------	----------------

CHURCH DIARY (cont'd)

Sunday 26	3 Sunday of Easter		
	9.00am	St Peter's	Holy Communion
	10.30am	St Mary's	Holy Communion
Tuesday 28	10.00am	St Mary's	Toddlers Time
Wednesday 29	10.00am	St Mary's	Holy Communion
Thursday 30	7.00pm	St Mary's	Wedding Rehearsal
Saturday 2	2.00pm	St Mary's	Wedding

MAY

Sunday 3	4 Sunday of Easter		
	8.30am	St James	Holy Communion
	10.30am	St Mary's	Family Service
	6.00pm	St Peter's	Evensong

Coronavirus

With the outbreak of Coronavirus we all find ourselves living in difficult times. The biggest blessing is that local groups and people are now putting in place measures to help those who are elderly and vulnerable. The church has a rich resource of human care and would like to offer itself for support, alongside other groups. So if you know of someone who needs help, and that includes hearing a friendly voice on the end of a phone when people feel lonely, then please make contact with our benefice churches, by either ringing the parish phone 01730 812655, by emailing



stmaryeasebourne@hotmail.com or by looking on our website www.thepriorychurches.co.uk for more information.

Together, we are really together.

Rev Derek Welsman



'Toddlers Too'

Tuesdays at 10.00am

8 and 22 April

Songs and Stories for toddlers
and a cup of tea for mum!



at St Mary's Church Easebourne—For details ring 812655



3.30—6.00pm on Monday 6 April

at St Mary's Church Easebourne

for the parishes of Lodsworth,

Selham and Easebourne

A relaxed and informal church with a warm
welcome for the whole family. Crafts, songs,

drama, food and plenty of opport

to have fun and make a mess!

Now cancelled

More details from Alison Davis—Tel 816642 or Lynne Todd 01798 861399

Afternoon Tea—Wednesday 8th April

You are invited to join us on Wednesday 8th April
for Afternoon Tea in the George West Room at
3.00pm. If transport is a problem, please ring
Hilary on 813923. Please feel free to invite
anyone you know to come along and join us for an
afternoon of tea and chats.



Village Post Office – Opening Delayed!

We were all looking forward to the
reopening of the village Post
Office, originally scheduled very
conveniently to coincide with the
press date of "United".

Unfortunately, due to technical
and organisational problems there
have been frustrating delays and
no-one is now certain of the
opening date.

The delays have been very trying
for the Mahadevan family in the
shop, and have not been helped
by the recent wet weather and the
threat of flooding. Despite the
problems they seem to enjoy
being part of the Easebourne
community.

Vickey and Kirisha came to
England from Sri Lanka in 2000 to

join other members of their family and to seek a better life. They settled in Hounslow where their son, Vikish, was born. Vickey ran a general store in Hounslow while Kirisha worked in a large Crown Post Office in Farringdon, which had 12 counters, so managing one counter in Easebourne should be easy! The busy Farringdon office handled high-value packages for the diamond and jewellery businesses in Hatton Garden and served a very busy commercial area.

The family moved to Easebourne two years ago and soon found themselves at home in a quiet, beautiful and historic area where everyone was welcoming, helpful and friendly. Vikish enjoys attending Easebourne Primary School. Kirisha's delicious cooking has featured at the White Horse.

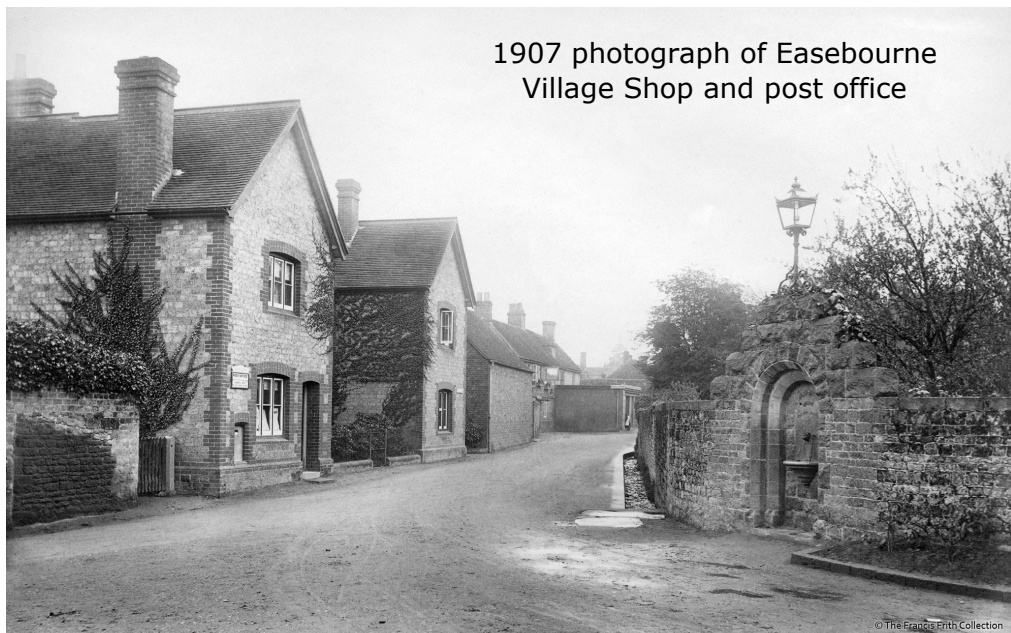
Worshippers at St.Mary's church are grateful for the milk that is supplied by the Village Store each Sunday for after-service coffee

The installation of a Post Office counter has meant some rearrangement of the shop and the loss of some profitable business, so it is important that the opening is not further delayed. Once the Post Office is opened and is once more able to serve as a focus of the community it will need regular customers.

There may be some early restrictions on the services that the new Post Office can offer but new services will be dependent on demand. So, it is up to us, the customers.

Use it or lose it!

Anthony Knight



1907 photograph of Easebourne Village Shop and post office

The Country Mouse Nursery



*Awe and Wonder
Nurture and Kindness
Learning and Fun*

Situated in Midhurst

A calm and nurturing environment, which has recently had an extensive refurbishment. The Country Mouse Nursery provides children with the perfect place to explore, develop and grow in confidence. The Nursery has light, open & free flowing spaces. Outside there is a new covered classroom and huge natural play area.

- Quality, experienced staff
- High quality and affordable childcare for children 3 months- 5 years
- Morning & Afternoon, full & short day sessions available.
- Open 07:30- 18:30 Monday- Friday
- Open 51 weeks a year
- Breakfast & After School Club
- School Holiday Club
- Forest School
- Natural and curiosity focused curriculum
- Government funded entitlement

For further details contact: Amy Penfold, The Country Mouse Nursery, The Masonic Hall, Bepton Road, Midhurst, GU29 9HH

Tel: 01730 813422 / joinus@thecountrymosenursery.co.uk /
www.thecountrymosenursery.co.uk



The natural choice: unique, sustainable and beautiful

using timber, clay, straw bale
and lime plaster for energy
efficient extensions, homes,
offices and studios

Call Dylan or Liza
to find out more:
01730 815885
f @artizansofwood

"If you're thinking of using them, I'd say 'do it'! They're fun to work with and they do a great job."
Anne Dennig, Botany Bay Conservancy, Sussex

*A voucher for United Easebourne
readers only from January 2020.
Booking required - quote "UEPM".

La Piazzetta
Midhurst

VOUCHER

£5 OFF - with a minimum spend of £40*
£10 OFF - with a minimum spend of £80*

ITALIAN FOOD | 01730 817040 | lapiazzettamidhurst.com
4 West Street, Midhurst, West Sussex GU29 9NQ

**NOBODY
READS ADS.**

People read what
interests them.
Sometimes
it's an ad.



If you'd
like help to
**MAKE YOUR
ADVERTS MORE
INTERESTING,**
please get in touch.

Get in touch with Julia and Rachel.
01730 816484 | hello@hooli.co.uk | hooli.co.uk
Nº1 West Street, Midhurst, West Sussex GU29 9NF

HOOOL.
Design | Marketing | Words | Web

Poet's Corner

At the Foot of the Cross by Sue Absolom

When we stand at the foot of the Cross
What is it that we see
An innocent man in torment
There because of you and me.

When we stand at the foot of the Cross
Do we realize what we have done
Because of our Sins and Transgressions
Our God has sacrificed His Son.

When we stand at the foot of the Cross
Do betrayal and treachery come to mind
As we see Our Lords suffering
In order to save Mankind.

When we stand at the foot of the Cross
What is it that we feel
Love, Adoration, Forgiveness
And Reverence, that makes us kneel.

When we stand at the foot of the Cross
Our heads bowed low in prayer
The pain in our hearts all consuming
Our fragile emotions laid bare.

When we stand at the foot of the Cross
Do we see Hope there too
As we await His promised Resurrection
With Faith and Love renewed.

When we stand at the foot of the Cross
We wait in silence and listen
For the cry of the Angels, singing
'Alleluia, Our Lord is Risen'.

Women's Fellowship

Last month we enjoyed the illustrated talk on 'Flowers of Sussex' given by Bruce Middleton. Not only did we see some of the beautiful flowers and plants of our county but Bruce gave an interesting and entertaining commentary on the medicinal uses of some of the flowers, which many years ago were the only remedies available for some illnesses.

Now cancelled

The next meeting will be on Tuesday 7 April at 2.00pm in the George West Room when Pam Stevens will talk about her time living in Petworth House. New members and guests are always welcome.

Orange-tip Butterfly

by Michael Blencowe,

Learning and Engagement Officer, Sussex Wildlife Trust



Sussex
Wildlife Trust

The future's bright

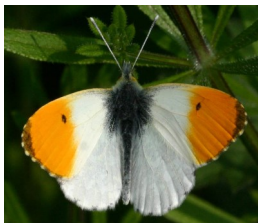
At this time of year I'm often asked 'What's that butterfly with the orange tips on the end of its wings called?' 'Well,' I reply, 'its scientific name is *Anthocharis* meaning 'flower grace'; probably because this beautiful butterfly lends a certain grace to the flowers it frequents. In the 18th century it was 'The Lady of the Woods' – a seductive title well deserved by the best-looking butterfly of the spring. The Germans celebrate its beauty in the name Aurofalter; the sunrise butterfly. The French honour it with the poetic title L'Auroré – the rising sun.' 'So what do the British call it?' 'Well, we call it the Orange-tip – because it has orange tips on the end of its wings.'

Whoever gave this exquisite insect such an unimaginative name should be ashamed. It's more than just a pair of orange tips. Forget your Bluebells and Skylarks, the emergence of the Orange-tip is nature's confirmation that spring has officially sprung.

Only the male Orange-tip has those road-cone orange wing-tips that visually scream 'Look at me! Look at me!' as he cruises the countryside's hedges and edges. You'd think this flamboyant display would land him on the menu for any passing bird – but he has an unsavoury secret. He tastes absolutely disgusting. His orange tips make birds recoil when they recall last eating something that colour. To predators he is a flying

pot of lime pickle; if you've eaten it once, you'll never eat it again.

The grey-tipped females are more secretive. Once mated they search the hedgerows for their food plants – Cuckooflower and Garlic Mustard. They tap-dance on the plants and identify them with taste buds in their feet. Once their six soles are satisfied they lay a single, tiny, orange, rugby-ball shaped egg. The egg's shell emits a pheromone which deters other females from laying here because the cute little caterpillar, which hatches out a week or so later, is a cannibal.



This caterpillar gets to work eating the flower's seed pods, and it eats so many that it starts to look like one (my Mum once warned me a similar

phenomenon would happen with me and Monster Munch crisps). Disguised as its diet, it merrily munches throughout May and the plant toxins it ingests will help to flavour the bitter butterfly it will become. In July, the caterpillar constructs a curious chrysalis, a bizarre bit of angular architecture attached to a stem by a single string. Inside this post-modern pupa the caterpillar melts into a cellular soup. And then the natural world's greatest regeneration takes place. This biological broth builds a butterfly and the April sunshine encourages the Orange-tip to emerge; that simple flash of orange signalling that an even greater regeneration has finally taken place. Winter has turned to spring.

Sussex Wildlife Trust is an independent charity caring for wildlife and habitats throughout Sussex. We rely on the support of our members to help protect our rich natural heritage. Please consider supporting our work. As a member you will be invited to join Michael Blencowe on our regular wildlife walks and also enjoy free events, discounts on wildlife courses, Wildlife magazine and our Sussex guide book, Discovering Wildlife. It's easy to join www.sussexwildlifetrust.org.uk or over the phone on 01273 497532.

If you are just retiring or have already retired, why not join Midhurst U3A? We cater for all interests with a lively variety of groups ranging from creative writing, digital photography, computers and garden visiting to French, Latin, art history, walking, wine tasting and singing. There are more than 40 to choose from and if it isn't there the remedy is easy – just start another.



The next talk at the Methodist church hall is on Tuesday 21st April, when Gillian Halcrow will give a talk entitled 'SOE—Special Operations Executive; Churchill's Secret Army'. From 2.15pm tea, coffee and biscuits are served , and the talk starts at 2.30pm. Make a note in your diary or for more information contact 01730 816459. Everyone is welcome.

Now cancelled

FRIENDS OF ST MARY'S 200 CLUB

Winners in March draw

1st Prize - £100	No 15	Pat Broadbent
2nd Prize - £75	No 53	Linda Joy Jones
2nd Prize - £75	No 76	Chris Fairclough
3rd Prize—£50	No 61	Jane Bricknell
3rd Prize—£50	No 93	Mervyn Evans-Jones
3rd Prize—£50	No 31	Keith Nightingale



If you would like to join the 200 Club please contact:
Mike & Margaret Wharton,
tel 810474, email mike@mwassociates.eu.com

Art at Conifers

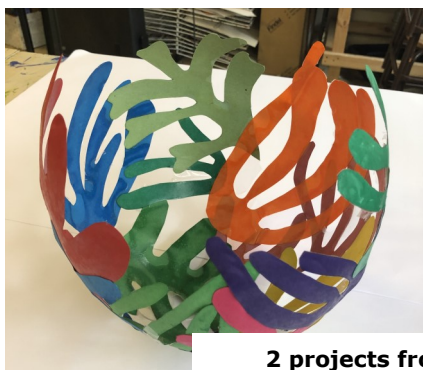
Most schools and teachers are concerned with the development of a child's intellect, particularly within core subjects. But in order to develop the whole child we need a curriculum that challenges students to think, to question, to communicate and to explore their own personal beliefs and values. Art lessons at Conifers provide the perfect platform for children to explore and communicate ideas, meanings and feelings through their work. As a teacher it is my role to provide opportunities for each of my students to do this, considering not just the intellectual, but also the spiritual, moral, social and cultural aspects of the discipline in order to develop the whole child. Spirituality is concerned with encouraging students to ask themselves who they are and where they're going, and to express this through their imaginations. Creativity is the development of the student's 'spirit', their sense of identity, self-worth, meaning and purpose. For some, spirituality is represented through religious experience; for others it may be an emotional response towards or within a piece of art. Art can itself be a direct expression of religious or spiritual



feeling. It is a feeling or a connection, a conversation through a work of imagination, a communication of a moment, or an expression of passion.

Art can help children develop and build confidence, revealing talents for those for whom a curriculum based on numeracy and literacy is too restrictive. Art is associated with encouraging children's creativity, providing the perfect platform to address spiritual, intellectual, moral, social and cultural issues, particularly for younger children who have not yet developed the linguistic skills to communicate their emotions and feelings. At Conifers, foundation subjects such as Art and Design, Music and Sport are of equal importance to core subjects and are firmly embedded throughout our curriculum in order to develop not only the intellect but also to encourage the spiritual, moral, social and cultural development of each and every child.

Sophie Tuhill
Art Teacher



2 projects from the Art Department

Snippets from a Gardener's Diary

by John Humphris



Protecting your Soil

I find it an interesting variation that for many years I have talked about protecting early crops from late frosts and unseasonably cold weather and now finding myself suggesting ways to protect the soil from the constant rain that threatens to wash every bit of nutrient away. (Nitrogen is the first to be lost) Ideally having a plastic tunnel or even one covered in green cladding can make all the difference. For most gardeners this is not something they can afford, so cloches or a small frame that can be moved around the garden to cover crops is an alternative that often works really well. If a programme of sowing and planting can be organized over a period of several weeks the crops that need protection, such as early lettuce can be sown and perhaps thinned out while protected and then moved on to other crops once they are established and growing away.

Two ladies who ran a small commercial operation in a walled garden next to the garden where I was working and supplied a local hotel were very clever at moving crops on. They had a frame close under the south wall where sowings were made of runner and French beans and also leeks. The runner beans were transplanted into rows ready to be staked when ready but crucially had cloches covering the rows. These remained in place until the tendrils were trailing out between the cloches and most frost

danger had gone. This was the stage when the cloches were removed, the stakes put in place and the tendrils wound or tied to show them the way up. The aim was to have beans ready to pick by June 1st with the hotel always eager to see the first of the crop on their dinner tables.

The leeks were also brought on in the frames. The frames were closed at night and on cold days and once of a size to transplant were put out in ground that had been manured the previous year. They liked to have their leeks well and truly in the ground as deep as possible so that only the tops peeped out. With a long growing season in front of them they made superb plants by the autumn and were lifted as required throughout the winter. Strawberries were another of their favourite crops and were grown under cloches right through their season, producing high quality fruit much earlier than in the open.

As you can imagine this is a very labour intensive way of producing crops and is not really commercially viable with most growers these days using plastic tunnels for early crops. Nevertheless on a small scale in garden or allotment, these methods are ideal for the small quantity needed by the average household.

John Humphris, tel 810052

Plant of the Month Now here is something interesting and unusual. Think of a Solomon's Seal and add in arching fresh green leaves and creamy white fluffy scented flowers and you have *Smilacina racemosa*, introduced from America as long ago as 1640. Best in some shade and lovely mixed in with any *Paeonia*'s you have in your garden.



10th Big Plant Sale on 23 May—We are hoping this can go ahead.

Now is a good time to divide up your perennials. If you can spare a few clumps, pot them up in clean, undamaged pots and donate them to the plant sale. If you have seedlings to donate we can let you have cell trays. Just get in touch. At least gardening is still something we can do even if we are shut in.

Tina Litchfield, secretary egas@tinagavin.com 01730 816542

Easebourne Garden & Allotment Society Programme

Wed 15 April. Car sharing visit to Leonardslee Gardens RH13 6PP. **CANCELLED.**

Mon 4 May. Coach trip to Kew Gardens. **CANCELLED.**

Sat 23 May. 10th Annual Plant sale in front of the Priory from 10.00am. **Probably CANCELLED. Please check.**

For the rest of the year's programme and information about these and other events ask for our new 2020 Handbook. We welcome new members and visitors are welcome to our talks (cost £2 for guests) and visits*. It only costs £4 a year to join, or £6 for two at the same address.

Phone Linda Ohara, bookings secretary, on 858023.

From the Stringer Family Archive

Phil Stringer has sent us this photo taken in Easebourne in the early 1940's of his grandfather, Wally Stringer, with two other men just off to join the 8th Army in Egypt for the defence of North Africa. Wally was a sergeant in the Surrey and Sussex Yeomanry; he was a prime mover driver at that time. Phil thinks there was a local battery of this unit which was commanded by Lord Cowdray, who had lost his arm during the withdraw to Dunkirk earlier in the war. Another member of this unit was Bombardier Richard William Charles Foard who died before this photo was taken in June of 1940, and is buried in the Glazier's Lane cemetery.



Back row: Sgt Ben Coates, Sgt N Dabbs, Sgt Wally Stringer

Front: David Stringer (John Stringer's twin brother), Brendan, Barbara, Mrs Dabbs with baby Dabbs, Molly with another Dabbs baby, and John Stringer (Phil's dad). The dog is the Stringers' dog Rex.

(Contact the editors if you can contribute similar old photos.)

Work starts on next stage of development for Easebourne Park

Many of you will have seen that work is now underway on the next phase of the development of Easebourne Park. At time of writing, construction of the wooden shelter is due to complete in early April. Once it's up we'll be adding an extension to the perimeter path around the shelter and installing two more picnic benches. We're also planting a number of very mature trees which will hope will give a little instant shade this summer. Other additions in the coming weeks will include a traditional see-saw, a large community noticeboard, and a BBQ area! We do hope residents will enjoy the new facilities.

All of this has been made possible after our successful bids for funding from Chichester District Council, The Grange Community Association, The National Lottery and the South Downs National Park Community Infrastructure Levy.

The new shelter for the Park



Call-out for Green Volunteers

Midhurst Green Volunteers have been helping to keep growth at bay on High Path and Wheelbarrow Castle, doing a fine job. Feedback from Easebourne residents has been very positive but we need more people to come forward to join this initiative. If you have appreciated the work that's been so far and would like to see other areas of the village maintained to the same high standard, please come and help. The next Easebourne project is the path from Wheelbarrow Castle down Dodsley Lane to Egmont Road, planned to take place on two Saturdays – the 4th and 18th of April from 8.30am for a couple of hours. Please email parishclerk@easebourne.org if you can help.

Dates for your diary

Friday 8 May - VE 75th Anniversary Event at Cowdray Ruins from 1.00 – 4.00pm, preceded by an Ecumenical service.

A family-focused picnic being hosted jointly by Cowdray Heritage Trust, Easebourne Parish Council, Midhurst Town Council and Royal British Legion. More details will be published shortly.

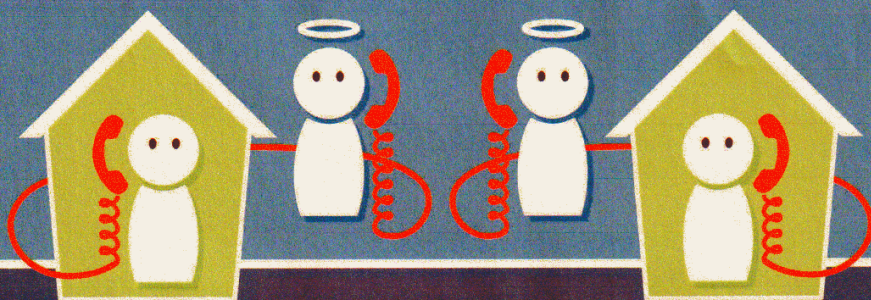
Wednesday 27 May - Annual Village Meeting at 7.30pm in The Refectory behind the Church. All residents are welcome to attend and hear from members of the Parish Council, on our plans and priorities and to ask questions.

TO THE RESIDENTS OF Midhurst, Easebourne and surrounding villages

In this time of Covid-19, uncertainty and change
we want you to know - you are not alone.

Have you been asked to isolate?
Are you elderly?
Are you in a vulnerable group?
Are you exhibiting symptoms of Covid-19?

Midhurst Angels are on hand to support you
through this period of isolation.



Call 07538 839703

We will return your call if we miss you!

Or email us: midhurstangels@outlook.com

We can offer:

★ collection of prescriptions ★ collection and delivery of pre-arranged groceries ★ a friendly voice to chat with on the end of the phone ★

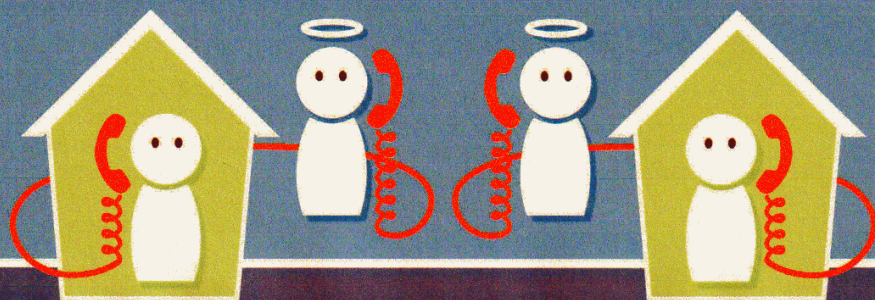
If you have specific requests or need further assistance we may also be able to help or direct you to the relevant support.

Who are Midhurst Angels?

We're local residents - including members of Midhurst Town Council, community groups, local churches and charities.

We're volunteers who want to help our community through what will be a difficult time.

We're on hand to support you through this period of isolation.



Call 07538 839703

We will return your call if we miss you!

Or email us: midhurstangels@outlook.com

FRIENDS OF MIDHURST COMMON

by Andrew Mitchell, Chairman

Jean Hicks has decided to retire from the Committee to give more time to the work of the 'Heath Team' which concentrates on the nature conservation on Midhurst Common. Recently, I interviewed Jean and this is what I learnt.

I arrived in Midhurst in 2002, then to Easebourne in 2008.

Prior to that from Gosport, I had been involved in running charitable events for The Jubilee Training Trust Tall Ships Nelson and Tenacious. I also supported my children's school in Tangmere where I was a founder member of the WI and an enthusiast with Tangmere Garden & Allotment Society.

My first impressions of the area were mainly gained from multiple forays into the surrounding countryside on my Honda 50 motorbike. One day I picked a leaflet up at Iping Common about being a ranger. I had no awareness of conservation up to this point but it sparked my imagination.

As a volunteer Ranger I have walked the Rights of Way to ensure they were maintained and accessible, and also helped set up

the Serpent Trail, the excellent walk from Haslemere to Petersfield, via Petworth.

In 2003 I noticed large amounts of rubbish around Midhurst Common including regular fly-tipping. I started a personal campaign of clearance which has developed over the years. We now have two litter clearance days annually with up to 20 people attending. Thankfully, the need is now much less, hopefully because of the example set. I also joined the Campaign to Save Midhurst Common in 2003 - it now exists as The Friends of



Midhurst Common.

In 2009 Cowdray Estate felled trees and cleared the rhododendron with assistance from Chichester District Council and the Conservation Board to create an area of heathland south of Sunset hill. More recently the South Downs National Park Authority (SDNPA) Ranger Angela Ward led our working party group and created a management plan of actions to perform. More recently I volunteered to lead the 'Heath Team' group, together with Wendy Pegler. Though SDNPA are no longer involved, we carry on with the input of Wendy Pegler, Murray Marr and Graham Ault who have

wide and impressive knowledge of wildlife and its management, plus a team of volunteers. The work of the Heath Team is on-going – our main activities include clearance of self-seeded pine and birch trees, reducing rhododendron along with heather, gorse and bracken management. Heathland is essentially a man-made habitat and work like ours has been going on for centuries albeit originally

for cattle, bedding, thatching, fuel, etc but now being maintained for dog-walkers and those who enjoy the open space and nature.

I have had great fun over the years with my conservation work and continue to do so "even though red tape is tightening". Moral - keep plodding on!

Dates for your diary:

Fri 24 April and Fri 29 May - Work days with the Heath Team 10.00am at Sunset Hill. Contact Jean Hicks: mcvheathteam@yahoo.com

Sat 18 April - Litter Clearance 10.00am Carron Lane Car Park

Sun 31 May - Bog Allotment Open Day 10.00am – 4.00pm.

General enquiries: friendsofmidhurstcommon@yahoo.co.uk

General information: www.friendsofmidhurstcommon.co.uk

STOP PRESS—Check first to see if they're going ahead.

Midhurst and Easebourne Mothers' Union



Our February meeting took the form of a corporate Communion in Midhurst parish church. The Mothers Union has a prayer chain around the world so that every day, all day, members are being prayed for by someone in the MU. Each diocese is given days to take part and Chichester's diocese day was the 26th of February. During the service Jane read prayers for the work of the Mothers' Union and all joined in the MU prayer. After the service coffee and biscuits were served and a bring and buy stall was run. The stall made £87 for the Away From It All holiday caravan in Selsey. Incidentally the caravan is available for hire during term time by anyone looking for a short break, from a night or two, to a whole week. School holidays are booked for families with school age children. The caravan sleeps 6 and the cost is £20 per night for the caravan. For more information speak to Jane.

Sadly it was decided to cancel the March meeting because of the Coronavirus. We had hoped to hear from Karen Hill about the 'Ministry of Cakes' in Worthing Hospital which she was involved in setting up. There are plans to set up a similar ministry in St Richards. If the meeting goes ahead on 22nd April, we will be celebrating St George's Day with a 'Fun Afternoon' and raffle.

From the Editors—Thursday 19 March 2020

Both Tina and I belong to the 70+ age group and are being encouraged to self isolate. We are living in surreal times and each day is bringing changes to the social fabric of the country, especially with news yesterday that schools are closing. We hope and pray that government strategy will allow the country to emerge at the end with the spirit to rebuild a society we are proud to hand on to future generations.

In the meantime on a personal level we can look out for each other, especially by phone or email. We are encouraged by the formation of the Midhurst Angels. (See p. 16-17.) We intend to keep the magazine going, but with many activities cancelled interesting editorial will be thin on the ground. We are going to rely on you the readers to make contributions to our next issues. Please tell us how you and your family have been effected by the lock-down. How are you coping with working from home? What you have been doing to keep busy, to keep fit and healthy, and to help relatives, friends and neighbours who are on their own? How are you keeping your children happy and occupied? Any problems with shopping? Drawings and photographs are always welcome, space permitting.

Please contact us:

**Copy Date for the May issue of 'United' is
Wednesday 15 April. Send to Tina and Gavin
Litchfield at easebourne.united@gmail.com or to
7, St John's Close, Midhurst GU29 9QB. Tel: 816542.
(Let us know if you want to receive a pdf of the magazine.)**

Woolbeding: March News from the National Trust



The spectacularly wet winter has not stopped the mighty work of our Tuesday and Wednesday volunteer groups alongside our Community Service team. The volunteers have braved all weathers to tackle the spread of gorse and opened up new areas to light and vistas across Woolbeding Common. This clearance work prevents gorse scrub from spreading and dominating parts of the heath. Gorse does provide vital nesting sites for birds which favour its dense prickles to protect them from predators. But it can take over and quietly grows and spreads into other areas as new bushes spring up. There is still plenty of gorse left to enjoy the yellow, coconut- scented gorse flowers which brighten everything up.

The volunteers teamed up with the Woolbeding and Petworth gardeners to clear young birch trees and use the cut material to make bean poles to use in the respective gardens. Some birch was left as habitat piles scattered around to benefit lizards,

invertebrates and fungus. Our community service team have been working on clearing rhododendron from Paylins Wood. Then we set them the challenge of planting 10,000 native hedge trees around Woolbeding farmland. They generally come out 4 times a week and you may have seen new hedges appearing in the landscape.

With all the storms it inevitably took its toll on some trees. A lot of time has been spent clearing fallen trees and branches from tracks and roads.

Our Easter event is on Sunday 12th April at Woolbeding Parkland, just off the A272 between Midhurst and Stedham. Drop in anytime between 10.00am and 3.00pm for a nature quiz, egg painting and rolling and have a go at an egg shy. So much fun for friends and family!

Wishing you a happy springtime.

Fiona and the Ranger Team
01730 816638
woolbedingcountryside@nationaltrust.org.uk

? General Knowledge Quiz

1. What are the small indentations on a golf ball called?
2. Who designed the Beatles' 'Sergeant Pepper's Lonely Hearts Club Band' album cover?
3. In which war was Operation Desert Storm?
4. The name of which area in the Pacific means 'many islands'?
5. What is the name given to the process of signaling with two flags?
6. What does a numismatist do?
7. The average human body contains how many pints of blood?
8. In Fahrenheit, at what temperature does water freeze?
9. In which year were Premium Bonds first introduced in Britain?
10. Which London maze was constructed for William and Mary in 1690?
11. Which country produces the most coffee in the world?
12. What is the smallest country in the world?
13. What gives Mead its flavour?
14. Which four presidents' heads are sculpted on Mount Rushmore?
15. How are the sisters Meg, Jo, Beth and Amy described in the title of an 1868 novel?
16. Which tree is being killed off by the fungus *Chalara fraxinea*?
17. Which Scottish singer-songwriter had a 2019 hit with 'Someone You Loved'?
18. Elton John was formerly the Chairman of which English football club?
19. In terms of the senses, what do most birds lack?
20. Bram Stoker's Dracula lived in Transylvania. What modern-day country can Transylvania be found in?

Answers on p. 25

What's On Locally

MIDHURST SOCIETY Thursday 23rd April 7.00pm at South Downs Memorial Hall

This will be our 59th AGM and our 60th anniversary celebrations begin now! There will be formal business and a prize draw and drinks, followed by a presentation from CANINE PARTNERS by Bev Scammel.

Members Free. Visitors £5. Students £1.

www.midhurstsociety.org.uk



The Midhurst Society

Now cancelled

Gilbert & Sullivan

Saturday 25th April 2020
St Mary's Church
Petworth, GU28 OAE
Doors Open 1:00pm
Rehearsal 3:00pm
Informal 4:45pm
Tickets £10 from: 01730 815708
www.fernurstchoralsociety.org.uk

Come & Sing

with Fernhurst Choral Society



Choruses from
Trial by Jury
The Pirates of Penzance
The Gondoliers
Iolanthe
H.M.S. Pinafore

fernhurst
CHORAL SOCIETY
The Chorus We Sing

Now cancelled

**The Community Day at Midhurst Rother College
scheduled for 25 April is now CANCELLED.**

General Knowledge Answers

1. Dimples
2. Peter Blake
3. The Gulf War
4. Polynesia
5. Semaphore
6. Collect coins
7. Nine
8. 32 degrees Fahrenheit
9. 1956
10. Hampton Court
11. Brazil
12. Vatican City
13. Honey
14. George Washington, Abraham Lincoln, Theodore Roosevelt and Thomas Jefferson
15. Little Women
16. Ash Tree
17. Lewis Capaldi
18. Watford
19. Sense of smell
20. Romania



Everington Physiotherapy
Margaret Everington, MCSP

Chartered Physiotherapist
01730 821006

CARYL
MOBILE HAIRDRESSER

For a friendly professional
hairdresser with over 25 years
experience to visit you in the
comfort of your own home -

Phone Caryl

01730 817564 or 07773 473619



**Please contact us for a free
Sales or Lettings valuation**

Tudor View, North Street, Midhurst, GU29 9DJ

Sales: 01730 817370 Lettings: 01730 817376

Email: midhurst@henryadams.co.uk

Website: www.henryadams.co.uk

CARPET & RUG DRY CLEANING
UPHOLSTERY & CURTAIN CLEANING
STAIN PROTECTION

CALL: 01730 814 965

www.magnadrysouthern.co.uk



MAGNA DRY SOUTHERN

Free Estimates ~ Fully Insured



LOGS



2-yrs seasoned
hardwood cut and
split to order

Established 1992

Call for current prices -

Free local delivery

Rob Boddington

01730 815302 or 07787 565544

Adrian's of Midhurst

Professional private hire

Taxi service

07568 330048

adrianglue@hotmail.co.uk

News from Easebourne Primary School

Two recent events have been celebrated at Easebourne CE Primary School. One, Fairtrade Fortnight, encouraged us to reflect on the situation of those often struggling to make enough to support their families whilst the other, World Book Day, encouraged us to celebrate just how rich the world of children's literature is, for children and adults alike.



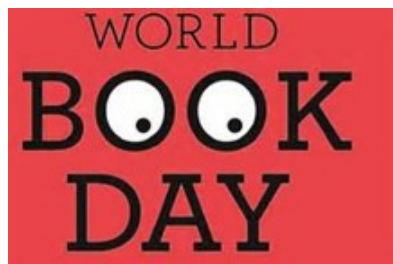
In Fairtrade Fortnight, our houses competed to bring in as many labels from Fairtrade items as they could in an inter-house

competition. It reminded the children just how many products there are where shoppers can be sure that producers are receiving a fair price for their labour. Children brought in everything from the more obvious products such as coffee, tea and biscuits to slightly less obvious ones like flowers and vanilla bean extract! And, of course, there was lots of packaging from chocolate! After school, on the two Wednesdays in the fortnight, children sold Divine chocolate bars sourced through Traidcraft. Trade was brisk and the children sold 148 bars!

On World Book Day, our children were invited to come to school dressed as their favourite book character

and in the afternoon the children had the opportunity to hear staff read from one of their favourite books. We also held a 3D model competition. Children could create a character from their favourite book to hang in the library. There were some stunning entries. I wonder whether readers can identify the examples pictured which include my personal favourite, a character created in 1929 and first appearing in the Belgian right wing newspaper, *Le XXe Siècle* (The 20th Century). There is also a treehouse belonging to a naughty Francesca Simon character and two characters from a much-loved rhyming tale by Julia Donaldson.

Johnny Culley, Headteacher



Children making creations for World Book Day



Horrid Henry's Tree House



TinTin





THE
GOOD
SCHOOLS
GUIDE

DORSET HOUSE SCHOOL



Prep School for girls and boys - Reception to Year 8

Bury - Near Pulborough

Daily minibus from Easebourne

After school care and activities

*To find out more, or to arrange a visit
please call 01798 831456 or visit www.dorsethouseschool.com*

Pupils regularly win scholarships and awards
to senior schools locally and further afield



Shortlisted
Pre-prep/prep school of the year





Where can you spot this ancient plaque in Easebourne?

St Peter's ... WELL

WELL, here we are again and at last making some progress with the repair of our damaged East window, hopefully by the time you read this work will be underway. Diocese permitting we will also be allowed to repair our West door soon – though don't hold your breath!



Deryck Hamon, Lodsworth Church Warden



ANGUS STUDD
Countryside Services Ltd



Tree Surgery – Hedge Cutting – Fencing
Cluster Flies – Hornets – Wasps – Mole Catching

Mole Catching:
traditional,
effective
trapping
methods.

Telephone: **01798 860983**

Mobile: **07828 134086**



THE BRITISH MOLE
CATCHERS REGISTER
SUPPORTING TRADITIONAL EXPERTISE AND SKILLS

Including
Agriculture,
Equine & Small
Holdings

Fully Insured

Free Quotes



BESPOKE CARPENTRY & JOINERY

FITTED OR FREESTANDING CABINETRY, WARDROBES & SHELVING,
HOME RENOVATION & STORAGE SOLUTIONS

CALL FOR A FREE QUOTE or DESIGN CONSULTATION

- LOCAL REFERENCES AVAILABLE -

Ed: 07775 764354 email: edywillis@hotmail.com



Help with smartphones,
tablets, computers, music
& TV systems.



Improve your computer
skills with private tuition.



System tuneups
& upgrades for
your sluggish computer.



Help with broadband
& wifi - upgrade your
connection and get wifi
everywhere you need it.



SWITCHEDON
SUPPORT

*Bespoke Tech Support Solutions for
Small Businesses and Home Users*

**Friendly & Impartial Tech Support
that comes to your home or office.**

Contact Ollie: help@switchedon.support



www.switchedon.support **01428 748 489**



Roger Poat & Partners

Funeral Directors &
Monumental Masonry Consultants



Duck Lane **Midhurst** GU29 9DE



01730 812094 (24 Hours)

Michael Miller
& Partners Ltd

■ Pre-need Funeral Plans ■ Private Chapel ■
email: info@rogerpoat.co.uk

EASEBOURNE VILLAGE STORE

- Friendly management
- Fresh meat • Groceries
- Good selection of wine
- Hot Food • Pay Point

New opening hours:
Mon—Sat 7.00am—7.00pm
Sunday 8.00am—2.00pm

Tel: 858130

S CLUE CARPENTER & JOINER

**Fountain Cottage
Easebourne Midhurst
GU29 0AG
Tel: 01730 815660**

ULTRA CLEAN

**Local Domestic Cleaner
Hard Working and Reliable
References Available
Hours to Suit
Reasonable Rates**

**01730 812507
07776 100300**



Proclean Cleaning Services Ltd

**Carpets & upholstery
professionally cleaned**

Daily office/commercial cleaning

**We now provide a full
pest control service**

01243 536375

**Email: info@proclean.co.uk
www.proclean.co.uk**

**John Doble
BsC Hons BA Hons Mchs
Chiropodist & Podiatrist**

**01730 812312
[johndoblechiro@gmail.com](mailto: johndoblechiro@gmail.com)**

**Office 2, Russell House
Bepton Road Midhurst GU29 9NB
Between the bike shop and the garage**

KerryType

PRINT, DESIGN & COPY CENTRE

**FOR ALL YOUR PRINTING,
COPYING - Black & Colour, Plans
A2-A0 POSTERS, BANNERS
CORREX, FORMEX & ACRYLIC SIGNS
INK CARTRIDGES, STATIONERY ITEMS**

Friendly service~Very competitive prices~Fast turnaround

**The Wharf, Midhurst, GU29 9PX
Tel: 01730 814441
www.kerrytype.com Free Customer Parking**

Clear All Pest Control

**Fully qualified professional
country services**

**Specialising in Wasps, Mice,
Rats, Hornets, Moles, etc.**

Phone Dean on 07768 986338

www.clearallpestcontrol.com



PRISM
WINDOW CLEANING

Traditional Window Cleaners

we clean all kinds of glass including Georgian, sash,
leaded lights, UPVC windows and conservatory roofs

Prompt and friendly service
Established 1990

Call Fran Direct: 07768 986338

www.prismwindowcleaningltd.com

G W LUFF

Garden Services

Lawn Mowing

Hedge Cutting

Borders Weeded

Patios

**Call Gary on
01730 812507
or 07789 060497**

Jeremy Yeo

Plumbing and Heating Services

All aspects of plumbing and heating,
from a dripping tap to a complete
bathroom. Heating systems installed
and maintained. Fully insured,
conscientious service. Please call

01730 821217 or 07903 113856
plumbing@jeremyyeo.co.uk

W. Bryder & Sons

est. 1863

**5TH GENERATION, LOCAL FAMILY RUN
INDEPENDENT FUNERAL DIRECTORS**

24 Hours Service Private Chapel of Rest
Monumental Stones supplied Pre-Paid Funeral Plans available
Grave Maintenance service

The Gables, Tillington, GU28 9AB
Tel: 01798 342174 Fax: 01798 342224
Email: wbryderandsons@hotmail.co.uk

RYARSH CARS

- Good quality used cars at really great prices
 - All cars mechanically checked and tested
 - Full warranty on all cars
 - Excellent personal 'no-nonsense' service
- Browse our online database of cars
or visit our showroom on the A286
in Easebourne***

Dodsley Lane Easebourne MIDHURST GU29 9BB
Tel: 01730 813790

sales@ryarshcars.co.uk
www.ryarshcars.co.uk

P&P

DECORATORS

**OVER 25 YEARS EXPERIENCE
IN ALL TYPES OF
PAINTING AND DECORATING**

Friendly professional service
Excellent references
Very competitive prices
Free estimates and advice

DAVID
01730 812186
07751 248593

CARLOS
01730 813813
07971 170233

ALEXANDRA'S KITCHEN



Café, Kitchen & Catering

We are based at Durleighmarsh Farm
on the Petersfield Road. Come and
have lunch or pop in for coffee and a
slice of one of our delicious cakes at
our Tea Barn café.

We also sell our range of homemade
gourmet frozen ready meals from the
Tea Barn, and we still love to do
outside catering locally.

All our food is handmade, sourcing
much of our produce from local
suppliers and the farm shop next door.
Lots of other places to visit on site -
see our website for more details.

Tel 01730 818286

www.alexandraskitchen.co.uk
alex@alexandraskitchen.co.uk

This space is available.
To advertise your business
in United email
easebourne.united@gmail.com
or phone the editors 01730 816542.



Please support
our advertisers
and tell them
you saw their ad
here.

SMART CARS (OF GRAFFHAM)

PRIVATE HIRE / TAXI SERVICE

Executive Saloon & 6-Seater Cars
Chauffeur Service

Professional, Personal & Reliable
Accounts & Corporate Business Welcome
Airport, Docks & London Runs
Same Day Courier Parcel Service

'Anytime, any place, anywhere'

FOR QUOTES & BOOKINGS

PLEASE PHONE DOMINIC

0800 4488030 / 07823 559099

smartcars@tiscali.co.uk

The Benefice of ST. MARY'S PARISH CHURCH, EASEBOURNE
with St Peter's Lodsworth and St James Selham

SERVICES AT ST MARY'S

First Sunday	10.30am Family Eucharist	<i>Coffee is served in Church</i>
Other Sundays	10.30am Holy Eucharist	<i>after the 10.30am service</i>
Wednesdays	10.00am Holy Eucharist	<i>on most Sundays.</i>
Morning Prayer:	8.30am most weekday mornings except Wednesday & Friday	

SERVICES AT ST PETER'S LODSWORTH

Second Sundays 9.00am Family Service

SERVICES AT ST JAMES SELHAM

1st & 3rd Sundays

Fourth Sundays 9.00am Sung Communion

First Sundays 6.00pm Evensong

8.30am Holy Communion

Vicar: Revd Derek Welsman, Northgate, Dodsley Grove 812655
Easebourne GU29 9BE Email: derekwelsman@btinternet.com

Churchwarden: Mrs Alison Davis, Merrydown, Bepton 816642
Midhurst GU29 0LZ. Email: alitdavis@gmail.com

Churchwarden: Mr Roger Sked, 3 Fox Rd, Easebourne GU29 9BH
Email: rsked@btinternet.com 814948

Parish Administrator/PCC Secretary:
Mrs Liz Bounton, 1 Bourne Way, Midhurst GU29 9HZ
E-mail: stmaryseasebourne@hotmail.co.uk 816405

PCC Treasurer & Gift Aid Secretary
Mr Eric Bounton, 1 Bourne Way, Midhurst GU29 9HZ
E-mail: e.bounton@btinternet.com 816405

Organist & Choirmistress
Mrs Mary Knight 812783
Practice on Fridays 6.00pm

200 Club Margaret & Mike Wharton 810474
E-mail: mike@mwassociates.eu.com

Women's Fellowship
Mrs Ann Harfield 813810

Bellringers Joanne Blackwell 01798 860883
(ring on alternate Thursdays from 7.30 – 9.00pm)

Social Committee
Mrs Jan Harling 01798 342233

Editors of 'United'
Tina & Gavin Litchfield, 7 St John's Close, Midhurst GU29 9QB
Email: easebourne.united@gmail.com 816542

To subscribe to United phone Ann Harfield 813810
or contact the editors by email.

Visit the benefice website: www.thepriorychurches.co.uk

Thanks to Anthony Knight for this photo of the Village Shop.
Unfortunately since publication The Post Office is further delayed.

See p. 7.

EMERGENCIES Police Ambulance Fire 999

Electricity	0800 0727282	Gas	0800 111999
Southern Water	0330 303 0368	Police (non emergency)	101
USEFUL NUMBERS			
Riverbank Medical Centre	812121	Out of Hours NHS	111
Woodcroft Dental Clinic	812053	St Oswald Dental Surgery	812022
Newspaper delivery (Dummers)	813348	Red Cross Petworth	0800 028 0831
Community Hospital	819100	St Richards Hospital, Chichester	01243 788122
Royal Surrey Hospital	01483 571122	Social Services Chichester	01243 752999
District Councillor Mr Francis Hobbs fhobbs@chichester.gov.uk	07968 027833	Chemist MH Pharmacy	813255
Easebourne Village Stores	858130	Cowdray Shop & Café	815152
Midhurst Town Council	816953	Grange Centre	0333 005 0398
RecyclingSite, Bepton Road—Opening hours from 1 April—Thurs to Monday 9.00—18.00, closed Tuesday & Wednesday. See http://www.recycleforwestsussex.org/recycling-sites/midhurst			
EASEBOURNE PARISH COUNCIL			
Mike Noble, Chair Clerk—Sharon Hurr		Tel: 07342 166188 parishclerk@easebourne.org	
TRANSPORT			
Stagecoach Buses	0345 1210190	Midhurst Yellow Bus	07879 556568
National Rail Enquiries	03457 484950	Tandem Bus	813962
VILLAGE ORGANISATIONS			
Garden & Allotment Society www.easebournegardens.org	810052	Midhurst & Easebourne Youth Football Club	816415
1st Easebourne Scout Group	Sarah Jordan sarahjordan@hotmail.co.uk		
Rainbows, Brownies, Guides	Enquiries to www.girlguiding.org/interested OR 0800 1695901		
SCHOOLS			
Easebourne C of E Primary School Johnny Culley, Head teacher 813266		Early Days Nursery Annie Beadle	815046
Conifers School Mrs Emma Smvth. Head teacher 813243		Midhurst Rother College	812451

All telephone numbers are STD code 01730 unless otherwise stated. Please inform the editors of errors or omissions – easebourne.united@gmail.com

Printed by KerryType Midhurst, Tel 814441
<http://www.kerrytype.com>